

parts list



HOMELITE®

VI Super 2

VI Super 2 SL

Chain Saws

HOMELITE **TEXTRON**

Homelite Division of Textron Inc.

VI Super 2, VI Super 2 SL

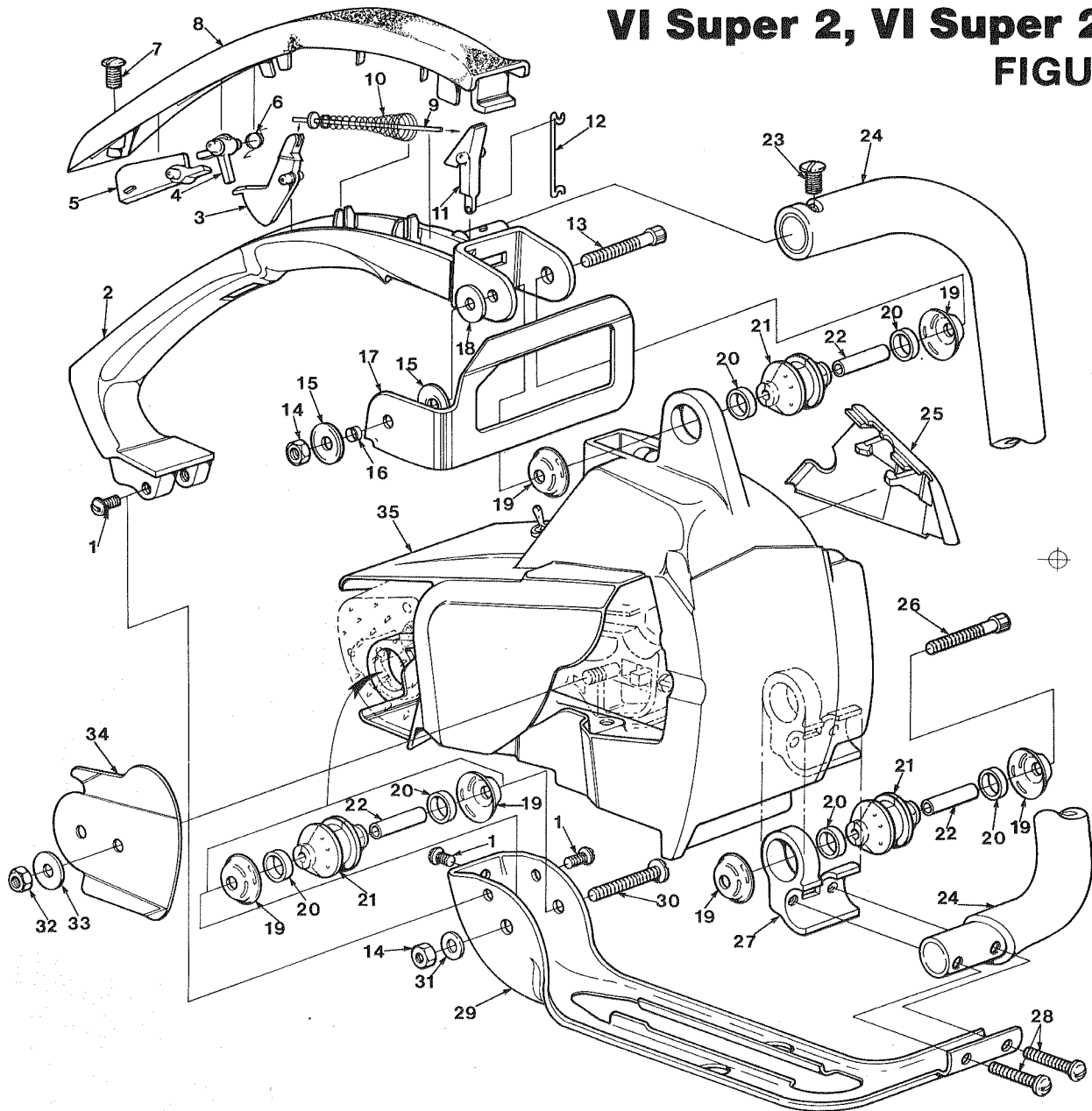
ACCESSORIES

GASKET- Oil pump body	69596
KIT- Spark arrestor (for A-69253-1 Muffler)	A-69586-B
Includes:	
SCREW- Self tapping (#6 x 1/4) (3)	80328
KIT- Hand guard (units without Chain Brake)	A-70796-A
Includes:	
SCREW	82312
SCREW- (10-32 x 5/8)	80572
WASHER- Belleville (2)	70728
SPACER	70748
ROPE- Starter #4 (250 ft.)	68848
SAFE•T•TIP® (Pat. Pending)	A-70776-A
Includes:	
SCREW- (8-32 x .437)	93695
TUBING- Rubber (10 ft.)	70309-99
TUBING- Rubber (10 ft.)	70310-99

TOOLS

PULLER- Magneto rotor	A-24747-A
Includes:	
BOLT- 5/16 - 18 x 1 3/4	80288
NUT- Hex 5/16 - 18 (2)	81196
WRENCH- Hex soc. 5/32 (for 10-24 screw)	22126
WRENCH- Hex soc. 9/64 (for 8-32 screw)	23528
WRENCH- Spanner (Clutch)	A-93791
Includes:	
PIN	23717-A
WRENCH- Flat (for guide bar nut)	24814
DRIVE- Check valve (for HDC-58 Carb.)	24972
PLIERS- Tur-Arc	17198

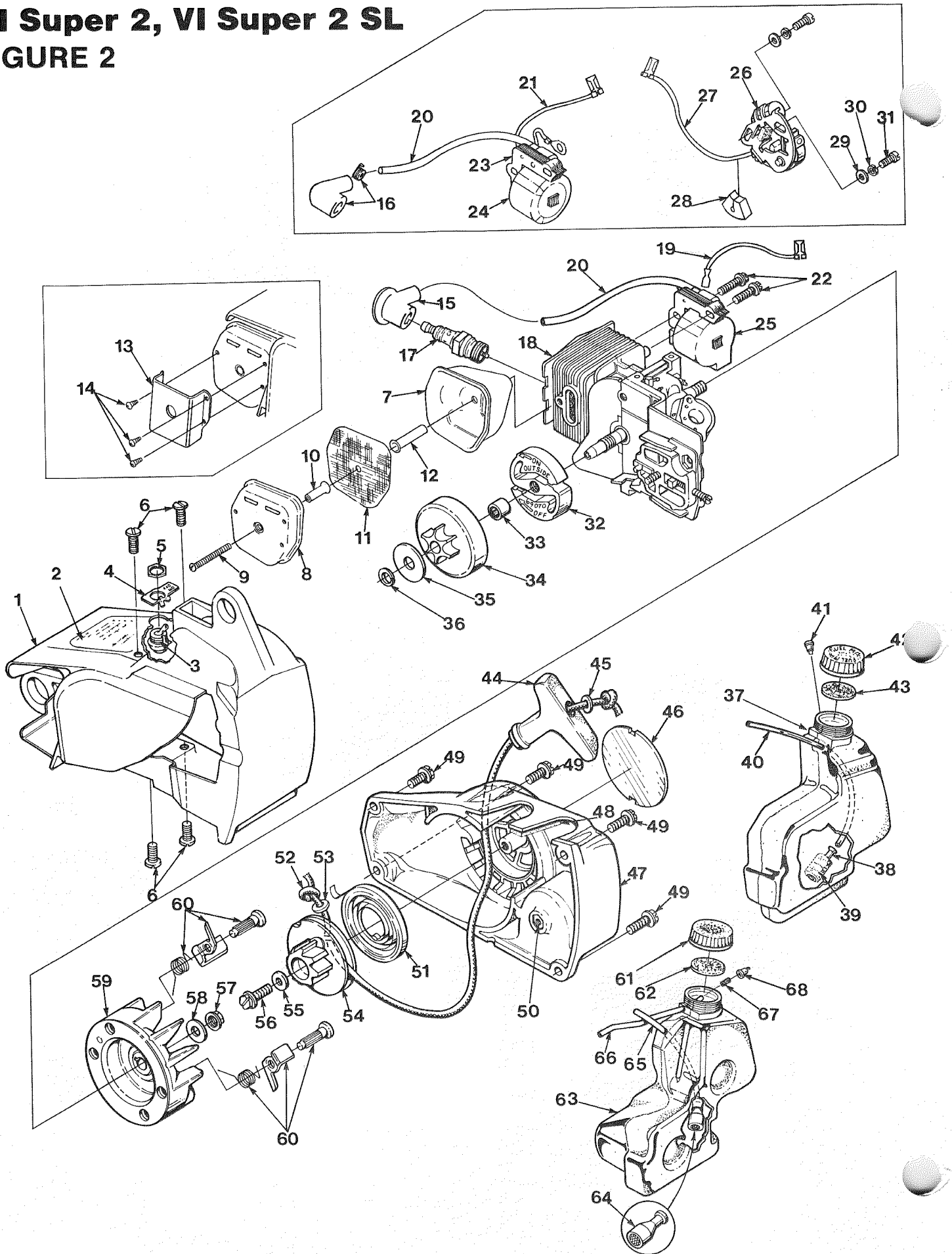
VI Super 2, VI Super 2 SL FIGURE 1



No.	Description	Part No.	Qty.	No.	Description	Part No.	Qty.
1	SCREW- Pan hd. (8-32 x 3/8)	80577-2	3	20	RING- Isolator	70432	6
2	HANDLE- Throttle	70568-2	1	21	ISOLATOR- Vibration	70485-A	3
3	TRIGGER-	70619	1	22	SPACER- Isolator	70433	3
4	STOP- Throttle safety	70593	1	23	SCREW- Pan washer hd (10-32 x 5/8)	82239	1
5	LEVER- Throttle safety	70594	1	24	HANDLE BAR	A-70604	1
6	SPRING- Torsion	70591	1	25	COVER- Air filter	70571	1
7	SCREW- Pan hd. (#10-32 x 5/8)	82239	1	26	SCREW- Cap hex soc. (10-32 x 1 3/4)	82310	1
8	COVER- Handle	70626	1	27	BRACKET- Isolator mtg.	70558-2	1
9	ROD- Throttle	A-70614	1	28	SCREW- Hex hd. (10-32 x 1 3/16)	80841	2
10	SPRING- Throttle rod	69249	1	29	BRACE- Handle	70554-1	1
11	LEVER- Throttle	69107	1	30	SCREW- Pan hd. (10-32 x 1 3/4")	82317	1
12	ROD- Throttle	70612	1	31	WASHER- Flat (10)	84008	1
13	SCREW- Cap hex soc. hd. (10-32 x 2")	†82321	1	32	NUT- Guide bar (1/4-28)	81065-2	1
	SCREW- Cap hex soc. hd. (10-32 x 1 3/4")	‡82310	1	33	WASHER- Flat	69309-1	1
14	NUT- Hex (10-32)	81206	2	34	PLATE- Guide bar	69360	1
15	WASHER- Belleville	†70728	2	35	HOUSING- Engine	A-70662-B	1
16	SPACER- Hand guard	†70748	1		(see fig. 2 for breakdown)		
17	GUARD- Hand	‡70802-1	1				
18	WASHER- Flat	70632	1				
19	WASHER- Isolator	70440-A	6				
					† VI Super 2 only		
					‡ VI Super 2 SL only		

VI Super 2, VI Super 2 SL

FIGURE 2



VI Super 2, VI Super 2 SL

FIGURE 2

No.	Description	Part No.	Qty.	No.	Description	Part No.	Qty.
1	HOUSING- Engine	A-70662-B	1	40	TUBING- Rubber	70310-29	1
	Includes:			41	VALVE- Check (Duckbill)	69451	1
2	PLATE- Instructions	70835	1	42	CAP- Fuel (Red)	A-70894-A	1
3	SWITCH- Stop (grounding)	A-63938	1		Includes:		
	Includes:			43	GASKET- Filler cap (See Note 3)	94838	1
4	PLATE- "ON - OFF"	70834	1	44	GRIP- Starter rope	70211	1
5	NUT- Hex	72084-A1	1	45	WASHER- Flat	84025	1
6	SCREW- Pan hd. (10-24 x 1/2)	82216	4	46	DECAL- (VI SUPER 2)	70900	1
7	MUFFLER	A-94051-A	1		DECAL- (VI SUPER 2SL)	70798	1
	Includes:			47	HOUSING- Rewind starter	A-70663	1
8	CAP- Muffler	93985	1		Includes:		
9	SCREW	82320	1	48	FILTER- Fuel tank valve	69443	2
	SPARK ARRESTOR	A-94139	1	49	SCREW- Hex washer hd.		
	Includes:				(10-32 x 5/8)	80572	4
10	SPACER	93989	1	50	NUT- Center locking hex (#10-32)	81206	1
11	SCREEN- Spark arrestor	D-93991	1	51	SPRING- Rewind	69217	1
12	SPACER	93990	1	52	ROPE- Starter #4, 34" long	A-93874	1
13	KIT- Muffler temperature (VI SUPER 2W)	A-93993	1		Includes:		
	Includes:			53	WASHER- Nylon	93862	1
14	SCREW- #4 x .250	82342	3	54	PULLEY- Starter	69158	1
	SPACER- (See Index #10)	93989	1	55	WASHER- Flat	63606	1
	SCREEN- Spark arrestor			56	SCREW- 10-32 x 5/8	80704	4
	(See Index #11)	D-93991	1	57	NUT- Rotor 5/16-24	81229	1
	SPACER- (See Index #12)	93990	1	58	WASHER- Flat	69145	1
15	TERMINAL- Spark plug (Solid State)			59	ROTOR & STARTER PAWL-		
	(Serviced with item #16)				(Solid State)	A-94717	1
16	TERMINAL- Spark plug (Point ignition)	A-33055	1		ROTOR & STARTER PAWL-		
17	SPARK PLUG- Champion DJ-7J	68616-S	1		(Point ignition)	A-69297-A	1
18	CYLINDER & CRANKCASE- (VI Super 2)	A-95072	1		Includes:		
	CYLINDER & CRANKCASE			60	KIT- Starter pawl (See Note 4)	A-70285-A	2
	(VI Super 2SL)	A-95073	1	61	CAP- Tank oil	A-70893-A	1
19	LEAD- Ground (Solid State)	A-94721	1		Includes:		
20	LEAD- High tension (See Note 1)	69326	1	62	GASKET- Fuel filler cap		
21	LEAD- Ground (Point Ignition)	A-95051	1		(See Note 3)	94838	1
22	SCREW- Hex w/washer (8-32 x 3/4)	82248	2	63	TANK- Oil	A-70583	1
23	CORE- Coil (Point ignition)	69324	1		Includes:		
24	COIL- Ignition (Point ignition)	69323	1	64	FILTER- Oil	A-68593	1
	RETAINER- Coil (Not shown)			65	TUBING- Rubber	70309-24	1
	(Point ignition)	69325	1	66	LINE- Pressure	A-69358	1
25	MODULE- Ignition (Solid State)	A-94711	1		Includes:		
26	POINT SET- Breaker	A-69336	1	67	CONNECTOR- Oil line	69659-1A	1
	(Point ignition)			68	VALVE- Check (Duckbill)	69451	1
	Includes:						
27	LEAD- Electrical (Point ignition)	70249	1				
28	SEAL- Lead (Point ignition)	69247	1				
29	WASHER- Flat (Point ignition)	84025	2				
30	WASHER- Lock (Point ignition)	83060	2				
31	SCREW- Fil hd. (6-32 x 3/8)						
	(Point ignition)	88026	2				
32	CLUTCH- "S" (See Note 2)	A-70351-A	1				
33	BEARING- Clutch	68512	1				
34	SPROCKET & DRUM	A-70221-C	1				
35	WASHER- Thrust (Clutch)	69138	1				
36	RING- Retaining (See Note 2)	93972	1				
37	TANK- Fuel	A-70582	1				
	Includes:						
38	FILTER- Fuel	A-69923	1				
	Includes:						
39	ELEMENT- Felt	64083	1				

NOTE 1: For Solid State Ignition cut wire to 6 1/2".

NOTE 2: Retaining Ring, item 36, must never be reused once it has been removed. Item 36, is included with both item 32 and 34.

NOTE 3: Use 70826 Gasket in A-70893 and A-70894 external thread caps. Use 69585 Gasket for caps with internal threads.

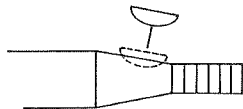
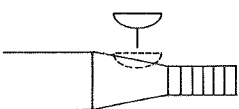
NOTE 4: Replacement Starter Pawl Kit, item #60 includes an oversized pin. Paint, stamp or mark to identify oversize pin when installing. Oversize pin can be installed tightly only once. If oversize pin is removed, the entire rotor assembly must be replaced.

VI Super 2, VI Super 2 SL

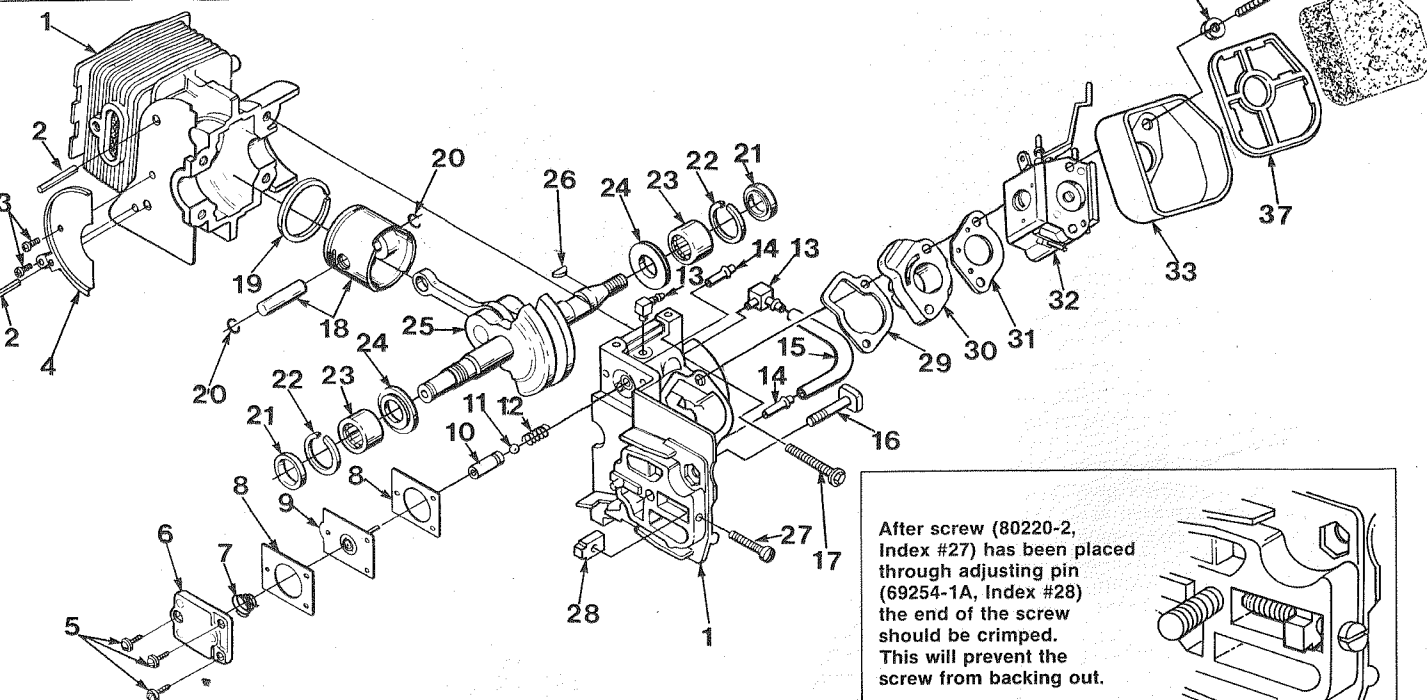
FIGURE 3

POINT IGNITION

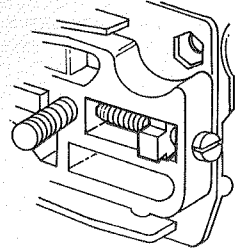
SOLID STATE IGNITION



Depending on ignition system, the Magneto Key must be oriented in the manner shown, before Rotor is assembled to shaft.



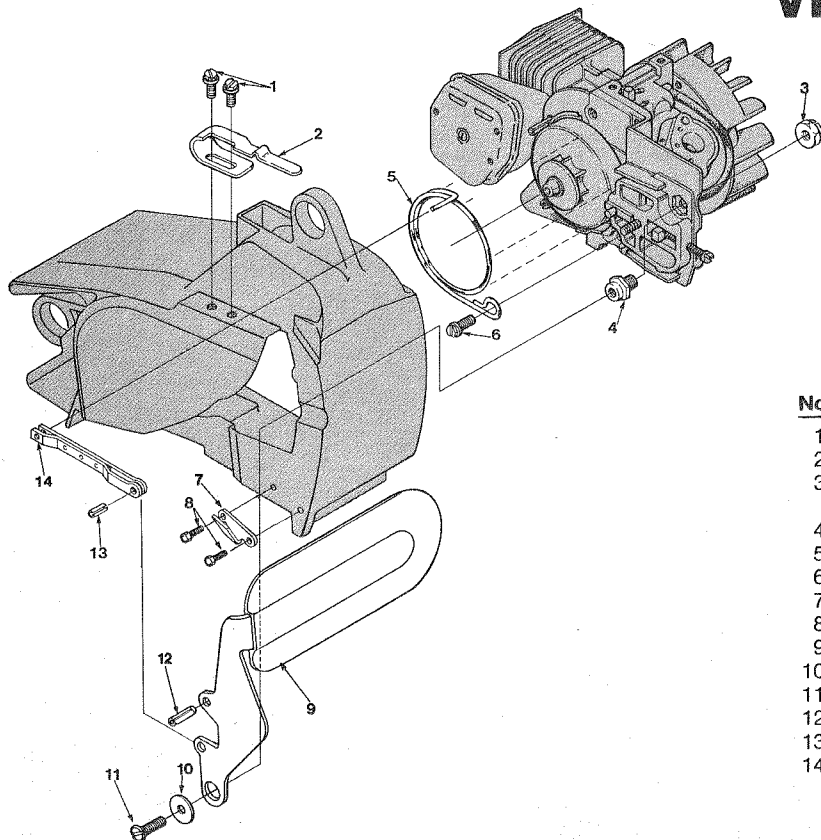
After screw (80220-2, Index #27) has been placed through adjusting pin (69254-1A, Index #28) the end of the screw should be crimped. This will prevent the screw from backing out.



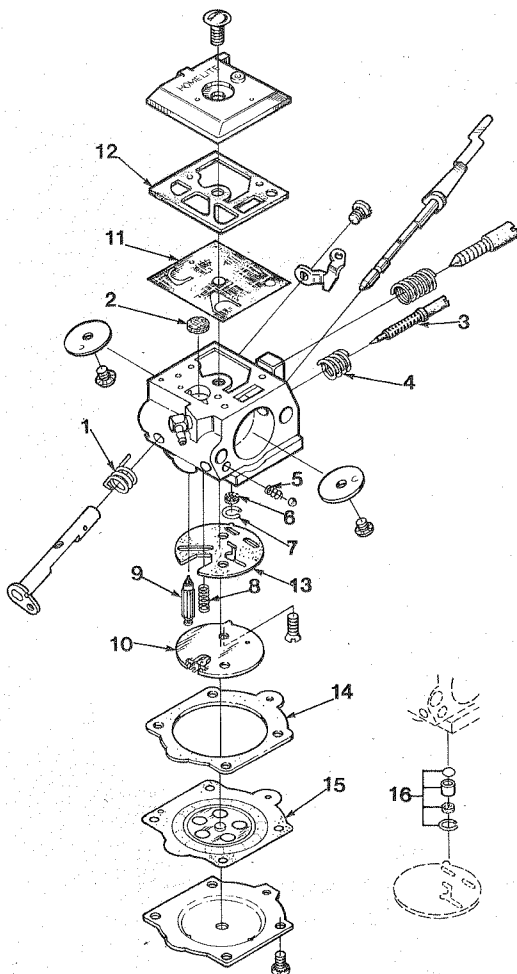
No.	Description	Part No.	Qty.	No.	Description	Part No.	Qty.
1	CRANKCASE & CYLINDER- (Solid State) VI Super 2	A-95072	1	15	LINE- Oil	70161	1
	CRANKCASE & CYLINDER- (Point ignition)	A-70226	1	16	BOLT- Guide bar	69195	1
	CRANKCASE & CYLINDER- (Solid State) VI Super 2SL	A-95073	1	17	SCREW- Sem hex hd., 8-32 x 1	88044	4
	CRANKCASE & CYLINDER- (Point ignition)	A-70837	1	18	PISTON & PIN	A-70224-A	1
	Includes:				Includes:		
2	PIN- Roll (VI Super 2SL only)	70763	2	19	PISTON RING	70205	1
3	SCREW- Tapping pan (VI Super 2SL only)	93932	2	20	RING- Piston retaining	65261	2
4	PLATE- Retaining (VI Super 2SL only)	70724	1	21	SEAL	94638	2
5	SCREW- Pan hd., 6-32 x 3/8	80571	3	22	SPACER- Seal	69407	2
6	COVER- Oil pump	69224-1C	1	23	BEARING- Needle	12530	2
7	SPRING- Oil pump	69447	1	24	WASHER- Thrust	69093-A	2
8	GASKET- Oil pump	69244-1	2	25	CRANKSHAFT- (Solid State)	A-94712	1
9	PLUNGER- Oil pump	A-12356-B	1		CRANKSHAFT- (Point ignition)	A-70352	1
10	BODY- Oil pump	69343-1	1	26	KEY- Magneto (see insert)	69250	1
11	BALL- Check valve	60051	1	27	SCREW- Adjusting fil. hd. 8-32 x 1	80220-2	1
12	SPRING- Check valve	68570	1	28	PIN- Adjusting	69254-1A	1
13	FITTING- Oil line	70204	2	29	GASKET- Intake manifold	69143	1
14	FITTING- Tube	69833	2	30	MANIFOLD- Intake	A-69373-A	1
				31	GASKET- Carburetor	65016	1
				32	CARBURETOR- HDC-58	A-94650	1
				33	CUP- Air filter	70557	1
				34	WASHER- Lock #10	83006-1	2
				35	SCREW- Hex hd. (10-32 x 2 1/4)	80481	2
				36	ELEMENT- Air filter	70566	1
				37	RETAINER- Air filter	70556	1

VI Super 2, VI Super 2 SL FIGURE 4

VI SUPER 2 SL CHAINBRAKE & HAND GUARD



No.	Description	Part No.	Qty.
1	SCREW- Hex head w/washer 8-32 x 3/8	88026	2
2	CLIP- Retaining	70732	1
3	NUT- Hex (3/8 - 24)	81192	1
	POWERHEAD (see figure 3 for breakdown)		
4	POST- Chain brake	70636	1
5	BAND- Brake	70637	1
6	SCREW- Hex (10-24 x 1/2) w/washer	88049	1
7	CHAIN- Stop	93649	1
8	SCREW- (8-32 x .500)	88042	2
9	HAND GUARD	A-94600	1
10	WASHER- Flat	70632	1
11	SCREW- (10-32 x 1/2)	82166	1
12	PIN- Roll (3/16 x 9/16)	93069	1
13	PIN- Spring (18 x 1/4)	57721	1
14	PIVOT- Link	A-70767	1



CARBURETOR

A-94650 HDC-58

- 94061-A REPAIR KIT (Includes: 1-15)
- 70655 GASKET/DIAPHRAGM KIT (Includes: 11-15)
- 93910 CHECK VALVE REPAIR KIT (#16)
- 94057 CIRCUIT PLATE- High altitude .029 (Not shown)

2978Y

HOMELITE DIVISION OF TEXTRON INC.

P.O. BOX 7047
14401 CAROWINDS BOULEVARD
CHARLOTTE, N.C. 28217

HOMELITE **TEXTRON**

Homelite Division of Textron Inc.