

OWNERS MANUAL

PRICE \$.25

SERIAL NUMBER

MODEL 902004 - 4 H.P. BRIGGS W/REV.
SERIAL NO. 055689 AND UP

MODEL 902009 - 6 H.P. TEC.
SERIAL NO. 018605 AND UP

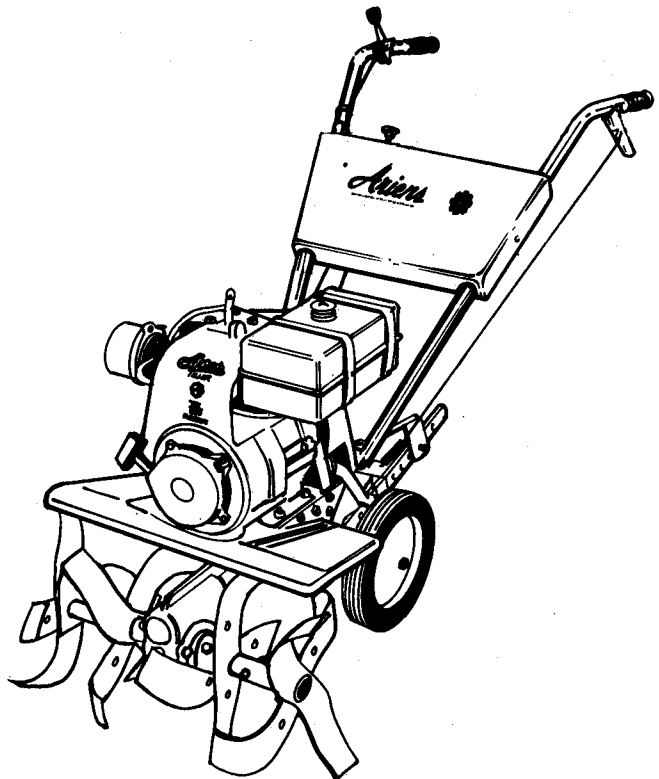
MODEL 902012 - 6 H.P. TEC.
SWING HANDLE W/REV.
SERIAL NO. 005103 AND UP

MODEL 902015 - 3.5 H.P. TEC.
SERIAL NO. 000101 AND UP

PART NUMBER 2156 C

Ariens

ROTARY TILLERS



▲ SAFETY MESSAGE ▲

The product for which you have requested information or replacement parts is not a current product. The replacement models incorporate product designs, safety features, safety instructions or warnings which represent the latest "State Of The Art" developments. For your safety and those around you please contact your nearest Ariens/Gravely Dealer for a demonstration of the current product safety provisions and features.

ARIENS COMPANY



BRILLION, WIS. 54110

Assembly Instructions Models 902004 & 902015

1. GENERAL

The Ariens Tillers are shipped in a single carton. Remove all items from the carton.

2. TINES

The tines are completely assembled. Position RH tine spool on right side of the tine shaft and LH tine spool on left side. Secure with a clevis pin (2123) and hair pin (67010).

CLEVIS
PIN

HAIR
PIN

FIGURE 1

3. WHEELS

Place the wheels in position on the frame and fasten each with a shoulder bolt (2404) and a locknut (65039). On Model 902015 use a washer (64002) between frame and wheel.

4. HANDLEBARS

Slide the upper section of the handlebars in place in the curved sections of the lower handlebars. Place one of the bolts (59050) provided through the upper hole on each side of the handlebars, from the outside, and fasten securely with hex nut (65040).

Hook the curved ends of the handlebar panel (2109) over the handlebars with the printed side of the panel pointing toward the tiller. Slide the panel up on the handlebars until the holes in the panel and the lower holes in the handlebars line up. Insert a bolt (59050) with curved washer (10196) through the panel and through the holes in both sections of the handlebars, from the outside, and fasten with hex nuts (65040).

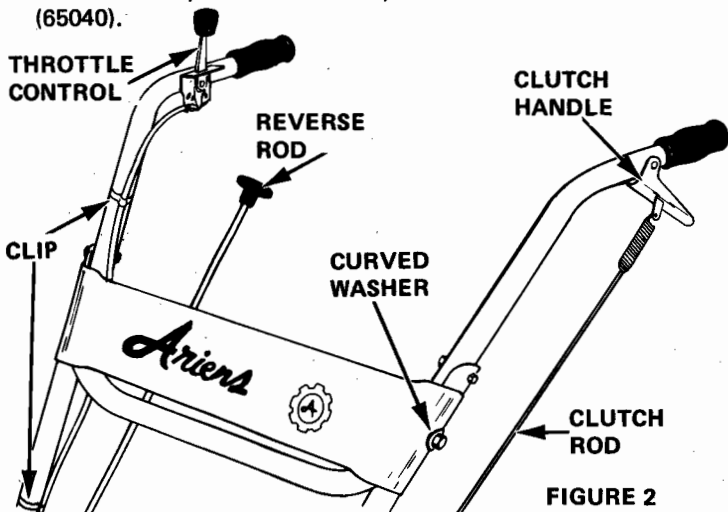


FIGURE 2

5. REVERSE OPERATING ROD

(Model 902004 only)

a. Pass the threaded end of the reverse operating rod (2057) up through the hole in the handlebars. Screw the shift ball (75015) in place onto the end of the rod. See Figure 2.

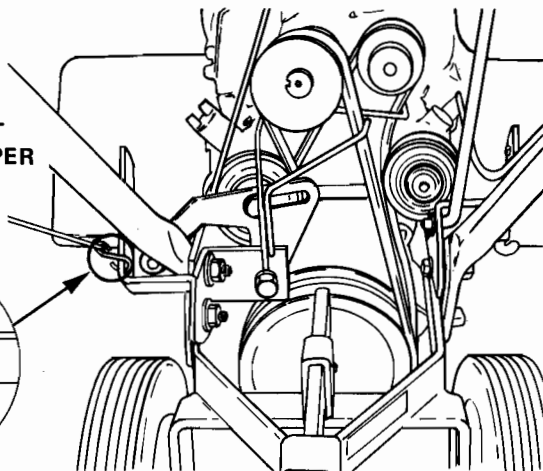
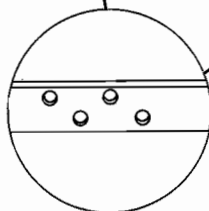
b. Place the bent portion of the rod through the hole in the reverse lever (right hand side of frame from the outside, and fasten in place with flat washer (64002) and cotter pin (67001). See Figure 3.

6. CLUTCH ROD

a. Hook the spring, at the end of the clutch rod (83008), through the hole provided on the underside of the clutch control lever mounted on the handlebar. See Figure 2.

b. Hook the lower end of the clutch rod through one of the holes in the clutch bracket. Use the hole in the bracket that provides the proper belt tightening and release as the clutch handle is squeezed.

USE HOLE THAT
PROVIDES PROPER
CLUTCHING



7. THROTTLE CONTROL

FIGURE 3

Using the two self-tapping screws (74001) provided, fasten the throttle control to the inside of the right hand handlebar. Use the two clips (69012) to hold the conduit to the handlebars. Place one clip on the upper handlebar and one on the lower end of the lower handlebar, See Figure 2.

8. TILLING DEPTH CONTROL

Insert the assembly into position in the frame. Fasten with the clevis pin and hair pin which were assembled in the frame. See Figure 4 on reverse side of sheet.

9. GEAR CASE

Check oil level in gear case. The oil level should be up to the bottom of the fill hole. Be sure unit is on level surface when checking. Use Ariens L-2 Gear Lube. See Figure 10.

10. ENGINE

Fill engine crankcase with oil according to the engine manual.

READ OWNER'S MANUAL AND ENGINE MANUAL BEFORE OPERATING.

Assembly Instructions Models 902009&902012

1. TINES AND WHEELS

Follow the instructions given in paragraphs 1, 2 and 3 on Page 1.

2. HANDLEBARS – MODEL 902009

Slide the upper section of the handlebars in place in the curved section of the lower handlebars. Place the panel in position and insert the four cap screws (59050) through the holes on each side of the handlebars, from the OUTSIDE, and fasten securely with the hex nuts (65040). See Figure 3. Tighten all handlebar hardware.

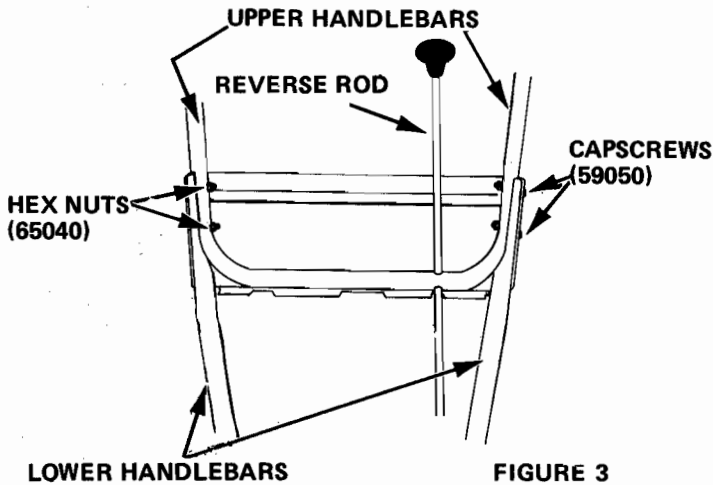


FIGURE 3

3. HANDLEBARS – MODEL 902012

The upper and lower handlebars and control panel are supplied fully assembled with the required hardware fastened in position. The swivel post is installed on the tiller frame. Position the handlebars on the swivel and secure the retainer to the tilt bracket with the two carriage bolts (62010), washers (64043), lockwashers (63004), and nuts (65018). Bolt the lower handlebars to the swivel with the cap screw (59074) and locknut (65042). With the hardware still loose, adjust the handlebars to a comfortable height and tighten hardware. See Figure 4.

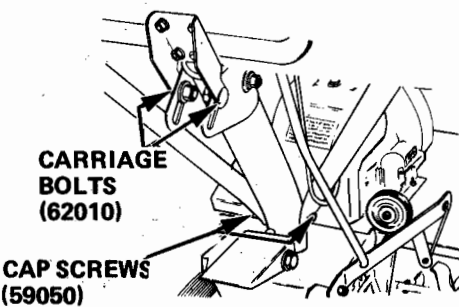


FIGURE 4

4. REVERSE OPERATING ROD

Install as described in paragraph 5 on page 1. Reverse rod will pass through the eyebolt on the back of the control panel instead of the hole in the handlebar. See Figure 3.

5. CLUTCH ROD

a. Model 902009 - Follow instructions in paragraph 6 on Page 1.

b. Model 902012 - The clutch cable is supplied installed on the swing handlebars. Remove one of the hex nuts from the end of the cable. Insert the end of the clutch cable into the clutch control bracket. Replace the hex nut. Connect the clutch cable to the clutch cable bracket. Adjust the hex nuts up or down until the clutch handle pulls the idler tight against the belt when depressed and permits the idler to fall away from the belt when released. Tighten the hex nuts to secure the cable. See Figure 5.

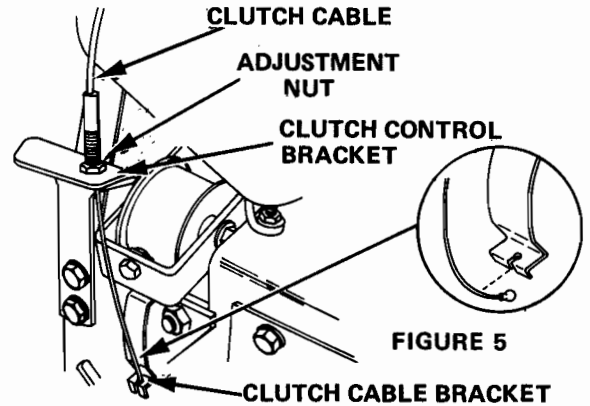


FIGURE 5

6. THROTTLE CONTROL

Install as described in paragraph 7 on page 1

7. TILLING DEPTH CONTROL

Insert the assembly into position in the frame. Fasten with the clevis pin and hair pin which were assembled in the frame see Figure 6

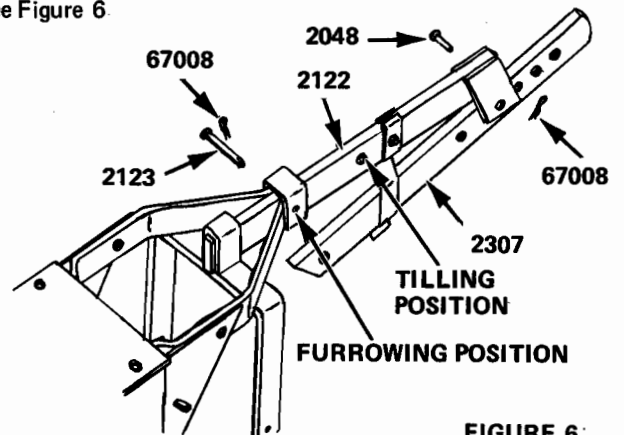


FIGURE 6

8. GEAR CASE

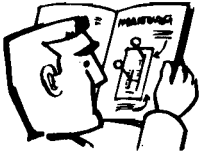
Check oil level in gear case. The oil level should be up to the bottom of the oil fill hole. Be sure unit is on level surface when checking. Use Ariens L-2 Gear Lube. See Figure 10.

9. ENGINE

Fill engine crankcase with oil according to the engine manual.

READ OPERATING INSTRUCTIONS AND ENGINE MANUAL BEFORE OPERATING.

SAFETY FIRST



Know your controls and how to stop quickly. Do not operate without proper instructions. Read the owner's manual.

Inspect work area and clear of objects which might be picked up, thrown, entangle, or damage tines.

Handle gasoline with care. It is highly flammable. Never add gasoline to a running or hot engine. Wipe up spilled gasoline. Do not run or fill engine indoors. Exhaust fumes are dangerous.



Keep children and pets a safe distance away. Keep feet and hands from moving tines. Keep safety devices in place. Keep all nuts, bolts, and screws tight. Stop engine before leaving operators position.

CONTROLS

- ① THROTTLE - Controls operating speed.
- ② CLUTCH - FORWARD - Compress and hold lever to engage tines for forward motion.
- ③ CLUTCH - REVERSE - (Models so equipped) Pull reverse rod and hold to reverse tines.
- ④ DEPTH - Adjust depth stick down to increase tilling depth.
- ⑤ STOP SWITCH - Engage to stop engine. Disengage before starting engine.
- ⑥ CHOKE - Move to choke position to start engine.

ADJUSTMENTS

- ⑦ TINE WIDTH - Tine width adjustable by removing or adding additional tines.
- ⑧ TINE SPEED - Tine speed on Model 902012 can be changed by repositioning belt. Front position is slow speed (75 rpm), rear position is fast speed (100 rpm).

To change to high speed:

- (1) Disconnect the spark plug lead.
- (2) Remove belt guard.
- (3) Start belt off lower sheave in direction of rotation.
- (4) Pull starter rope.
- (5) Move belt; start belt on top sheave.
- (6) Pull starter rope to roll belt on sheave.
- (7) Install belt guard.
- (8) Reconnect spark plug lead.

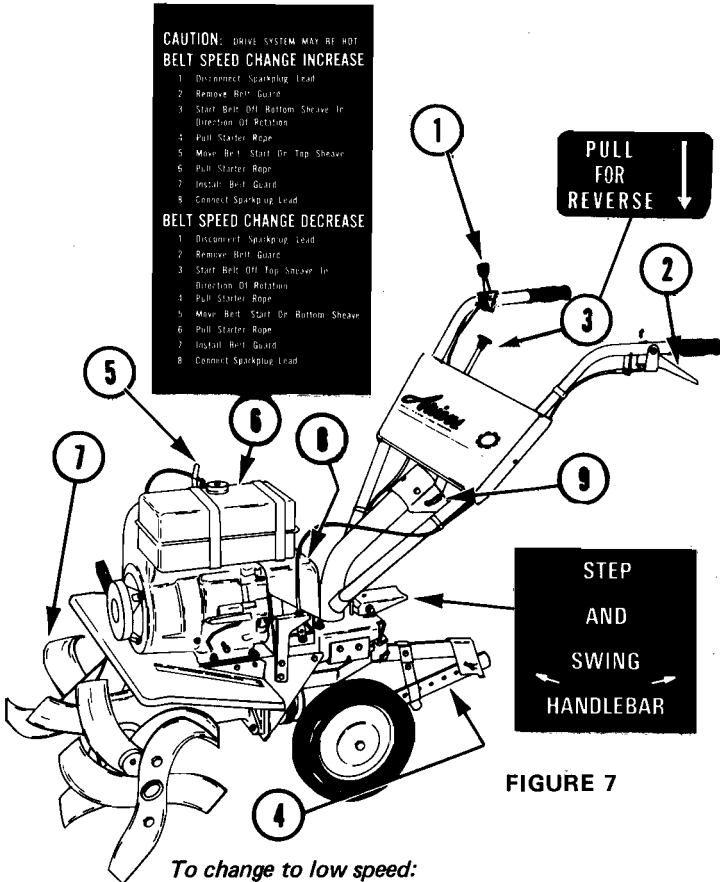


FIGURE 7

To change to low speed:

- (1) Disconnect spark plug lead.
 - (2) Remove belt guard.
 - (3) Start belt off upper sheave in direction of rotation.
 - (4) Pull starter rope.
 - (5) Move belt; start belt on bottom sheave.
 - (6) Pull starter rope to roll belt on sheave.
 - (7) Install belt guard.
 - (8) Reconnect spark plug lead.
- ⑨ **HANDLEBARS** - Handle bar height can be adjusted to a comfortable height. On Model 902012 handle bar can also be positioned side to side.

HIGH SPEED POSITION

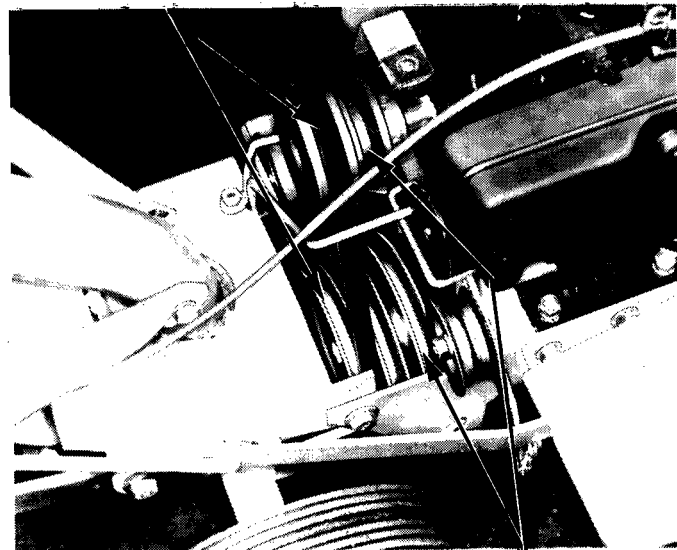


FIGURE 8

LOW SPEED POSITION

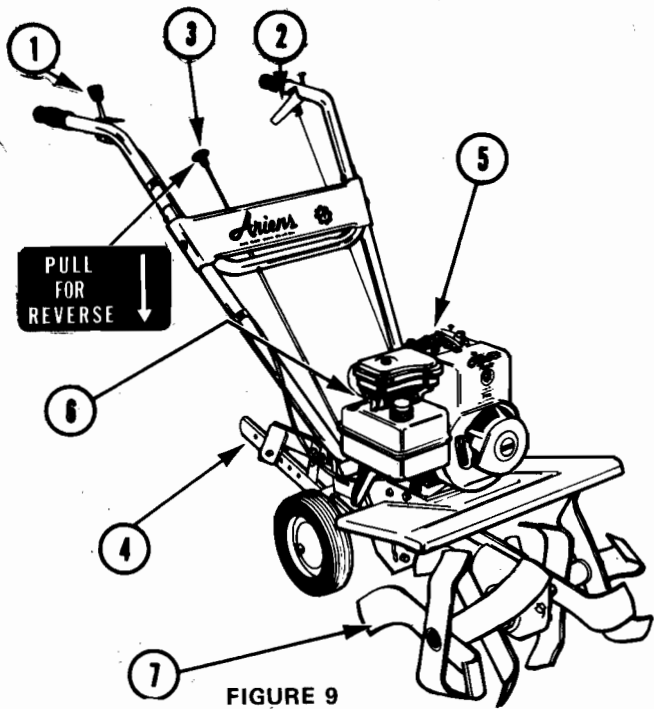


FIGURE 9

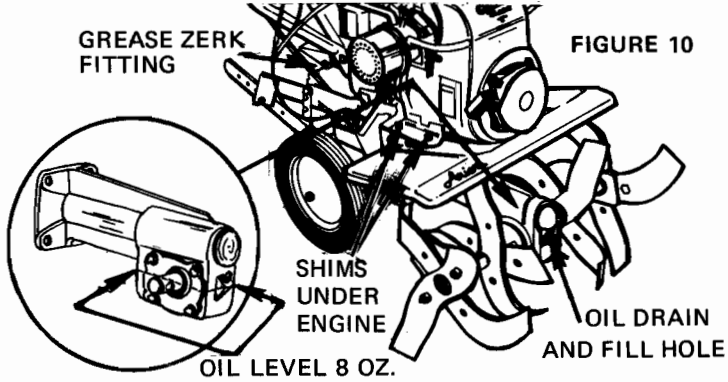
LUBRICATION

ENGINE: Fill crankcase with ARIENS Gard-N-Yard SAE 30 oil. Fill fuel tank with clean, fresh, regular gasoline.

NOTE

For detail instructions on engine refer to Engine Manual.

TILLER: Check oil level in gear case frequently. Keep oil level up to bottom of the oil fill hole. Be sure tiller is on level ground when checking. Use Ariens L-2 special gear lubricant only. Change oil each operating season.



GREASE ZERK FITTING

FIGURE 10

SHIMS UNDER ENGINE

OIL DRAIN AND FILL HOLE

OIL LEVEL 8 OZ.

SWING HANDLE (Model 902012) Grease the zerk fitting on the swing handle once each season. Use ARIENS Moly-Lithium grease.

OPERATION

BEFORE STARTING:

- Fill crankcase with ARIENS Gard-N-Yard SAE-30 oil.
- Fill fuel tank with fresh, clean, regular gasoline.
- Do not mix oil with gasoline.
- Make visual check with regard to safety precautions, obstructions, lubrication and maintenance.

TO START:

- Move choke to choke position.
- Disengage stop switch, if necessary.
- Pull starter rope to start engine.
- Move choke to no choke gradually as engine warms up.

TO TRANSPORT:

- Disengage depth control.
- Move throttle to desired speed.
- Engage forward clutch.
- To reverse unit, release forward clutch and pull on reverse rod.

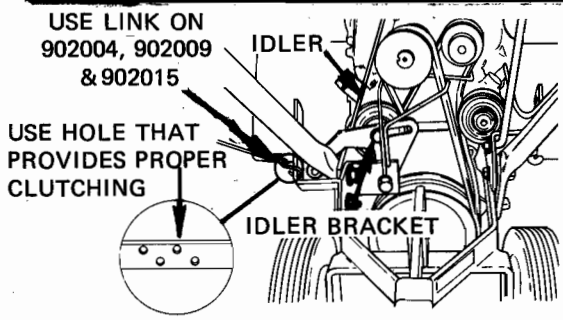
TO OPERATE:

- Engage depth control.
- Move throttle to desired speed.
- Engage forward clutch.
- To reverse unit, release forward clutch and pull on reverse rod.

TO STOP:

- Release clutch.
- Move throttle to slow position.
- Engage stop switch.
- Disengage depth stick.

ADJUSTMENTS



USE LINK ON 902004, 902009 & 902015

IDLER

USE HOLE THAT PROVIDES PROPER CLUTCHING

IDLER BRACKET

BELT ADJUSTMENT

FIGURE 11

Adjust the clutch by moving the clutch rod to one of the four holes in the clutch bracket that gives proper belt tightening and release. If further adjustment is required, move the idler in or out in the idler bracket. See Fig. 11 above. If proper adjustment cannot be reached by doing this, remove one or more of the shims which are located under the engine base and then readjust the idler. For critical adjustments, please contact your local authorized Ariens service dealer. For engine service or adjustments contact the engine manufacturers service outlet.

STORAGE

ENGINE:

Follow detail instructions in the engine manual.

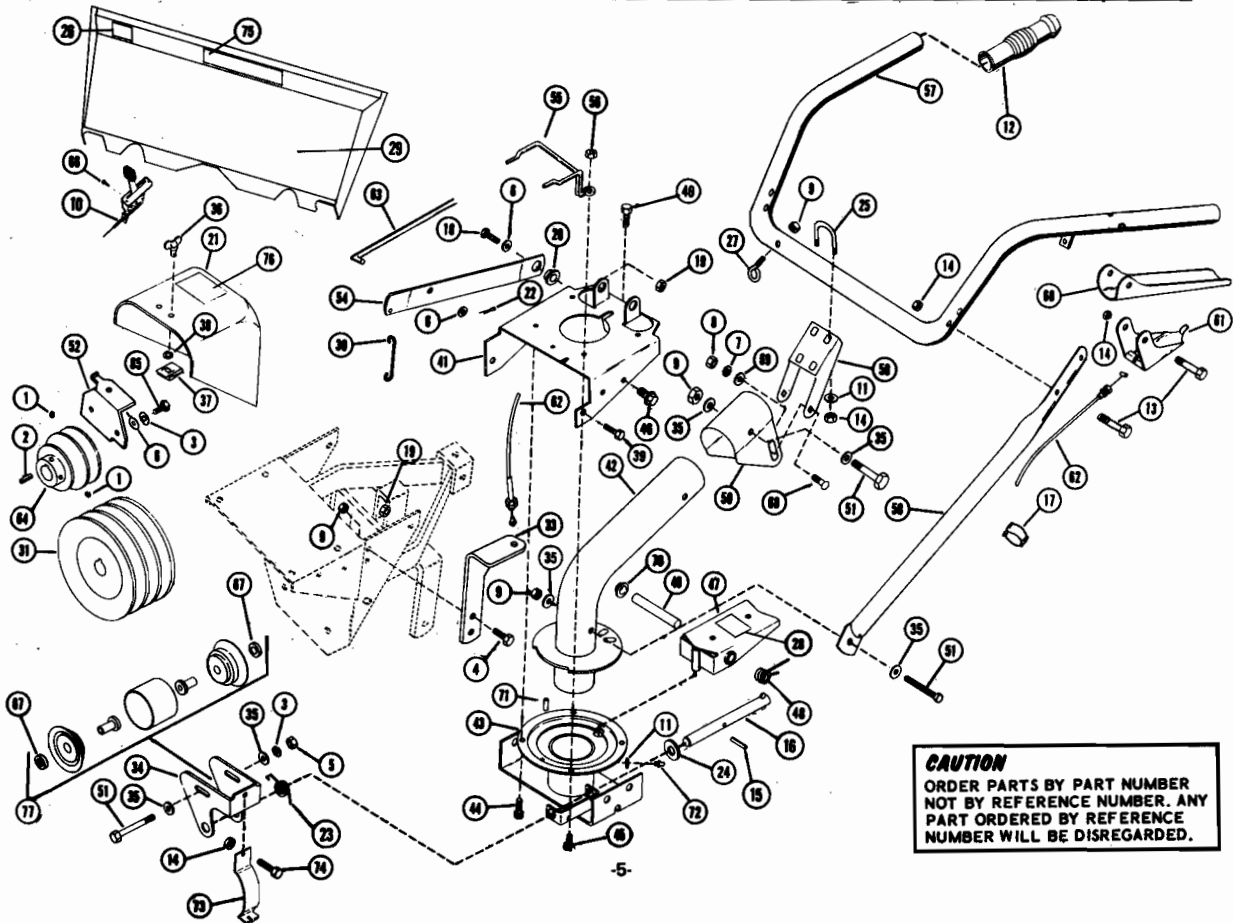
TILLER:

Lubricate, clean and repaint as necessary. Cover and store in dry place.

SWING HANDELBAR AND DASH PANEL 902009&902012

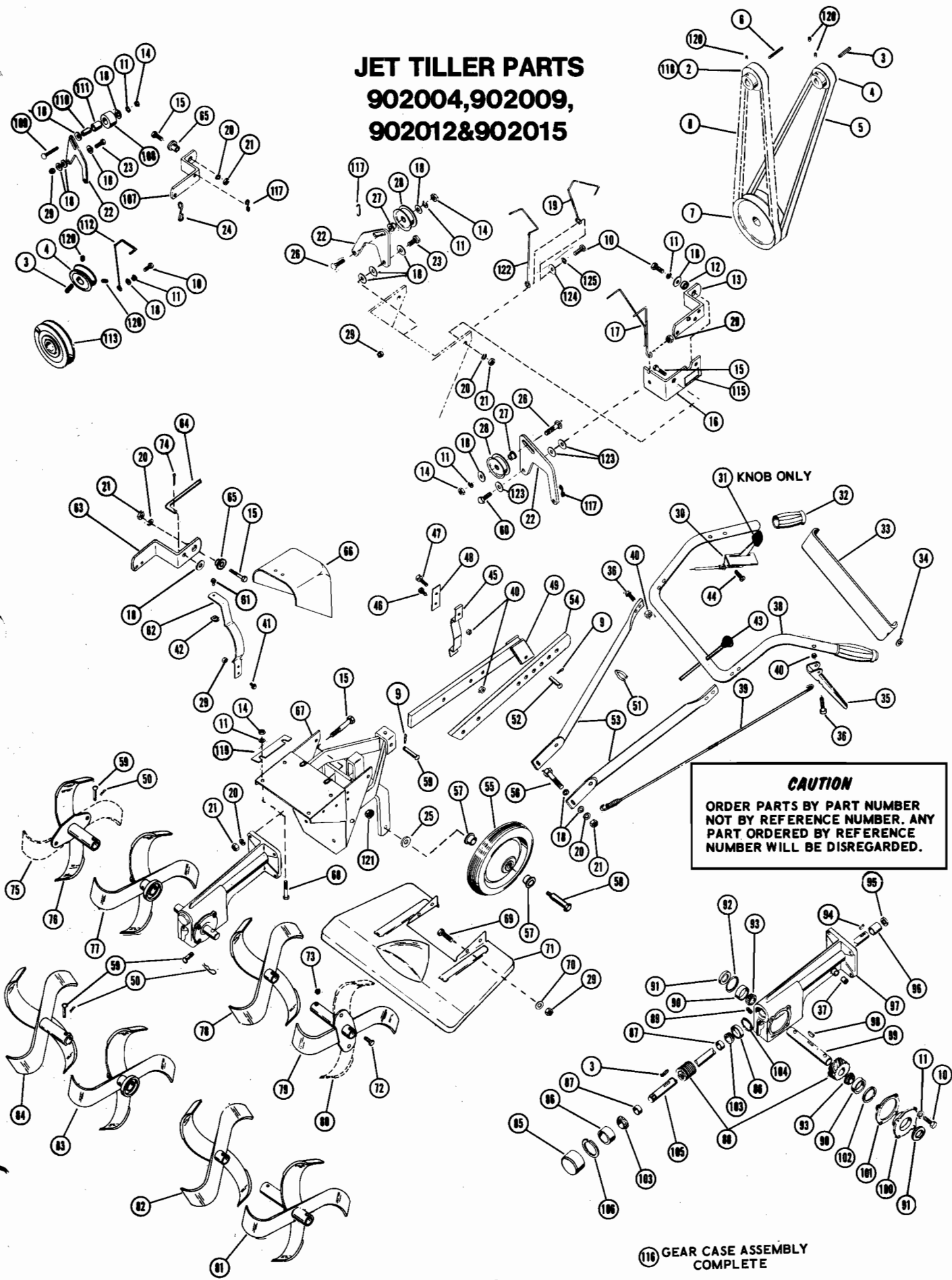
REF. NO.	PART NO.	STOCK NO.	DESCRIPTION	NO. REQ'D	REF. NO.	PART NO.	STOCK CODE	DESCRIPTION	NO. REQ'D
			902009 902012					902009 902012	
1	60004	S	SETSCREW, 5/16-18 x 3/8	2	40	70010	F	FLANGE WHIZLOCK SCREW	1
2	66013	M	KEY 3/16 Square x 1	1	41	2100	S	SWIVEL BRACKET	1
3	63003	F	LOCKWASHER, 5/16	3	42	2093	S	SWIVEL	1
4	59002	M	CAPSCREW	2	43	2152	S	SWIVEL RETAINER	1
5	65015	F	NUT, 5/16-18	1	44	70015	F	FLANGE WHIZLOCK SCREW	3
6	64002	F	WASHER 5/16 Wrought	4	45	70022	F	FLANGE WHIZLOCK SCREW	2
7	63004	F	LOCKWASHER, 3/8	2	46	70027	F	FLANGE WHIZLOCK SCREW	4
8	65018	F	NUT, 3/8-16	2	47	2095	S	RELEASE PEDAL	1
9	65042	F	LOCKNUT, 5/16-18	5	48	83079	M	TORSION SPRING	2
10	69042	F	THROTTLE CONTROL	1	49	2208	S	PIN	1
11	64094	M	WASHER	5	50	2117	S	TILT BRACKET	1
12	75006	S	HANDLE GRIP	2	51	59074	F	CAP SCREW, 5/16-18 x 2-3/4	3
13	59050	F	CAP SCREW, 1/4-20 x 1-1/2	5	52	2173	S	BELT GUARD BRACKET	1
14	65040	F	LOCKNUT, 1/4-20	10	54	2119	S	REVERSE LEVER	1
15	58034	M	ROLL PIN	1	55	2112	M	FORWARD BELT FINGER	1
16	2151	M	IDLER PIVOT ROD	1	56	65056	F	FLANGE WHIZLOCK	1
17	69012	M	CABLE CLIP	2	57	2264	S	UPPER HANDLEBAR	1
18	59004	F	CAP SCREW, 3/8-16 x 1	1	58	2099	M	LOWER HANDLEBAR	2
19	65039	F	LOCKNUT, 3/8-16	3	59	2169	S	RETAINER	1
20	2069	F	SHOULDER SPACER	1	60	2113	S	HANDLE	1
21	2115	S	BELT COVER	1	61	2129	S	HANDLE ADAPTER	1
22	67001	F	COTTER PIN, 3/32 x 3/4	1	62	69079	F	CLUTCH CABLE	1
23	83103	M	TORSION SPRING	1	63	2124	S	REVERSE ROD	1
24	64038	F	WASHER	1	64	502008	S	ENGINE SHEAVE	1
25	2137	S	"U" BOLT	2	65	59053	M	CAP SCREW	2
26	78242	O	REVERSE DECAL	1	66	74001	M	SCREW, Self Tapping, No. 10	2
27	2167	S	EYEBOLT	1	67	2111	M	SPACER	2
28	78243	O	SWING HANDLE DECAL	1	68	62010	F	CARRIAGE BOLT, 3/8-16 x 3/4	2
29	602043	S	DASH PANEL	1	69	64043	F	WASHER	2
29	2109	S	DASH PANEL	1	70	12086	F	CAP	2
30	2134	M	LINK	1	71	58014	M	ROLL PIN	1
31	73047	S	TRIPLE SHEAVE	1	72	22093	M	ZERK FITTING	1
33	2091	S	CLUTCH CONTROL BRACKET	1	73	2130	S	CLUTCH CABLE BRACKET	1
34	2153	S	IDLER BRACKET	1	74	59080	F	CAP SCREW, 1/4-20 x 5/8	1
35	64057	F	WASHER	6	75	78303	O	COVER DECAL	1
36	70028	M	FASTENER	1	76	78202	O	INSTRUCTION DECAL	1
37	70029	S	RECEPTACLE	1	77	502007	S	IDLER ASSEMBLY Also Includes;	1
38	70030	S	RETAINING RING	1				2-Item 67	
39	59023	F	CAP SCREW, 3/8-16 x 3/4	2				2-Item 35	
								1-Items 3, 5, 51.	

SUGGESTED PARTS STOCKING CODE
 F- Fast Moving Parts S- Slow Moving Parts
 M- Medium Moving Parts O- Customer Order Only



CAUTION
 ORDER PARTS BY PART NUMBER.
 NOT BY REFERENCE NUMBER. ANY
 PART ORDERED BY REFERENCE
 NUMBER WILL BE DISREGARDED.

JET TILLER PARTS 902004,902009, 902012&902015



CAUTION
ORDER PARTS BY PART NUMBER
NOT BY REFERENCE NUMBER. ANY
PART ORDERED BY REFERENCE
NUMBER WILL BE DISREGARDED.

JET TILLER PARTS LIST 902004,902009,902012&902015

REF. PART STOCK				NO.				REF. PART STOCK				NO.			
NO.	NO.	CODE	DESCRIPTION	REQ'D				NO.	NO.	CODE	DESCRIPTION	REQ'D			
				902004	902009	902012	902015					902004	902009	902012	902015
2	502003	M	REVERSE SHEAVE	1	1			63	2410	M	CLUTCH LEVER	1	1		
3	66013	M	KEY 3/16 Square x 1	2	2	1	2	64	2057	S	REVERSE ROD	1	1		
4	502006	M	ENGINE SHEAVE	1			1	65	2069	F	SHOULDER SPACER	1	1		1
4	502005	M	ENGINE SHEAVE		1			66	2115	S	BELT COVER	1	1		1
5	72056	F	BELT	1	1	1	1	67	2301	S	FRAME	1	1	1	1
6	66015	M	KEY No. 5 Woodruff	1	1	1		68	59073	F	CAP SCREW 5/16-18 x 1-3/4	4	4		4
7	73039	M	DOUBLE SHEAVE	1	1			68	59003	F	CAP SCREW 5/16-18 x 1 H.H.				4
8	72043	F	BELT REVERSE	1				69	59002	F	CAP SCREW 5/16-18 x 5/8	4	4	4	4
8	72085	F	BELT REVERSE		1			70	64007	F	WASHER	4	4	4	4
8	72099	F	BELT REVERSE			1		71	2419	S	TINE HOOD	1	1	1	1
9	67029	F	HAIRPIN COTTER	2	2	2	2	72	59026	F	CAP SCREW 7/16-14 x 1	4	4	4	4
10	59022	F	CAP SCREW, 5/16-18 x 3/4	6	6	5	5	73	65019	F	LOCKNUT 7/16 x 14	4	4	4	4
11	63003	F	LOCKWASHER 5/16	12	12	10	10	74	67001	F	COTTER PIN 3/32 x 3/4	1	1		
12	6071	M	BUSHING	1	1			75	2084	M	R.H. TINE	1	1	1	1
13	2171	M	CLUTCH LEVER	1	1			76	2012	M	R.H. OUTER TINE SPOOL	1	1	1	1
14	65015	F	NUT, 5/16 - 18	6	6	5	5	77	2010	M	R.H. INNER TINE SPOOL	1	1	1	1
15	59005	F	CAP SCREW, 3/8-16 x 1-1/4	6	6	4	6	78	2011	M	L.H. INNER TINE SPOOL	1	1	1	1
16	2405	M	FORWARD CLUTCH BRACKET	1	1			79	2013	M	L.H. OUTER TINE SPOOL	1	1	1	1
17	2406	M	BELT FINGER	1	1			80	2085	M	L.H. TINE	1	1	1	1
18	64002	F	WASHER 5/16	11	11	4	10	81	2077	M	L.H. OUTER TINE SPOOL				1
19	2165	M	BELT FINGER - Reverse		1			82	2075	M	L.H. INNER TINE SPOOL				1
20	63004	F	LOCKWASHER 3/8	8	8	4	8	83	2074	M	R.H. INNER TINE SPOOL				1
21	65018	F	NUT 3/8-16	8	8	4	8	84	2076	M	R.H. OUTER TINE SPOOL				1
22	2401	F	IDLER BRACKET	2	2	1	1	85	4037	M	DUST CAP	1	1	1	1
23	59069	F	CAP SCREW 5/16-18 x 1-1/4	1	1	1	1	86	54044	F	BEARING CUP	2	2	2	2
24	2146	M	LINK				1	87	2005	F	SPACER	2	2	2	2
25	64003	F	WASHER 1/2 Wrought				2	88	502009	F	WORM & WORM GEAR	1	1	1	1
26	62022	F	CARRIAGE BOLT 5/16-18 x 1-3/8	2	2	1					(Sold in pairs only)				
27	12131	F	BEARING SPACER	2	2	1		89	1138	S	PIPE PLUG 3/8 Square Head	1	1	1	1
28	12132	F	IDLER	2	2	1		90	54070	F	BEARING CUP	2	2	2	2
29	65042	F	LOCKNUT, 5/16-18	8	8	7		91	56066	F	SEAL	2	2	2	2
30	69039	F	THROTTLE CONTROL		1		1	92	57027	F	SNAP RING	1	1	1	1
30	69041	F	THROTTLE CONTROL	1				93	54069	F	BEARING CONE	2	2	2	2
31	75019	M	KNOB	1	1		1	94	66001	M	KEY No. 11 Woodruff	1	1	1	1
32	75006	M	HANDLE GRIP	2	2		2	95	56043	M	SEAL	1	1	1	1
33	2109	S	HANDLEBAR-PANEL	1	1		1	96	54022	F	NEEDLE BEARING	1	1	1	1
34	10196	M	HANDLEBAR WASHER	2	2		2	97	2014	S	GEAR CASE	1	1	1	1
35	2038	F	CLUTCH HANDLE	1	1		1	98	66008	M	KEY "A" Woodruff	1	1	1	1
36	59050	F	CAP SCREW 1/4-20 x 1-1/2	5	5		5	99	2007	M	TINE SHAFT	1	1	1	1
37	2009	S	BREATHER	1	1	1	1	100	2015	S	FLANGE	1	1	1	1
38	2421	S	UPPER HANDLEBAR, Painted	1	1		1	101	2008	F	GASKET	1	1	1	1
39	83008	M	CLUTCH SPRING	1	1		1	102	602983	F	SNAP RING - Adjusting	1	1	1	1
40	65040	F	LOCKNUT 1/4-20	7	7	2	7	103	54045	F	BEARING CONE	2	2	2	2
41	59002	F	CAP SCREW 5/16-18 x 5/8	2	2		2	104	57032	F	SNAP RING	1	1	1	1
42	65085	M	SPEED NUT	1	1		1	105	2003	F	WORM SHAFT	1	1	1	1
43	75015	M	SHIFT BALL	1	1	1		106	602982	F	SNAP RING - Adjusting Kit	1	1	1	1
44	74001	M	SELF TAPPING SCREW No. 10	2	2	2	2	107	2170	S	CLUTCH LEVER				1
45	2216	F	SPRING CLIP	1	1	1	1	108	2025	M	IDLER				1
46	59001	F	CAP SCREW 1/4-20 x 3/4	1	1	1	1	109	62018	F	CARRIAGE BOLT				1
47	59028	F	CAP SCREW 1/4-20 x 1/2	1	1	1	1	110	2026	M	SPACER				1
48	2217	M	SPRING SUPPORT	1	1	1	1	111	55016	M	BUSHING				1
49	2122	M	STICK BRACKET	1	1	1	1	112	2302	M	BELT FINGER				1
50	67010	F	HAIR PIN	4	4	4	4	113	73040	M	SHEAVE				1
51	69012	M	CABLE CLIP	3	2		2	115	78005	O	JET PATENT LABEL, Reverse	1	1	1	
52	2048	F	CLEVIS PIN 7/16	1	1	1	1	116	602999	O	GEAR CASE ASSEMBLY	1	1	1	1
53	2034	M	LOWER HANDLEBAR, Painted	2	2		2	117	2172	M	LINK	2	2		1
54	2307	M	DEPTH STICK	1	1	1	1	118	502004	S	REVERSE SHEAVE				1
55	71040	F	WHEEL (includes bushings)	2	2	2		119	2157	F	SHIM	4	4	4	4
55	71054	M	WHEEL (includes bushings)				2	120	60004	S	SETSCREW	4	4	2	2
56	59004	F	CAP SCREW 3/8-16 x 1	2	2		3	121	65060	M	LOCKNUT	2	2	2	2
57	55021	F	WHEEL BUSHING	4	4	4	4	122	2408	M	BELT FINGER	1		1	
58	2404	F	WHEEL BOLT	2	2	2	2	123	64093	M	WASHER	3	3		
59	2123	F	CLEVIS PIN	5	5	5	5	124	64123	M	WASHER	1	1		
60	59003	M	CAPSCREW 5/16-18x1	1	1			124	84002	M	WASHER				1
61	59039	F	CAP SCREW 5/16-18 x 1/2	1	1		1	125	63018	M	LOCKWASHER	1	1		
62	2174	S	BELT COVER BRACKET	1	1		1	125	63003	M	LOCKWASHER				1

SUGGESTED PARTS STOCKING CODE

- F - Fast Moving Parts
- M - Medium Moving Parts
- S - Slow Moving Parts
- O - Customer Order Only

ENGINE SPECIFICATIONS.

- Model 902004 - 4 H.P. Briggs 100292 Type 0154 Trim 02 with Ariens Decal 78305
- Model 902009 - 5 H.P. Tecumseh No. HS50-67082A with Ariens Decal No. 78306
- Model 902012 - 6 H.P. Tecumseh No. H60 - 75379J with Ariens Decal No. 78307
- Model 902015 - 3.5 H.P. Tecumseh No. H35-45475L with Ariens Decal 78344