

Directions for use of Parts Catalogue

1. Applicable model of machines

All component and option parts used for SA340,SA350,SA530,SA540,SA550 TILLER are listed in this parts catalogue.

Description of type of machines and particulars

Type of Machines	Engines
SA340	FEX91G - 4X
SA350	FEX91G - 4X
SA530	FA76D - 63X
SA540	FEX91G - 3X
SA550	FEX91G - 3X

2. Explanation for head paragraph

KEY	PART CODE	DESCRIPTION	QTY	TYPE OF MODEL				I T C	C O L	G R P	REMARKS
				TF15	TF17	TF19					
126	1614-508-200-00	FILTER(SUCTION) ASSY	1		*				4E		
127	V721-103-103-50	O-RING	1		*						
128	1614-508-260-00	FILTER(SUCTION) ASSY	1		*	981- -1799					
129	1614-508-262-00	FILTER(LH)	1	*	*	*					FIG. 164
		ASSY	1	*	*	*			4E	A	
			1	*	*	1- -1999		3			

- ① KEY shows the location of parts diagramed in the illustration.
- ② Parts numbers begin with `V` and `W` are standard parts of the market.
- ③ `LH` and `RH` on the parts name are described against the moving direction of the machine or are described on the condition how to install parts on the machines.
- ④ QTY shows the number of parts to be used for one unit of machine.
 `M` is indicated for parts supplied by a meter long.
 `ℓ` is indicated for parts supplied by liter.
 `AR` is indicated for parts need to be adjusted or regulated.
- ⑤ The following symbol classifies parts to be used for machines.

` * ` means standard parts.

` T ` shows that the parts can be installed as optional parts.

` R ` shows that the parts can be used as applicable parts to replace originally equipped parts.

- ⑥ Serial number : upper row shows the serial number for the first product and lower row for the last product.

Example : Serial no. 1 through to serial no. 1999.

- ⑦ ITC : Interchangeability

` 1 ` ... OLD ← NEW

New parts can be used in place of the old parts.

` 2 ` ... OLD → NEW

Old parts can be used in place of the new parts.

` 3 ` ... OLD ~~↔~~ NEW

Old parts and new parts can not be replaced each other.

- ⑧ COL : Color code

Color is signified with color code number for colored parts.

Please see the color list shown in the next page.

- ⑨ GRP : Parts shown in this column can be replaced by SET parts.

Exsample : Parts marked ① can be replaced by parts marked ②, and ③ for ④, so the rest follow in the same alphabetical order.

- ⑩ Remarks

* Other maker's part code number is shown in this column.

* When Fig. No. is shown in the Remark column of SET parts or ASSY parts, each of their component parts are listed in said Fig. No.

3. Color :

The following colors are used for color parts.

COLOR CODE	COLOR	SPRAY TYPE CODE NUMBER	PAINTS 4K DRUM	PAINTS 16K DRUM
0 I	SUPER RED	—————	—————	—————
6 G	SUMMER WHITE	1300-958-001-10	1300-958-003-00	1300-958-004-00
7 F	MIRROR BLACK	1300-954-001-10	1300-954-003-00	1300-954-004-00

NOTE : Color code is signified only for the parts assigned by the maker as color parts.

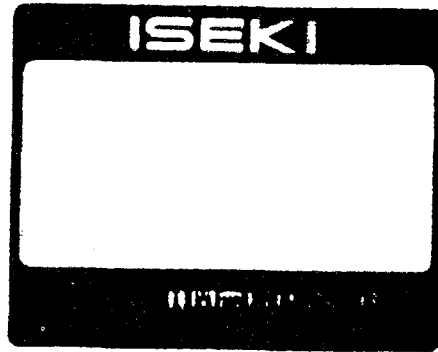
4. Serial Numbers:

- 1) For engines serial number is stamped on CRANK CASE COMP.

Please see Fig.No.1 – 8

- 2) For chassies serial number is shown on the LABEL.

Please see



5. Parts Order

- 1) Parts numbers listed in the parts catalogue are all registered in "ISEKI on-line computer".
- 2) When you order parts, please make sure of correct numbers.
- 3) When substitute parts is available, the part number ordered will be automatically turned to a new part number.
- 4) Please be sure to use "ISEKI GENUINE PARTS".

Any other similar parts other than ISEKI parts when used may cause a trouble that makes us unable to repair or guarantee the warrant.

CONTENTS

SA530

エンジン (FA76D-63X)

CYLINDER/CRANK CASE SYSTEM	Fig. 1
PISTON/CRANK SHAFT SYSTEM	Fig. 2
VALVE/CAM SHAFT SYSTEM	Fig. 3
OIL SYSTEM	Fig. 4
COOLING SYSTEM	Fig. 5
ELECTRICAL SYSTEM	Fig. 6
CONTROL SYSTEM	Fig. 7
CARBURETOR SYSTEM	Fig. 8
AIR FILTER/MUFFLER SYSTEM	Fig. 9
FUEL FILTER SYSTEM	Fig. 10
STARTER SYSTEM	Fig. 11
LABEL	Fig. 12
TOOL	Fig. 13

CONTENTS

SA340, 350, 540, 550

エンジン (FEX91G-3X, FEX91G-4X)

CYLINDER/CRANK CASE SYSTEM	Fig. 1
PISTON/CRANK SHAFT SYSTEM	Fig. 2
VALVE/CAM SHAFT SYSTEM	Fig. 3
OIL SYSTEM	Fig. 4
COOLING SYSTEM (1)	Fig. 5
COOLING SYSTEM (2)	Fig. 6
ELECTRICAL SYSTEM	Fig. 7
CONTROL SYSTEM	Fig. 8
CARBURETOR SYSTEM	Fig. 9
AIR FILTER/MUFFLER SYSTEM (1)	Fig. 10
AIR FILTER/MUFFLER SYSTEM (2)	Fig. 11
FUEL FILTER SYSTEM (1)	Fig. 12
FUEL FILTER SYSTEM (2)	Fig. 13
STARTER SYSTEM	Fig. 14
LABEL	Fig. 15
TOOL	Fig. 16

CONTENTS

SA340, 350, 530, 540, 550

CHASSIS

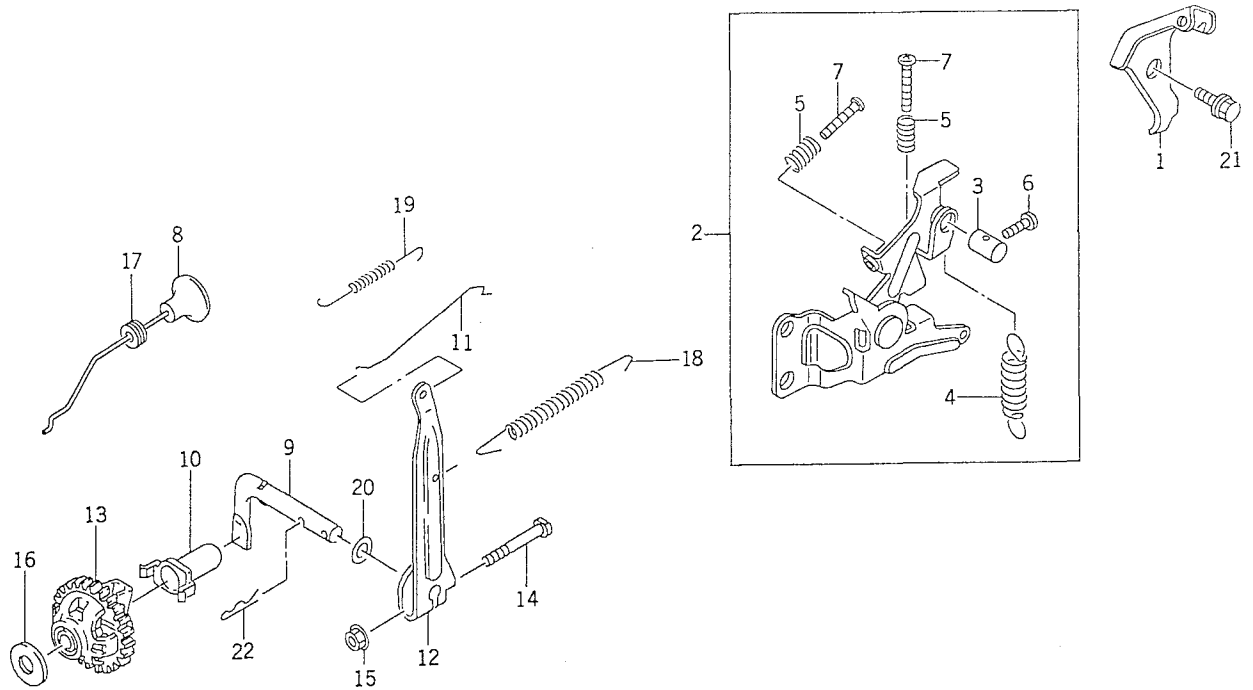
FRAME (FRONT),BUMPER SYSTEM	Fig. 1
HITCH (FRONT/SA350) SYSTEM (OPTION FOR SA340,530,540 TYPE)	Fig. 2
ENGINE SYSTEM	Fig. 3
HITCH (REAR) SYSTEM	Fig. 4
BAR (DEPTH) SYSTEM (OPTION FOR SA350 AND SA550 TYPE)	Fig. 5
HITCH (CULTI) SYSTEM (OPTION)	Fig. 6
PULLEY SYSTEM	Fig. 7
TENSION SYSTEM	Fig. 8
CASE (TRANSMISSION/30) SYSTEM (SA540 TYPE)	Fig. 9
CASE (TRANSMISSION/33) SYSTEM (SA350,550 TYPE)	Fig. 10
CASE (TRANSMISSION/20) SYSTEM (SA340,530 TYPE)	Fig. 11
MAIN SHAFT SYSTEM	Fig. 12
COUNTER SHAFT SYSTEM	Fig. 13
REDUCTION SHAFT SYSTEM	Fig. 14
WHEEL SHAFT SYSTEM	Fig. 15
SHAFT (BACK),SHIFTER SYSTEM (SA350,540,550 TYPE)	Fig. 16
TUBE (SPACER),BOSS (FREE WHEEL) SYSTEM	Fig. 17
FRAME (HANDLE) SYSTEM	Fig. 18
BRACKET (HANDLE/30) SYSTEM (SA340,540 TYPE)	Fig. 19
BRACKET (HANDLE/20) SYSTEM (SA530 TYPE)	Fig. 20
BRACKET (HANDLE) SYSTEM (SA550 TYPE)	Fig. 21
BRACKET (HANDLE) SYSTEM (SA350 TYPE)	Fig. 22
HANDLE SYSTEM	Fig. 23
HANDLE SYSTEM (SA550 TYPE)	Fig. 24
LEVER (CLUTCH) SYSTEM (SA340,530,540 TYPE)	Fig. 25
LEVER (CLUTCH) SYSTEM (SA350,550 TYPE)	Fig. 26
ACCELERATOR SYSTEM	Fig. 27
SHIFT (CHANGE),ARM SYSTEM (SA350,540,550 TYPE)	Fig. 28
HOOD SYSTEM (SA530,540,550 TYPE)	Fig. 29

FUEL TANK (30) SYSTEM (SA540,550 TYPE)	Fig. 30
FUEL TANK (20) SYSTEM (SA530 TYPE)	Fig. 31
COVER (BELT/30) SYSTEM (SA540 TYPE)	Fig. 32
COVER (BELT/20) SYSTEM (SA530 TYPE)	Fig. 33
COVER (BELT) SYSTEM (SA350,550 TYPE)	Fig. 34
COVER (BELT) SYSTEM (SA340 TYPE)	Fig. 35
FENDER SYSTEM	Fig. 36
FENDER (SUB) SYSTEM (OPTION FOR SA350,550 TYPE)	Fig. 37
ELECTORICAL SYSTEM	Fig. 38
ROTARY PIPE,DISC (SIDE) SYSTEM (SA340,540 TYPE) (OPTION)	Fig. 39
TUBE (ROTARY) SYSTEM (SA530 TYPE) (OPTION)	Fig. 40
WHEEL (FRONT) SYSTEM	Fig. 41
LABEL (MODEL) SYSTEM	Fig. 42
LABEL,MANUAL SYSTEM	Fig. 43

ENGINE

FA76D-63X...SA530

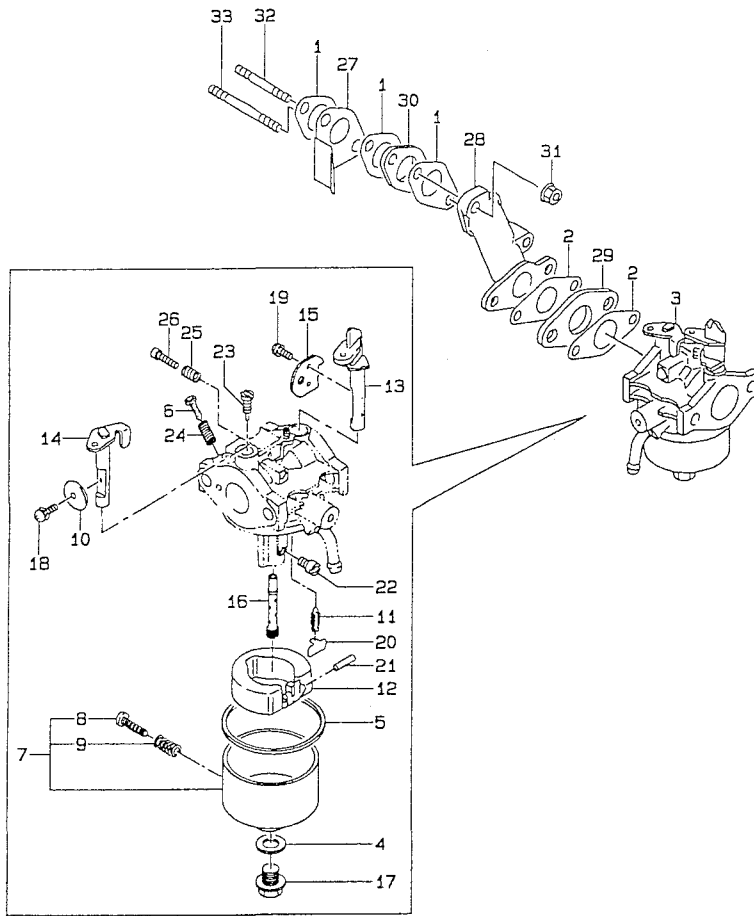
FIG. 7 CONTROL SYSTEM



5207-007

KEY	PART CODE	DESCRIPTION	QTY	TYPE OF MODEL		I T C	C O L	G R P	REMARKS
				FA76D 63X					
1	5145 - 875 - 337 - BX	BRACKET	1	*					3145875337B
2	5132 - 362 - 075 - XX	LEVER COMP	1	*					132362075
3	5920 - 152 - 120 - XX	NUT	1	*					920152120
4	5145 - 965 - 317 - AX	SPRING	1	*					3145965317A
5	5921 - 442 - 266 - XX	SPRING	2	*					921442266
6	5214 - B04 - 08X - XX	SCREW M4X8	1	*					214B0408
7	5214 - B04 - 20X - XX	SCREW - PAN + -	2	*					214B0420
8	5161 - 692 - 110 - XX	LINK/CHOKE	1	*					161692110
9	5390 - 032 - 065 - XX	ARM,PIVOT	1	*					390032065
10	5144 - 015 - 121 - BX	SLEEVE,GOVERNOR	1	*					3144015121B
11	5145 - 995 - 231 - CX	ROD/GOVERNOR	1	*					3145995231C
12	5145 - 995 - 211 - BX	ARM/GOVERNOR	1	*					3145995211B
13	5145 - 015 - 110 - AX	GOVERNOR	1	*					3145015110A
14	5920 - 022 - 269 - XX	BOLT	1	*					920022269
15	5920 - 151 - 193 - XX	NUT	1	*					920151193
16	5144 - 015 - 135 - AX	WASHER	1	*					3144015135A
17	5920 - 712 - 126 - XX	GROMMET	1	*					920712126
18	5145 - 015 - 314 - CX	SPRING	1	*					3145015314C
19	5145 - 995 - 232 - CX	SPRING	1	*					3145995232C
20	5922 - 002 - 029 - XX	WASHER	1	*					922002029
21	5186 - B06 - 10X - XX	BOLT/M6X10	1	*					186B0610
22	5554 - A06 - 00X - XX	PIN	1	*					554A0600

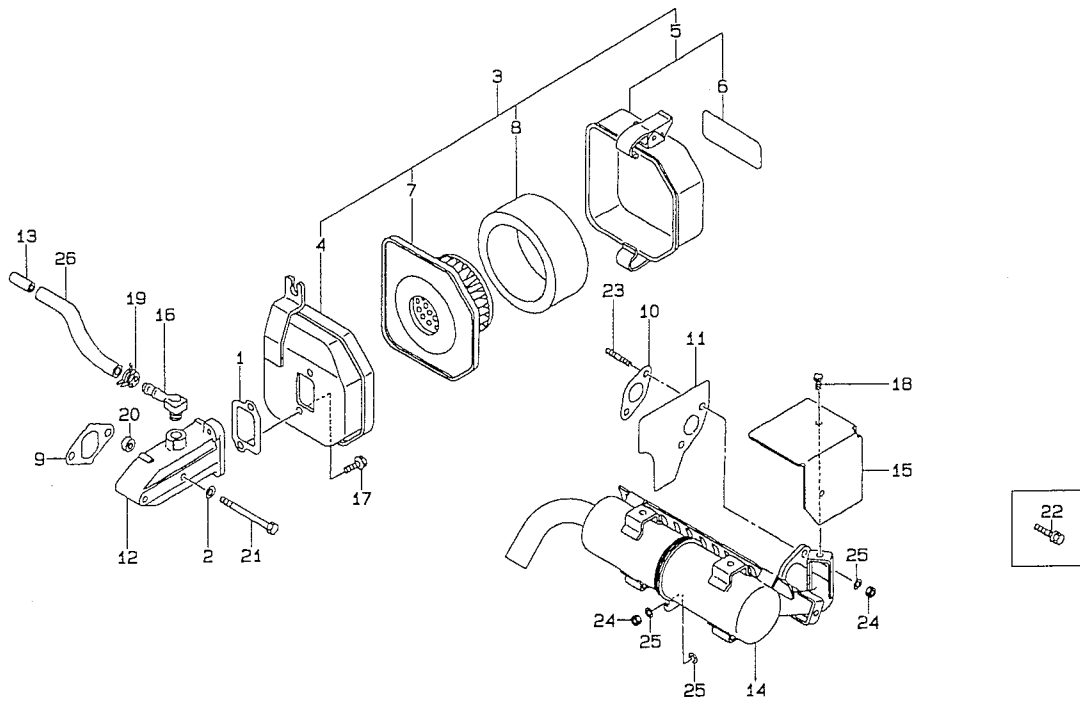
FIG. 8 CARBURETOR SYSTEM



5207-008

KEY	PART CODE	DESCRIPTION	QTY	TYPE OF MODEL		I T C	C O L	G R P	REMARKS
				FA76D	63X				
1	5110 - 602 - 103 - XX	GASKET/INSULATOR	3	*					110602103
2	5110 - 602 - 104 - XX	GASKET/INTAKE PIPE	2	*					110602104
3	5150 - 032 - 331 - XX	CARBURETOR ASSY	1	*					150032331
4	5144 - 996 - 159 - AX	GASKET	1	*					3144996159A
5	5145 - 986 - 128 - AX	GASKET	1	*					3145986128A
6	5144 - 996 - 114 - AX	SCREW,PILOT	1	*					3144996114A
7	5160 - 202 - 076 - XX	FLOAT CHAMBER ASSY	1	*					160202076
8	5154 - 706 - 133 - AX	SCREW,DRAIN	1	*					3154706133A
9	5131 - 226 - 116 - 00	SPRING	1	*					313122611600
10	5145 - 996 - 101 - AX	VALVE THROTTLE	1	*					3145996101A
11	5145 - 956 - 122 - AX	VALVE,NEEDLE	1	*					3145956122A
12	5145 - 956 - 126 - AX	FLOAT	1	*					3145956126A
13	5144 - 996 - 142 - AX	SHAFT,CHOKE	1	*					3144996142A
14	5145 - 996 - 139 - AX	SHAFT/CARBURETOR	1	*					3145996139A
15	5145 - 966 - 102 - AX	VALVE	1	*					3145966102A
16	5145 - 956 - 129 - AX	NOZZLE/MAIN	1	*					3145956129A
17	5145 - 966 - 143 - AX	BOLT	1	*					3145966143A
18	5145 - 726 - 137 - AX	SCREW	1	*					3145726137A
19	5154 - 706 - 137 - AX	SCREW	2	*					3154706137A
20	5145 - 956 - 134 - AX	GRIP	1	*					3145956134A
21	5144 - 996 - 127 - AX	PIN,FLOAT	1	*					3144996127A
22	5920 - 632 - 234 - XX	JET/MAIN	1	*					920632234
23	5155 - 996 - 112 - AX	JET,PILOT	1	*					3155996112A
24	5127 - 506 - 116 - 00	SPRING	1	*					312750611600
25	5158 - 256 - 116 - AX	SPRING	1	*					3158256116A

FIG. 9 AIR FILTER/MUFFLER SYSTEM



5207-009

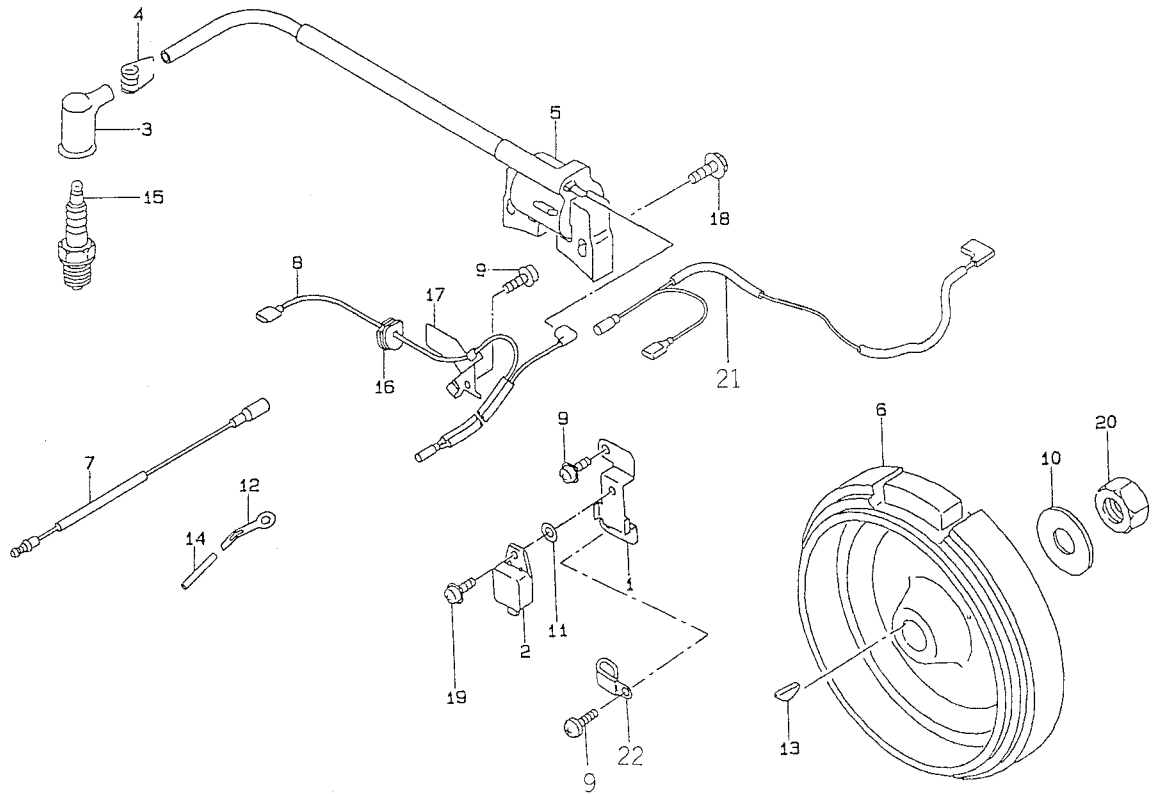
KEY	PART CODE	DESCRIPTION	QTY	TYPE OF MODEL		I T C	C O L	G R P	REMARKS
				FA76D 63X					
1	5145 - 951 - 332 - AX	GASKET	1	*					3145951332A
2	5155 - 047 - 447 - AX	GASKET	2	*					3155047447A
3	5110 - 102 - 441 - 9H	AIR FILTER ASSY	1	*					1101024419H
4	5110 - 112 - 235 - XX	CASE/AIR FILTER	1	*					110112235
5	5110 - 122 - 326 - 9H	CAP	1	*					1101223269H
6	5560 - 312 - 262 - XX	LABEL	1	*					560312262
7	5145 - 031 - 312 - AX	ELEMENT/AIR FILTER	1	*					3145031312A
8	5145 - 031 - 313 - AX	ELEMENT/AIR FILTER	1	*					3145031313A
9	5110 - 602 - 024 - XX	GASKET/AIR FILTER	1	*					110602024
10	5110 - 602 - 100 - XX	GASKET/MUFFLER	1	*					110602100
11	5131 - 832 - 485 - XX	PLATE	1	*					131832485
12	5160 - 602 - 170 - XX	PIPE/INTAKE	1	*					160602170
13	5144 - 011 - 341 - AX	PIPE	1	*					3144011341A
14	5490 - 702 - 629 - 9Y	MUFFLER COMP	1	*					4907026299Y
15	5491 - 072 - 134 - 9X	COVER/EXHAUST PIPE	1	*					4910721349X
16	5127 - 691 - 533 - BX	ELBOW	1	*					3127691533B
17	5144 - 131 - 316 - AX	BOLT	2	*					3144131316A
18	5920 - 092 - 322 - XX	SCREW	2	*					920092322
19	5136 - 791 - 532 - 00	CLIP	1	*					313679153200
20	5920 - 492 - 097 - XX	SEAL OIL	1	*					920492097
21	5921 - 502 - 120 - XX	BOLT	2	*					921502120
22	5110 - R06 - 08X - XX	BOLT M6X8	4	*					110R0608
23	5171 - G06 - 16X - XX	STUD	2	*					171G0616
24	5311 - B06 - 00X - XX	NUT/M6	3	*					311B0600
25	5410 - B06 - 00X - XX	WASHER/M6	4	*					410B0600

ENGINE

FEX91G-3X ... SA540 • SA550

FEX91G-4X ... SA340 • SA350

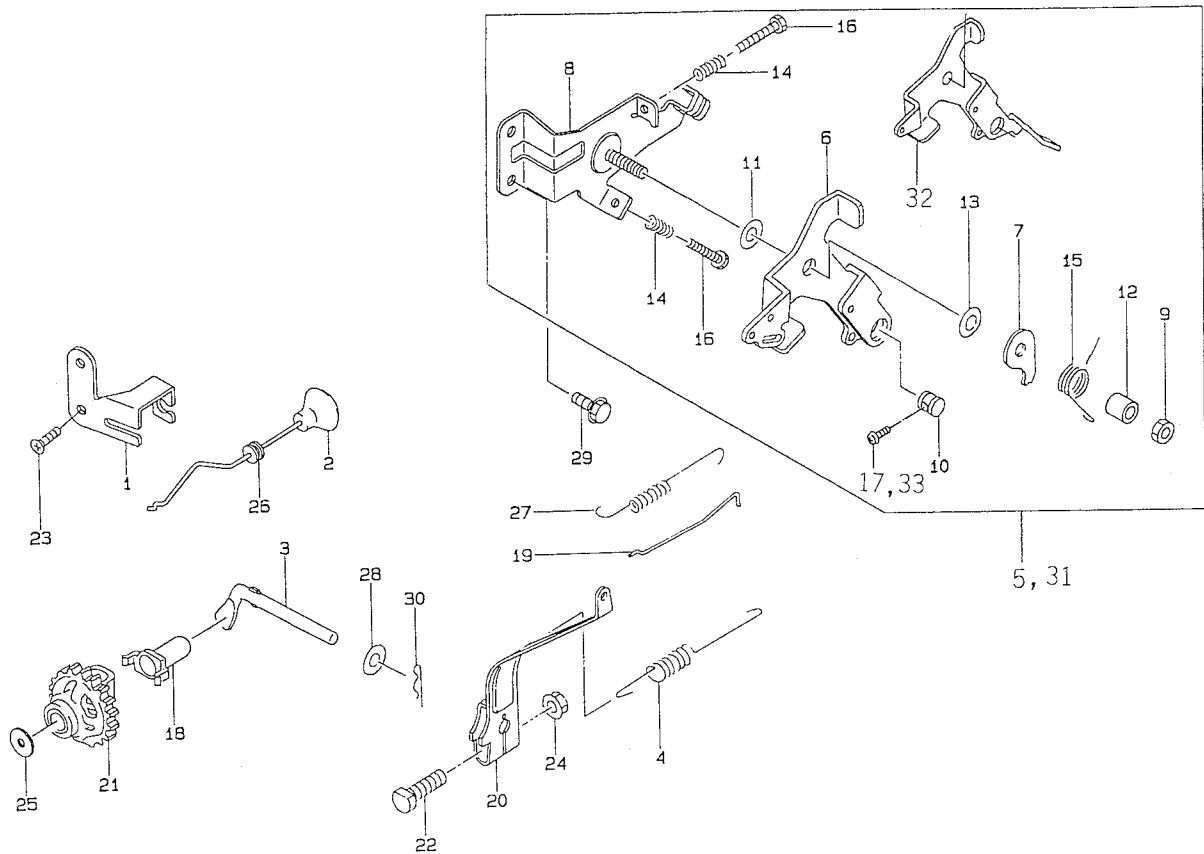
FIG. 7 ELECTRICAL SYSTEM



5208-C08

KEY	PART CODE	DESCRIPTION	QTY	TYPE OF MODEL		I T C	C O L	G R P	REMARKS
				FEX91G 3X	FEX91G 4X				
1	5110 - 462 - 142 - XX	BRACKET	1	*	*				110462142
2	5211 - 192 - 139 - XX	IGNITER	1	*	*				211192139
3	5211 - 302 - 066 - XX	CAP,SPARK PLUG	1	*	*				211302066
4	5172 - 708 - 419 - AX	SPRING	1	*	*				3172708419A
5	5211 - 712 - 188 - XX	IGNITION COIL ASSY	1	*	*				211712188
6	5211 - 942 - 246 - XX	FLYWHEEL COMP	1	*	*				211942246
7	5260 - 112 - 112 - XX	WIRE	1	*	*				260112112
8	5260 - 112 - 287 - XX	WIRE/LEAD	1	*	*				260112287
9	5920 - 092 - 166 - XX	SCREW	3	*	*				920092166
10	5144 - 013 - 482 - AX	WASHER	1	*	*				3144013482A
11	5158 - 016 - 625 - AX	WASHER	1	*	*				3158016625A
12	5920 - 372 - 165 - XX	CLAMP	1	*	*				920372165
13	5920 - 382 - 077 - XX	KEY	1	*	*				920382077
14	5920 - 592 - 156 - XX	TUBE	1	*	*				920592156
15	5920 - 701 - 167 - XX	PLUG	1	*	*				920701167
16	5920 - 712 - 135 - XX	GROMMET	1	*	*				920712135
17	5921 - 702 - 062 - XX	CLAMP	1	*	*				921702062
18	5130 - B60 - 25X - XX	BOLT	2	*	*				130B6025
19	5242 - B04 - 10X - XX	BOLT	1	*	*				242B0410
20	5314 - G14 - 00X - XX	NUT	1	*	*				314G1400
21	5260 - 112 - 270 - XX	WIRE/LEAD	1		*				260112270
22	5920 - 372 - 171 - XX	CLAMP	1		*				920372171

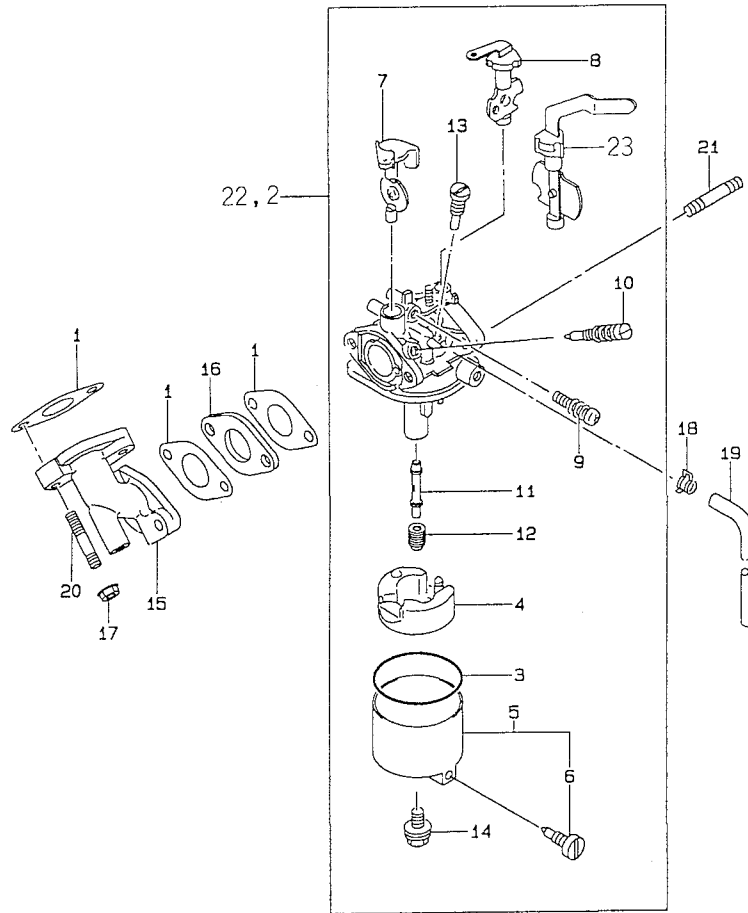
FIG. 8 CONTROL SYSTEM



5208-CG7

KEY	PART CODE	DESCRIPTION	QTY	TYPE OF MODEL		I T C	C O L	G R P	REMARKS
				FEX916 3X	FEX916 4X				
1	5110 - 482 - 023 - XX	BRACKET	1	*					110482023
2	5161 - 692 - 116 - XX	LINK/CHOKE	1	*					161692116
3	5390 - 032 - 074 - XX	ARM/PIVOT	1	*	*				390032074
4	5391 - 292 - 052 - XX	SPRING/GOVERNOR	1	*	*				391292052
5	5391 - 802 - 792 - XX	PANEL/CONTROL ASSY	1	*					391802792
6	5131 - 682 - 349 - XX	LEVER	1	*					131682349
7	5131 - 832 - 371 - XX	PLATE	1	*	*				131832371
8	5592 - 262 - 252 - XX	PANEL/CONTROL	1	*	*				592262252
9	5144 - 015 - 385 - AX	NUT	1	*	*				3144015385A
10	5920 - 152 - 120 - XX	NUT	1	*	*				920152120
11	5144 - 015 - 383 - AX	WASHER	1	*	*				3144015383A
12	5920 - 262 - 304 - XX	SPACER	1	*	*				920262304
13	5144 - 015 - 388 - AX	SPRING	1	*	*				3144015388A
14	5921 - 442 - 266 - XX	SPRING	2	*	*				921442266
15	5921 - 442 - 270 - XX	SPRING	1	*	*				921442270
16	5921 - 502 - 227 - XX	BOLT	2	*	*				921502227
17	5214 - B04 - 08X - XX	SCREW M4X8	1	*					214B0408
18	5144 - 015 - 121 - BX	SLEEVE,GOVERNOR	1	*	*				3144015121B
19	5490 - 462 - 098 - XX	ROD/GOVERNOR	1	*	*				490462098
20	5491 - 032 - 124 - XX	ARM/GOVERNOR	1	*	*				491032124
21	5491 - 102 - 076 - XX	GOVERNOR - ASSY	1	*	*				491102076
22	5920 - 022 - 269 - XX	BOLT	1	*	*				920022269
23	5920 - 092 - 308 - XX	SCREW	2	*					920092308
24	5920 - 151 - 193 - XX	NUT	1	*	*				920151193
25	5144 - 015 - 135 - AX	WASHER	1	*	*				3144015135A

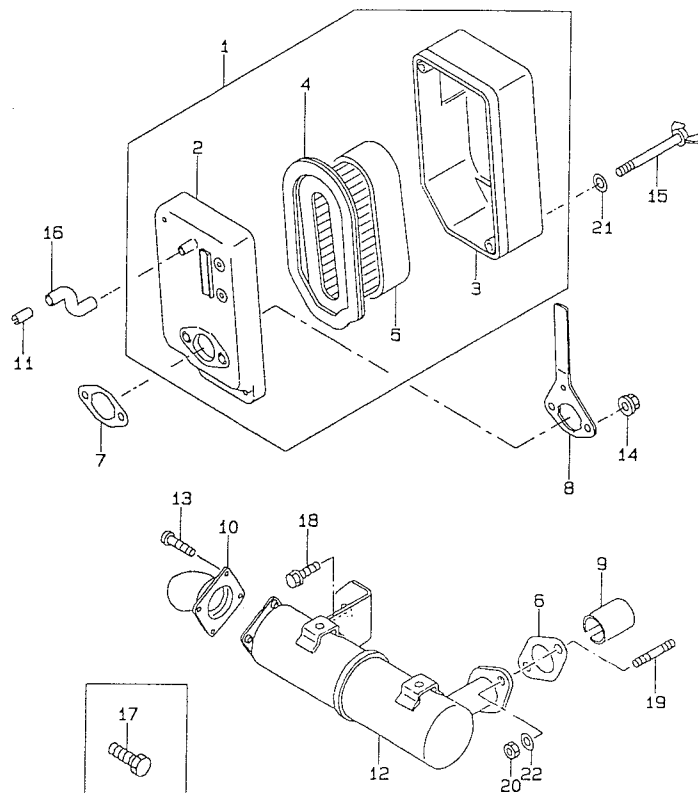
FIG. 9 CARBURETOR SYSTEM



5208-C08

KEY	PART CODE	DESCRIPTION	QTY	TYPE OF MODEL		I T C	C O L	G R P	REMARKS
				FEX91G 3X	FEX91G 4X				
1	5110 - 602 - 051 - XX	GASKET/CARBURETOR	3	*	*				110602051
2	5150 - 032 - 336 - XX	CARBURETOR ASSY	1	*					150032336
3	5110 - 092 - 919 - XX	GASKET	1	*	*				110092919
4	5161 - 832 - 001 - XX	FLOAT ASSY	1	*	*				161832001
5	5161 - 842 - 002 - XX	CHAMBER FLOAT ASSY	1	*	*				161842002
6	5230 - 132 - 053 - XX	SCREW ASSY	1	*	*				230132053
7	5161 - 852 - 012 - XX	VALVE/THROTTLE ASSY	1	*	*				161852012
8	5161 - 862 - 012 - XX	VALVE/CHOKE ASSY	1	*	*				161862012
9	5230 - 132 - 054 - XX	SCREW ASSY	1	*	*				230132054
10	5230 - 132 - 055 - XX	SCREW ASSY	1	*	*				230132055
11	5491 - 212 - 163 - XX	NOZZLE/MAIN	1	*	*				491212163
12	5920 - 632 - 208 - XX	JET/MAIN	1	*	*				920632208
13	5920 - 642 - 092 - XX	JET/PILOT	1	*	*				920642092
14	5921 - 502 - 274 - XX	BOLT	1	*	*				921502274
15	5160 - 602 - 160 - XX	PIPE/INTAKE	1	*	*				160602160
16	5160 - 732 - 156 - XX	INSULATOR	1	*	*				160732156
17	5920 - 151 - 193 - XX	NUT	2	*	*				920151193
18	5951 - 156 - 812 - 00	CLAMP	1	*					395115681200
19	5921 - 902 - 105 - XX	TUBE	1	*					921902105
20	5172 - G06 - 18X - XX	STUD M6X18	2	*	*				172G0618
21	5172 - G06 - 73X - XX	STUD BOLT	2	*	*				172G0673
22	5150 - 032 - 342 - XX	CARBURETOR ASSY	1		*				150032342
23	5161 - 862 - 011 - XX	VALVE/CHOKE ASSY	1		*				161862011

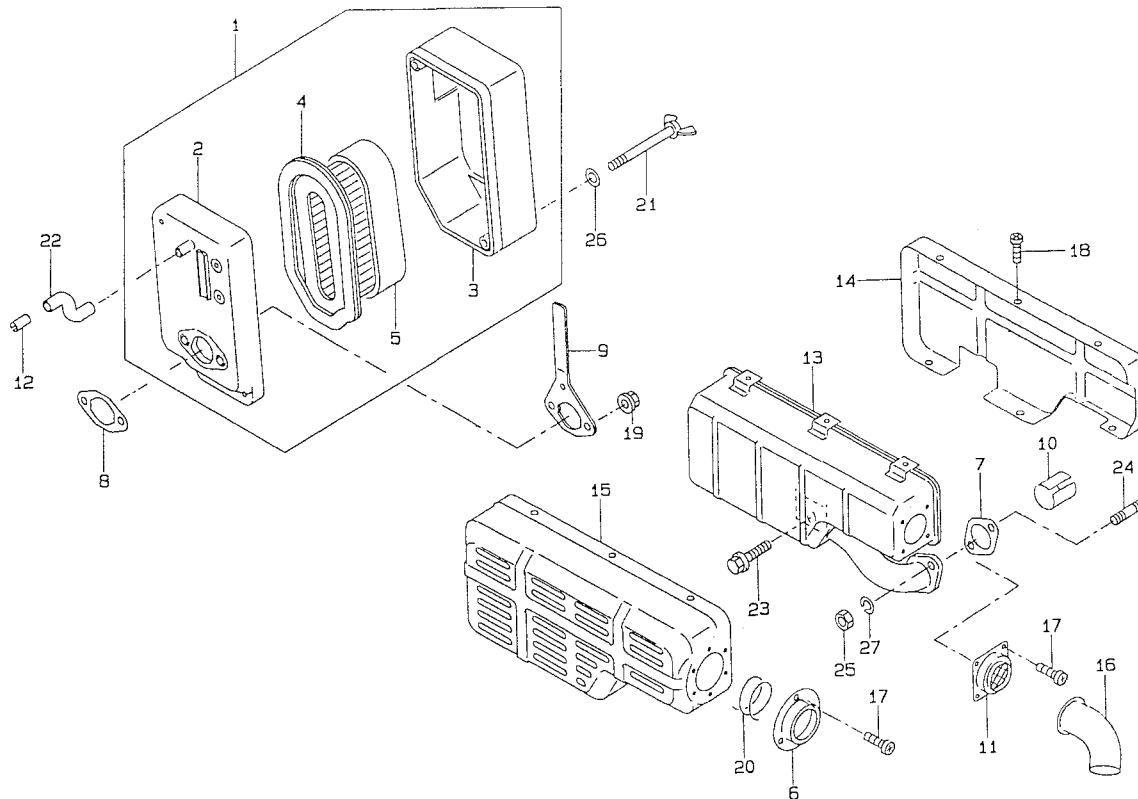
FIG. 10 AIR FILTER/MUFFLER SYSTEM (1)



5208-009A

KEY	PART CODE	DESCRIPTION	QTY	TYPE OF MODEL		I T C	C O L	G R P	REMARKS
				FEX91G 3X	FEX91G 4X				
1	5110-102-459-XX	FILTER ASSY AIR	1	*					110102459
2	5110-112-241-XX	CASE/AIR FILTER	1	*					110112241
3	5110-122-325-XX	CAP,AIR FILTER	1	*					110122325
4	5110-132-132-XX	ELEMENT/AIR FILTER	1	*					110132132
5	5110-132-133-XX	ELEMENT/AIR FILTER	1	*					110132133
6	5110-602-037-XX	GASKET/MUFFLER	1	*					110602037
7	5110-602-049-XX	GASKET/AIR FILTER	1	*					110602049
8	5131-832-527-XX	PLATE	1	*					131832527
9	5180-492-220-XX	PIPE/EXHAUST	1	*					180492220
10	5180-772-100-9X	ARRESTER SPARK	1	*					1807721009X
11	5144-011-341-AX	PIPE	1	*					3144011341A
12	5490-702-580-9Y	MUFFLER COMP	1	*					4907025809Y
13	5144-053-091-BX	SCREW	4	*					3144053091B
14	5920-151-193-XX	NUT	2	*					920151193
15	5921-502-226-XX	BOLT	2	*					921502226
16	5921-902-043-XX	TUBE	1	*					921902043
17	5110-R06-08X-XX	BOLT M6X8	4	*					110R0608
18	5130-B08-12X-XX	BOLT	1	*					130B0812
19	5171-G06-16X-XX	STUD	2	*					171G0616
20	5311-R06-00X-XX	NUT/M6	2	*					311R0600
21	5411-F05-00X-XX	WASHER	2	*					411F0500
22	5461-F06-00X-XX	WASHER/M6	2	*					461F0600

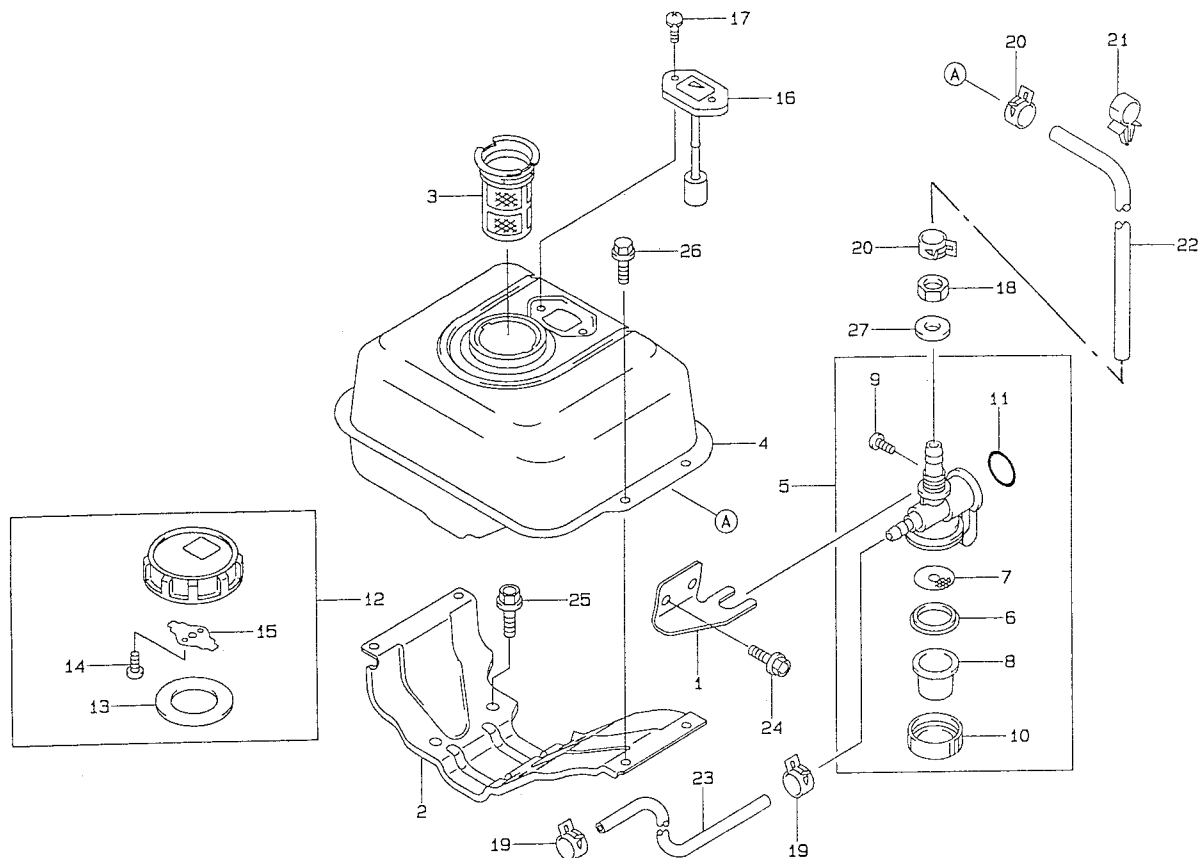
FIG. 11 AIR FILTER/MUFFLER SYSTEM (2)



5208-009B

KEY	PART CODE	DESCRIPTION	QTY	TYPE OF MODEL		I T C	C O L	G R P	REMARKS
				FEX91G 3X	FEX91G 4X				
1	5110 - 102 - 459 - XX	FILTER ASSY AIR	1		*				110102459
2	5110 - 112 - 241 - XX	CASE/AIR FILTER	1		*				110112241
3	5110 - 122 - 325 - XX	CAP,AIR FILTER	1		*				110122325
4	5110 - 132 - 132 - XX	ELEMENT/AIR FILTER	1		*				110132132
5	5110 - 132 - 133 - XX	ELEMENT/AIR FILTER	1		*				110132133
6	5110 - 122 - 304 - XX	CAP	1		*				110122304
7	5110 - 602 - 037 - XX	GASKET/MUFFLER	1		*				110602037
8	5110 - 602 - 049 - XX	GASKET/AIR FILTER	1		*				110602049
9	5131 - 832 - 527 - XX	PLATE	1		*				131832527
10	5180 - 492 - 220 - XX	PIPE/EXHAUST	1		*				180492220
11	5180 - 772 - 096 - XX	ARRESTER/SPARK	1		*				180772096
12	5144 - 011 - 341 - AX	PIPE	1		*				3144011341A
13	5490 - 702 - 585 - XX	MUFFLER COMP	1		*				490702585
14	5491 - 062 - 506 - XX	COVER/MUFFLER	1		*				491062506
15	5491 - 062 - 509 - XX	COVER/MUFFLER	1		*				491062509
16	5591 - 562 - 242 - XX	PIPE/TAIL	1		*				591562242
17	5920 - 092 - 307 - XX	SCREW	7		*				920092307
18	5920 - 092 - 322 - XX	SCREW	6		*				920092322
19	5920 - 151 - 193 - XX	NUT	2		*				920151193
20	5921 - 442 - 297 - XX	SPRING	1		*				921442297
21	5921 - 502 - 226 - XX	BOLT	2		*				921502226
22	5921 - 902 - 043 - XX	TUBE	1		*				921902043
23	5130 - B08 - 16X - XX	BOLT/M8X16	1		*				130B0816
24	5171 - G06 - 16X - XX	STUD	2		*				171G0616
25	5311 - R06 - 00X - XX	NUT/M6	2		*				311R0600

FIG. 13 FUEL FILTER SYSTEM (2)

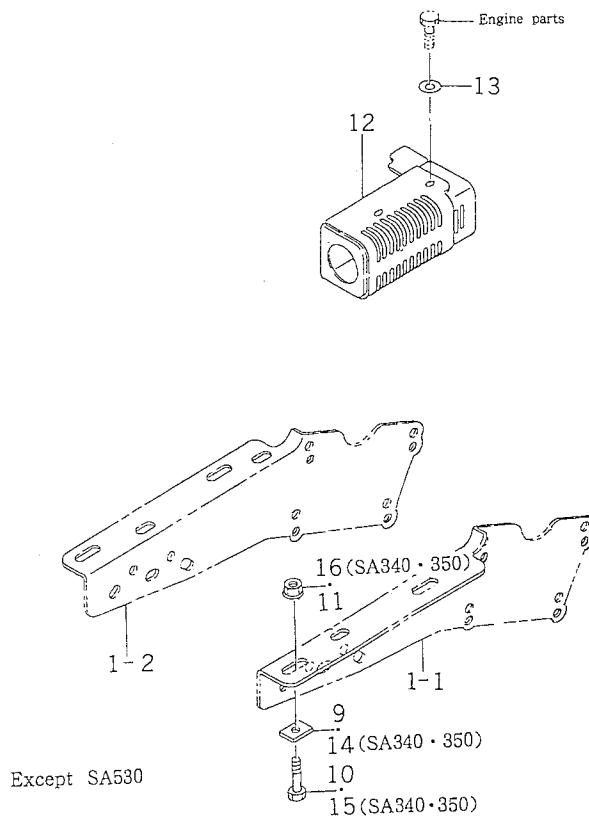
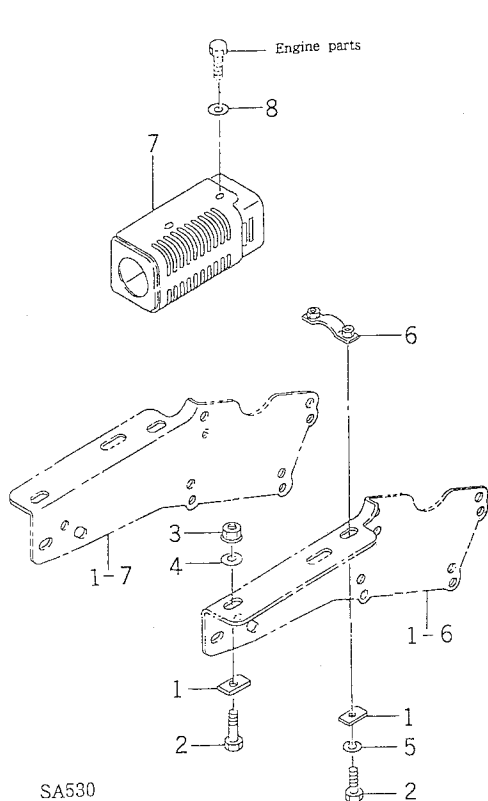


5208-010B

KEY	PART CODE	DESCRIPTION	QTY	TYPE OF MODEL		I T C	C O L	G R P	REMARKS
				FEX91G 3X	FEX91G 4X				
1	5110-472-073-XX	BRACKET	1		*				110472073
2	5205-222-09X-NX	BRACKET/TANK	1		*				320522209XN
3	5158-016-661-FX	FILTER,FUEL	1		*				3158016661F
4	5510-012-254-XN	FUEL TANK COMP	1		*				510012254XN
5	5510-232-131-XX	TAP ASSY	1		*				510232131
6	5136-506-518-02	GASKET	1		*				313650651802
7	5490-192-095-XX	FILTER/FUEL	1		*				490192095
8	5510-362-063-XX	POT,FILTER	1		*				510362063
9	5136-506-517-00	SCREW	1		*				313650651700
10	5136-506-522-00	NUT,RING	1		*				313650652200
11	5136-506-512-00	O-RING	1		*				313650651200
12	5510-482-055-XX	CAP TANK	1		*				510482055
13	5158-016-643-BX	GASKET	1		*				3158016643B
14	5144-016-732-AX	SCREW	2		*				3144016732A
15	5158-016-644-AX	SPRING	1		*				3158016644A
16	5520-052-072-XX	GAUGE,FUEL	1		*				520052072
17	5158-016-577-AX	SCREW	2		*				3158016577A
18	5136-506-527-00	NUT	1		*				313650652700
19	5117-026-812-AX	CLIP	2		*				3117026812A
20	5166-776-812-AX	CLIP	2		*				3166776812A
21	5921-702-067-XX	CLAMP	1		*				921702067
22	5921-902-095-XX	TUBE/6X10X200	1		*				921902095
23	5921-902-096-XX	TUBE 4X8X160	1		*				921902096
24	5130-B05-08X-XX	BOLT	2		*				130B0508
25	5130-B08-18X-XX	BOLT	4		*				130B0818

CHASSIS

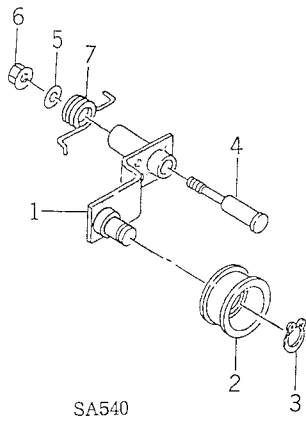
FIG. 3 ENGINE SYSTEM



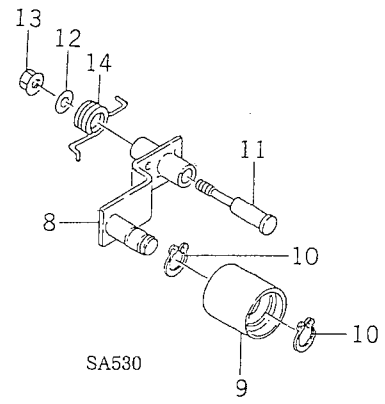
1108-121B

KEY	PART CODE	DESCRIPTION	QTY	TYPE OF MODEL					I T C	C O L	G R P	REMARKS
				SA340	SA350	SA530	SA540	SA550				
1	1108-121-001-00	PLATE/1/16X32	4			*						
2	V201-460-804-00	BOLT/M 8X40	4			*						
3	V363-260-008-00	NUT, LOCK/M8	2			*						
4	V411-260-008-00	WASHER, PL/M 8	2			*						
5	V401-160-008-00	WASHER, SP/M 8	2			*						
6	1108-121-240-00	HOLDER/ENGINE COMP	1			*						
7	1108-121-210-00	COVER/MUFFLER COMP	1			*						
8	V411-260-006-00	WASHER / M6	4			*						
9	1396-121-001-00	PLATE	4				*	*				
10	V201-460-804-00	BOLT/M 8X40	4				*	*				
11	V363-260-008-00	NUT, LOCK/M8	4				*	*				
12	1108-121-250-00	COVER/MUFFLER/3 COMP	1				*	*				
13	V411-260-006-00	WASHER / M6	4				*	*				
14	1396-121-001-00	PLATE	4	*	*							
15	V201-460-804-00	BOLT/M 8X40	4	*	*							
16	V363-260-008-00	NUT, LOCK/M8	4	*	*							

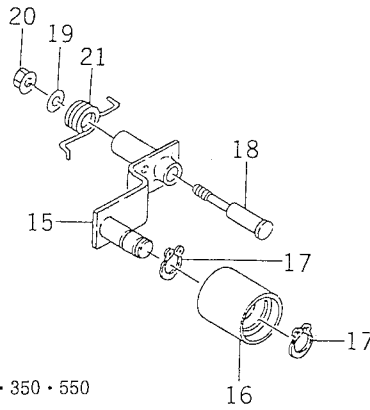
FIG. 8 TENSION SYSTEM



SA540



SA530

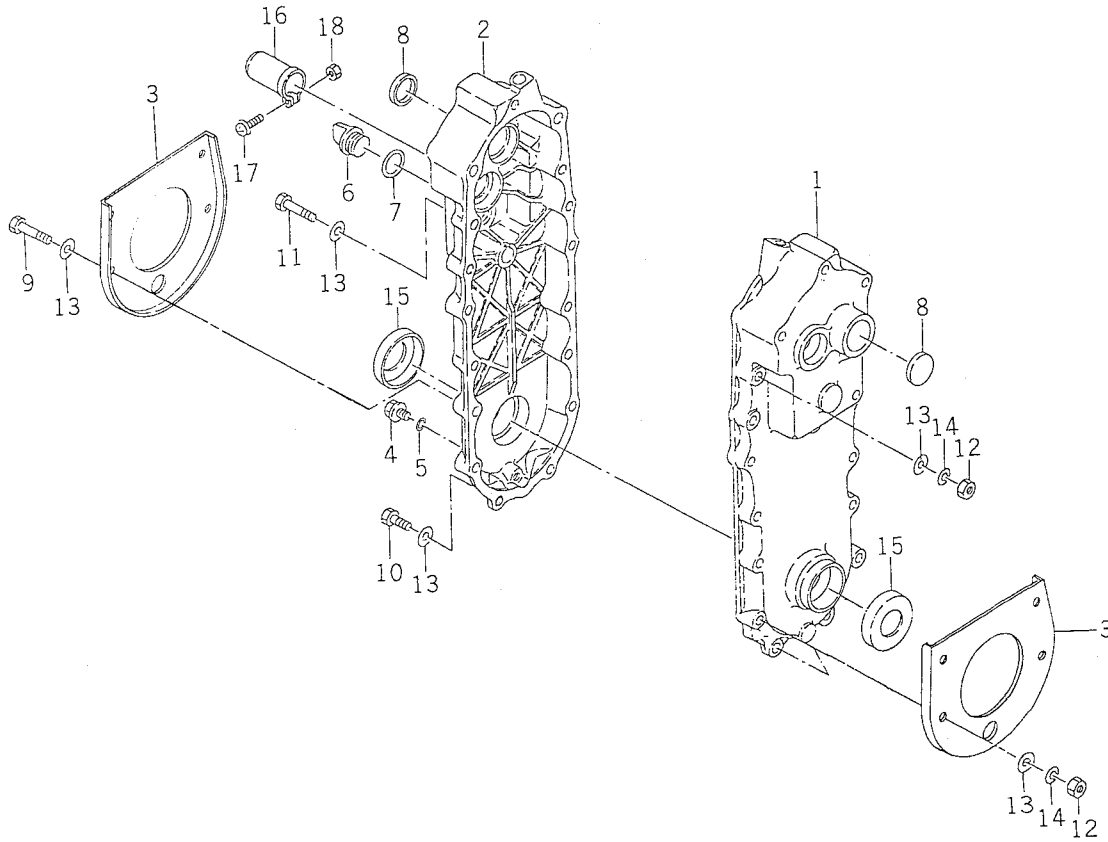


SA340 • 350 • 550

1108-202

KEY	PART CODE	DESCRIPTION	QTY	TYPE OF MODEL					I T C	C O L	G R P	REMARKS
				SA340	SA350	SA530	SA540	SA550				
1	1108-202-200-10	ARM/TENSION/A COMP	1				*					
2	3737-313-005-00	PULLEY, TENSION/45AS	1				*					
3	V704-140-015-00	RING, SNAP/15 C	1				*					
4	1108-202-001-00	BOLT/M08X110	1				*					
5	V411-260-008-00	WASHER, PL/M 8	1				*					
6	V363-260-008-00	NUT, LOCK/M8	1				*					
7	1104-202-004-00	SPRING/HT024	1				*					
8	1108-202-210-10	ARM/TENSION/B COMP	1			*						
9	1108-202-220-00	PULLEY/43X44 ASSY	1			*						
10	V704-140-015-00	RING, SNAP/15 C	2			*						
11	1108-202-001-00	BOLT/M08X110	1			*						
12	V411-260-008-00	WASHER, PL/M 8	1			*						
13	V363-260-008-00	NUT, LOCK/M8	1			*						
14	1104-202-004-00	SPRING/HT024	1			*						
15	1108-202-230-10	ARM/TENSION/C	1	*	*			*				
16	1108-202-220-00	PULLEY/43X44 ASSY	1	*	*			*				
17	V704-140-015-00	RING, SNAP/15 C	2	*	*			*				
18	1108-202-001-00	BOLT/M08X110	1	*	*			*				
19	V411-260-008-00	WASHER, PL/M 8	1	*	*			*				
20	V363-260-008-00	NUT, LOCK/M8	1	*	*			*				
21	1104-202-004-00	SPRING/HT024	1	*	*			*				

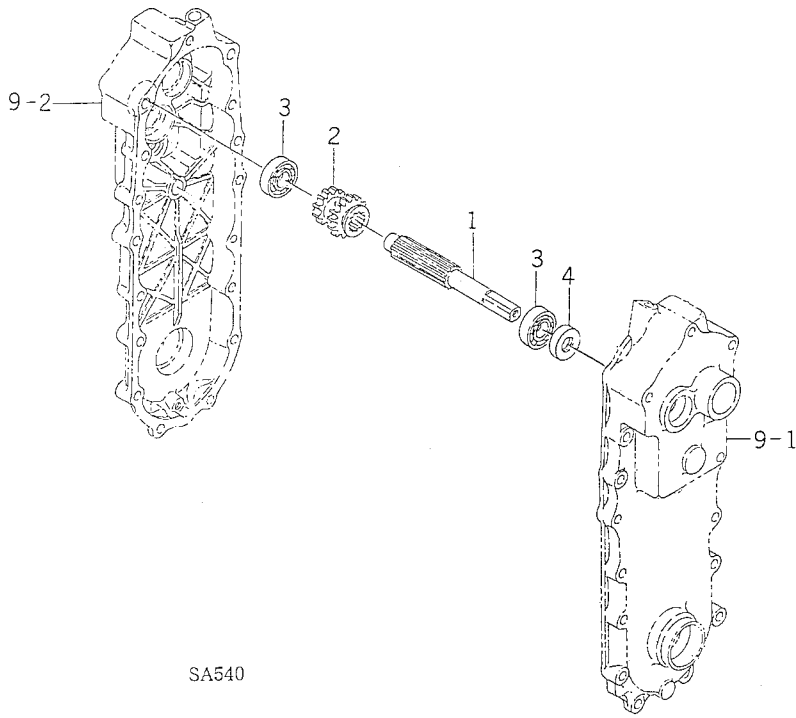
FIG. 10 CASE (TRANSMISSION/33) SYSTEM (SA350, 550 TYPE)



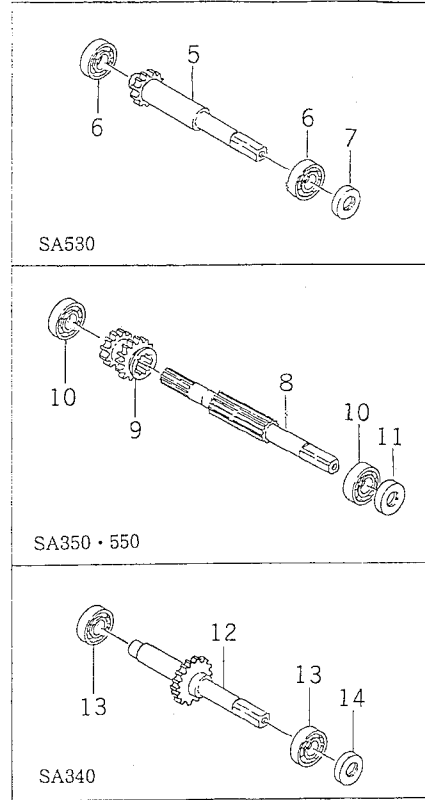
1108-216A

KEY	PART CODE	DESCRIPTION	QTY	TYPE OF MODEL					I T C	C O L	G R P	REMARKS
				SA340	SA350	SA530	SA540	SA550				
1	1108-216-001-00	CASE/TRANSMISSION/LH	1		*			*				
2	1108-216-002-00	CASE/TRANSMISSION/RH	1		*			*				
3	1108-216-006-00	COVER/CASE	2		*			*				
4	1105-216-005-00	BOLT	1		*			*				
5	V720-101-900-80	O-RING/P 8	1		*			*				
6	1337-216-012-00	PLUG, OIL	1		*			*				
7	V720-102-401-80	O-RING/P18	1		*			*				
8	3737-234-005-00	CAP/32	2		*			*				
9	V201-260-805-00	BOLT/M 8X50	4		*			*				
10	V201-260-803-00	BOLT/M 8X30	2		*			*				
11	V201-260-805-50	BOLT/M 8X55	1		*			*				
12	V304-260-008-00	NUT/M 8	7		*			*				
13	V411-260-008-00	WASHER, PL/M 8	6		*			*				
14	V401-160-008-00	WASHER, SP/M 8	7		*			*				
15	1108-216-003-00	GUARD	2		*			*				
16	1103-216-002-10	SHAFTCAP/42X50	1		*			*				
17	V120-365-002-50	SCREW/M5X25	1		*			*				
18	V301-260-005-00	NUT/M 5	1		*			*				

FIG. 12 MAIN SHAFT SYSTEM



SA540



SA530

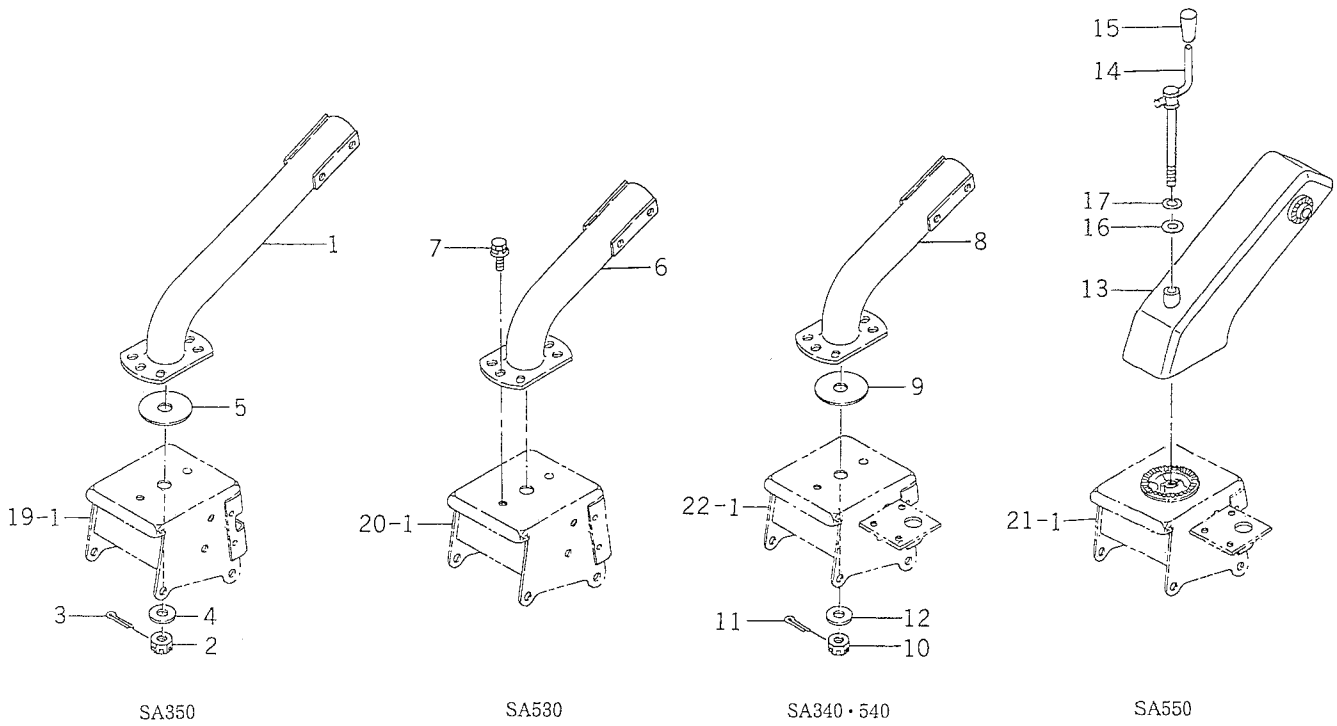
SA350 - 550

SA340

11C8-217

KEY	PART CODE	DESCRIPTION	QTY	TYPE OF MODEL					I T C	C O L	G R P	REMARKS
				SA340	SA350	SA530	SA540	SA550				
1	1108-217-001-00	SHAFT/MAIN/A	1				*					
2	1108-217-002-00	GEAR/SPUR/14-18	1				*					
3	V600-110-620-20	BEARING, RB/6202	2				*					
4	V740-115-320-70	SEAL, OIL/SC15327	1				*					
5	1108-217-004-00	SHAFT/MAIN/B	1			*						
6	V600-110-620-20	BEARING, RB/6202	2			*						
7	V740-115-320-70	SEAL, OIL/SC15327	1			*						
8	1108-217-003-00	SHAFT/MAIN/C	1		*							
9	1108-217-005-10	GEAR/SPUR/13-20	1		*							
10	V600-110-620-20	BEARING, RB/6202	2		*							
11	V740-115-320-70	SEAL, OIL/SC15327	2		*							
12	1108-217-200-00	SHAFT/MAIN/D COMP	1	*								
13	V600-110-620-20	BEARING, RB/6202	2	*								
14	V740-115-320-70	SEAL, OIL/SC15327	1	*								

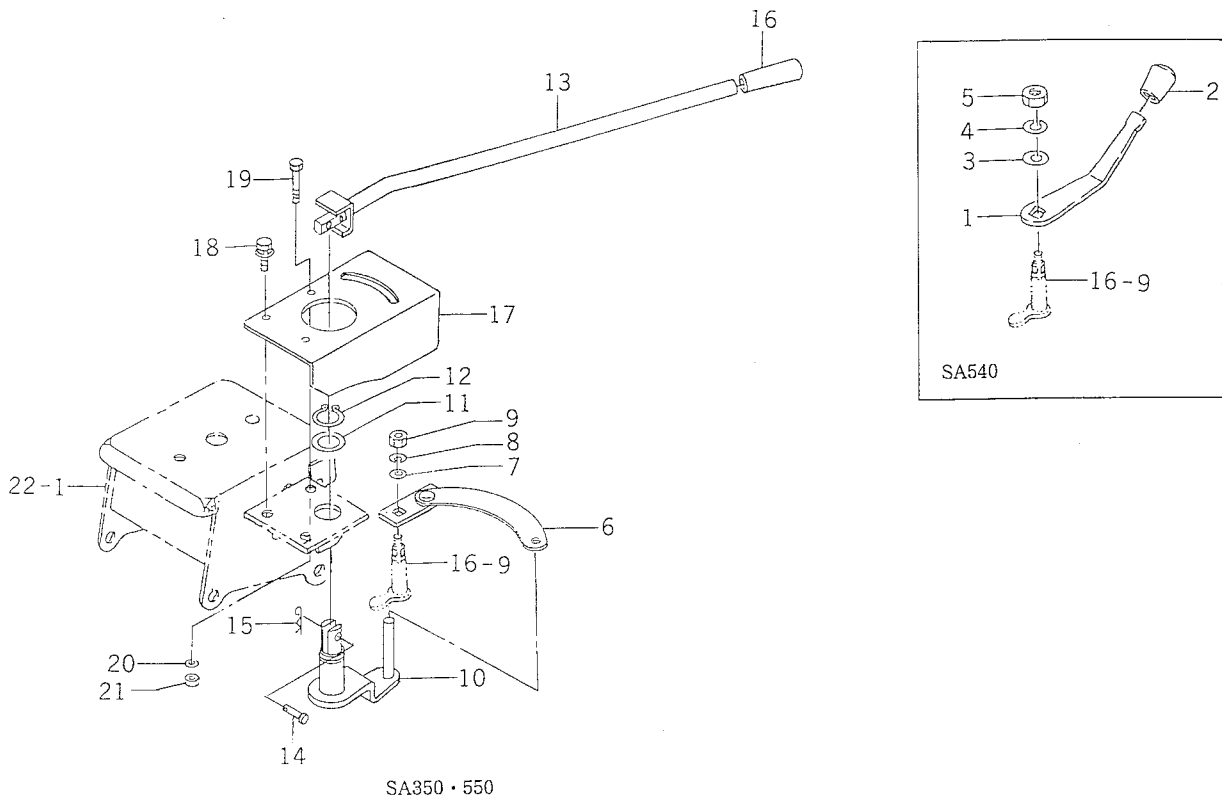
FIG. 18 FRAME (HANDLE) SYSTEM



1108-301

KEY	PART CODE	DESCRIPTION	QTY	TYPE OF MODEL					I T C	C O L	G R P	REMARKS
				SA340	SA350	SA530	SA540	SA550				
1	1108-301-210-20	FRAME/HANDLE/30 COMP	1		*							
2	V327-262-112-00	NUT, CASTTLE/M12X1.25	1		*							
3	V500-162-502-00	PIN, SPLIT/2.5X20	1		*							
4	3621-702-003-00	WASHER, PULLEY	1		*							
5	1108-301-001-00	WASHER/16X62X02	1		*							
6	1108-301-200-10	FRAME/HANDLE/20 COMP	1			*						
7	V211-360-802-00	BOLT (SP) M8X20	2			*						
8	1108-301-230-00	FRAME/HANDLE/E COMP	1	*			*					
9	1108-301-001-00	WASHER/16X62X02	1	*			*					
10	V327-262-112-00	NUT, CASTTLE/M12X1.25	1	*			*					
11	V500-162-502-00	PIN, SPLIT/2.5X20	1	*			*					
12	3621-702-003-00	WASHER, PULLEY	1	*			*					
13	1103-301-210-10	FRAME/HANDLE COMP	1					*				
14	1103-301-220-00	SCREW, LOCK, COMP.	1					*				
15	1432-117-001-00	KNOB, LEVER	1					*				
16	V411-260-014-00	WASHER, PL/M14	1					*				
17	V401-160-014-00	WASHER, SP/M14	1					*				

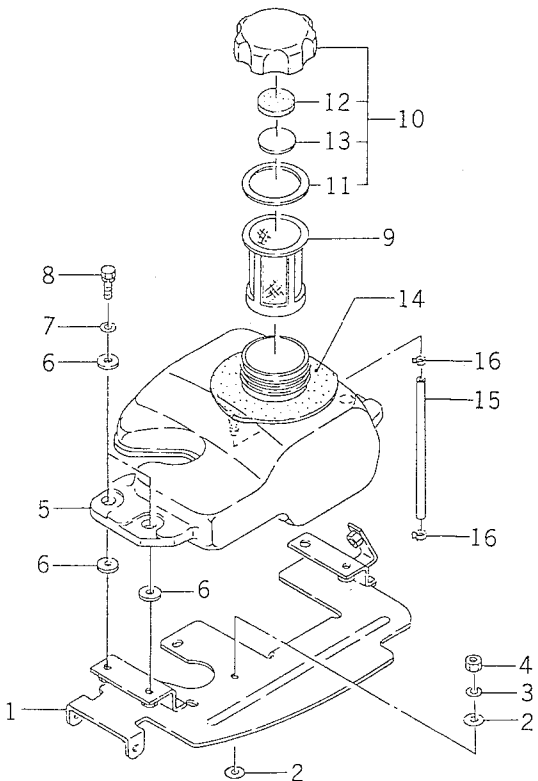
FIG. 28 SHIFT(CHANGE), ARM SYSTEM(SA350, 540, 550 TYPE)



1108-410A

KEY	PART CODE	DESCRIPTION	QTY	TYPE OF MODEL					I T C	C O L	G R P	REMARKS
				SA340	SA350	SA530	SA540	SA550				
1	1108-410-003-00	PLATE/SHIFT	1				*					
2	1352-404-007-00	KNOB, LEVER/24	1				*					
3	V411-260-008-00	WASHER, PL/M 8	1				*					
4	V401-160-008-00	WASHER, SP/M 8	1				*					
5	V304-260-008-00	NUT/M 8	1				*					
6	1108-410-210-00	ARM/SHIFT/A COMP	1		*			*				
7	V411-260-008-00	WASHER, PL/M 8	1		*			*				
8	V401-160-008-00	WASHER, SP/M 8	1		*			*				
9	V304-260-008-00	NUT/M 8	1		*			*				
10	1108-410-220-00	ARM/SHIFT/B COMP	1		*			*				
11	V411-260-020-00	WASHER/M20	1		*			*				
12	V704-140-020-00	RING, SNAP/20C	1		*			*				
13	1108-410-230-00	LEVER/SHIFT/E COMP	1		*			*				
14	1480-504-002-00	PIN (5X26)	1		*			*				
15	2130-601-018-00	PIN, SNAP/6	1		*			*				
16	1432-117-001-00	KNOB, LEVER	1		*			*				
17	1108-410-004-00	GUIDE/SHIFT	1		*			*				
18	V211-360-801-60	BOLT, SEMS (SP)	2		*			*				
19	V201-260-807-00	BOLT/M 8X70	1		*			*				
20	V411-260-008-00	WASHER, PL/M 8	1		*			*				
21	V304-260-008-00	NUT/M 8	1		*			*				

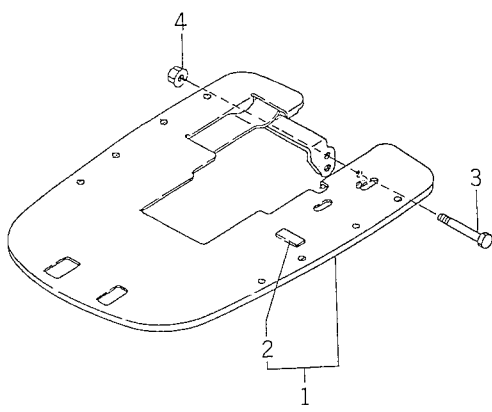
FIG. 31 FUEL TANK (20) SYSTEM (SA530 TYPE)



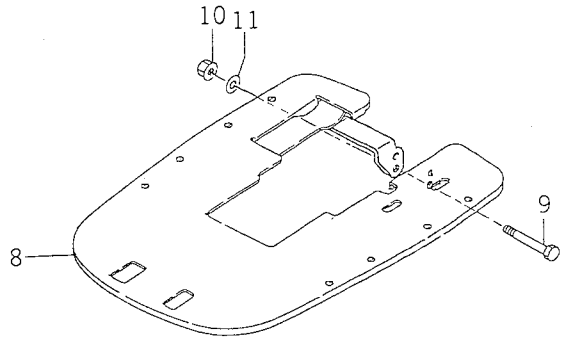
1108-606A

KEY	PART CODE	DESCRIPTION	QTY	TYPE OF MODEL					I T C	C O L	G R P	REMARKS
				SA340	SA350	SA530	SA540	SA550				
1	1108-606-220-00	BRACKET/TANK COMP	1			*						
2	3218-402-114-00	WASHER	8			*						
3	V401-160-006-00	WASHER, SP/M 6	4			*						
4	V301-260-006-00	NUT/M 6	4			*						
5	1108-606-001-10	TANK/FUEL/20	1			*						
6	1396-606-002-00	SPACER	6			*						
7	3218-402-114-00	WASHER	3			*						
8	V210-260-602-50	BOLT, S/M6X25	3			*						
9	3555-601-008-00	STRAINER	1			*						
10	1396-606-210-10	CAP/G55	1			*						
11	1396-606-212-00	GASKET/CAP TANK	1			*						
12	1396-606-213-00	BREATHER/CAP TANK	1			*						
13	1396-606-003-00	PLATE	1			*						
14	1396-601-001-00	INSULATOR	1			*						
15	1108-606-002-00	HOSE/FUEL	1			*						
16	3759-164-005-00	CLIP, HOSE/D=11	2			*						

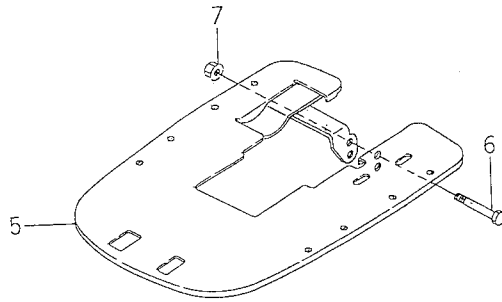
FIG. 36 FENDER SYSTEM



SA340 - 540



SA350 - 550

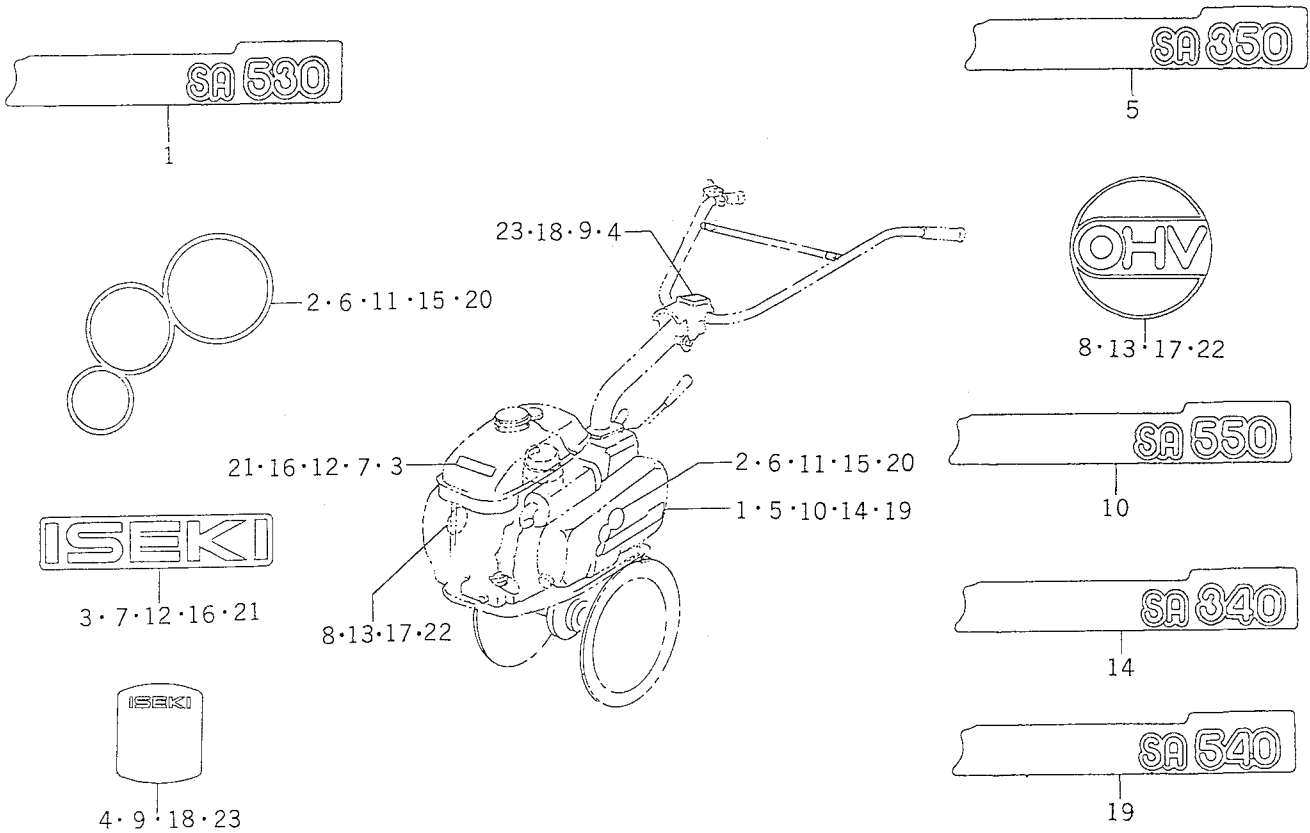


SA530

1108-616

KEY	PART CODE	DESCRIPTION	QTY	TYPE OF MODEL					I T C	C O L	G R P	REMARKS
				SA340	SA350	SA530	SA540	SA550				
1	1108-616-200-10	FENDER/30 COMP	1	*			*					
2	1392-601-203-00	RUBBER, CUSHION	1	*			*					
3	V201-260-806-00	BOLT/M 8X60	1	*			*					
4	V363-260-008-00	NUT, LOCK/M8	1	*			*					
5	1108-616-210-10	FENDER/20 COMP	1			*						
6	V201-260-806-00	BOLT/M 8X60	1			*						
7	V363-260-008-00	NUT, LOCK/M8	1			*						
8	1108-616-230-00	FENDER/E COMP	1		*			*				
9	V201-260-806-50	BOLT/M 8X65	1		*			*				
10	V363-260-008-00	NUT, LOCK/M8	1		*			*				
11	V411-260-008-00	WASHER, PL/M 8	1		*			*				

FIG. 42 LABEL (MODEL) SYSTEM



1108-901G

KEY	PART CODE	DESCRIPTION	QTY	TYPE OF MODEL					I T C	C O L	G R P	REMARKS
				SA340	SA350	SA530	SA540	SA550				
1	1108-901-018-00	ORNAMENT/SA530	1			*						
2	1108-901-004-00	MOLDING	1			*						
3	1108-901-003-10	ORNAMENT/ISEKI	1			*						
4	1108-901-028-00	ORNAMENT/COVER	1			*						
5	1108-901-021-00	ORNAMENT/SA350	1		*							
6	1108-901-004-00	MOLDING	1		*							
7	1108-901-003-10	ORNAMENT/ISEKI	1		*							
8	1107-902-002-10	ORNAMENT/OHV	1		*							
9	1108-901-028-00	ORNAMENT/COVER	1		*							
10	1108-901-023-00	ORNAMENT/SA550	1					*				
11	1108-901-004-00	MOLDING	1					*				
12	1108-901-003-10	ORNAMENT/ISEKI	1					*				
13	1107-902-002-10	ORNAMENT/OHV	1					*				
14	1108-901-025-00	ORNAMENT/SA340	1	*								
15	1108-901-004-00	MOLDING	1	*								
16	1108-901-003-10	ORNAMENT/ISEKI	1	*								
17	1107-902-002-10	ORNAMENT/OHV	1	*								
18	1108-901-028-00	ORNAMENT/COVER	1	*								
19	1108-901-027-00	ORNAMENT/SA540	1				*					
20	1108-901-004-00	MOLDING	1				*					
21	1108-901-003-10	ORNAMENT/ISEKI	1				*					
22	1107-902-002-10	ORNAMENT/OHV	1				*					
23	1108-901-028-00	ORNAMENT/COVER	1				*					

PART CODE	REF . NO	PART CODE	REF . NO	PART CODE	REF . NO	PART CODE	REF . NO
5110-R06-08X-XX	9 22	5145-V13-453-AX	11 7	5151-200-945-00	13 3	5491-206-006-XX	1 8
5110-042-115-XX	1 2	5145-003-020-AX	2 4	5154-706-133-AX	8 8	5510-232-131-XX	10 1
5110-092-432-XX	4 1	5145-003-030-AX	2 5	5154-706-137-AX	8 19	5510-362-063-XX	10 4
5110-102-441-9H	9 3	5145-003-131-AX	2 6	5155-047-447-AX	9 2	5511-A04-25X-XX	2 16
5110-112-235-XX	9 4	5145-003-132-AX	2 7	5155-996-112-AX	8 23	5551-A06-12X-XX	1 18
5110-122-326-9H	9 5	5145-011-111-AX	1 1	5158-256-116-AX	8 25	5554-A06-00X-XX	7 22
5110-442-067-XX	6 1	5145-011-932-AX	5 2	5160-202-078-XX	8 7	5560-312-262-XX	9 6
5110-602-024-XX	9 9	5145-012-110-AX	3 1	5160-602-170-XX	9 12	5560-312-458-XX	12 1
5110-602-100-XX	9 10	5145-012-113-AX	3 5	5160-732-156-XX	8 29	5590-412-080-XX	5 4
5110-602-101-XX	1 3	5145-012-116-AX	3 3	5161-152-069-XX	4 2	5590-662-617-XJ	5 5
5110-602-102-XX	1 4	5145-012-211-AX	3 4	5161-692-110-XX	7 8	5670-B20-15X-XX	4 4
5110-602-103-XX	8 1	5145-013-111-AX	2 1	5171-G06-16X-XX	9 23	5702-A07-100-0X	9 26
5110-602-104-XX	8 2	5145-013-121-AX	2 2	5171-G06-22X-XX	8 32	5705-A04-100-0X	10 13
5120-052-072-XX	3 2	5145-013-122-AX	2 13	5171-G06-35X-XX	8 33	5920-022-269-XX	7 14
5127-506-116-00	8 24	5145-013-240-AX	2 9	5180-B06-18X-XX	2 15	5920-022-283-XX	5 6
5127-691-533-BX	9 16	5145-013-245-AX	2 10	5186-B06-10X-XX	5 7	5920-092-322-XX	9 18
5130-D10-14X-XX	4 3	5145-013-248-AX	2 12		7 21	5920-151-193-XX	7 15
5130-372-265-XX	2 6	5145-013-249-AX	2 11	5186-B06-12X-XX	1 14		8 31
5131-B05-10X-XX	6 13	5145-013-447-AX	11 8	5186-B06-22X-XX	1 15	5920-152-120-XX	7 9
5131-B05-20X-XX	6 14	5145-014-211-BX	1 6	5186-G06-40X-XX	1 16	5920-222-248-XX	11 9
5131-226-116-00	8 9		1 9	5209-921-49X-XX	11 4	5920-372-100-XX	10 10
5131-832-485-XX	9 11	5145-014-281-AX	1 11	5211-182-054-XX	3 7	5920-372-165-XX	6 7
5131-832-487-XX	8 27	5145-015-110-AX	7 13	5211-602-054-XX	6 3	5920-382-003-XX	6 8
5132-362-075-XX	7 2	5145-015-314-CX	7 18	5211-712-172-XX	6 4	5920-432-105-XX	3 8
5136-506-512-00	10 7	5145-031-312-AX	9 7	5211-942-278-XX	6 5	5920-492-097-XX	9 20
5136-506-517-00	10 5	5145-031-313-AX	9 8	5214-B04-08X-XX	7 6	5920-592-156-XX	6 9
5136-506-518-02	10 2	5145-716-147-AX	8 18	5214-B04-10X-XX	8 26	5920-592-224-XX	10 11
5136-506-522-00	10 6	5145-783-041-AX	11 6	5214-B04-20X-XX	7 7	5920-632-234-XX	8 22
5136-506-527-00	10 8	5145-873-337-BX	7 1	5234-B05-14X-XX	6 15	5920-702-056-XX	6 10
5136-791-532-00	9 19	5145-951-332-AX	8 1	5241-B05-10X-XX	5 8	5920-712-113-XX	6 12
	10 9	5145-954-165-AX	1 10	5260-112-129-XX	6 6	5920-712-126-XX	7 17
5140-902-026-XJ	5 1	5145-956-122-AX	8 11	5311-B06-00X-XX	9 24	5921-102-098-XX	13 2
5144-AA8-465-AX	6 2	5145-956-126-AX	8 12	5315-G12-00X-XX	6 10	5921-432-193-XX	1 12
5144-011-341-AX	8 13	5145-956-129-AX	8 16	5390-032-065-XX	7 9	5921-442-266-XX	7 5
5144-013-444-AX	11 10	5145-956-134-AX	8 20	5410-B06-00X-XX	1 17	5921-502-120-XX	9 21
5144-013-445-AX	11 2	5145-965-317-AX	7 4		9 25	5921-502-211-XX	11 14
5144-013-446-AX	11 11	5145-966-102-AX	8 15	5410-B10-00X-XX	10 12	5921-502-239-XX	1 13
5144-013-449-AX	11 3	5145-966-146-AX	8 17	5411-B12-00X-XX	6 17	5922-002-029-XX	7 20
5144-015-121-BX	7 10	5145-985-010-BX	2 3	5460-752-059-XX	11 5	5922-002-032-XX	2 14
5144-015-135-AX	7 16	5145-986-128-AX	8 5	5490-156-027-XX	1 5		
5144-018-164-BX	6 11	5145-985-211-BX	7 12	5490-192-095-XX	10 3		
5144-060-931-AX	12 1	5145-995-221-CX	7 11	5490-702-629-9V	9 14		
5144-131-316-AX	9 17	5145-995-232-CX	7 19	5490-802-139-XX	11 13		
5144-996-114-AX	8 6	5145-996-101-AX	8 10	5490-882-421-XX	11 1		
5144-996-127-AX	8 21	5145-996-139-AX	8 14	5490-892-197-XJ	5 3		
5144-996-142-AX	8 13	5145-996-161-AX	8 30	5491-072-134-9X	9 15		
5144-996-159-AX	8 4	5145-996-182-CX	8 28	5491-082-090-XX	1 7		
5145-V13-452-AX	11 12	5150-082-331-XX	8 3	5491-182-052-XX	3 6		

PART CODE	REF. NO	PART CODE	REF. NO	PART CODE	REF. NO	PART CODE	REF. NO
5920-252-252-XX	8	5921-807-226-XX	10				
5601-462-04X-XX	1		11				
5920-022-268-XX	8	5921-802-227-XX	8				
5920-022-283-XX	5	5921-802-274-XX	9				
	6	5921-702-043-XX	12				
5920-092-166-XX	7	5921-702-062-XX	7				
5920-092-307-XX	11	5921-702-067-XX	13				
5920-092-308-XX	4	5921-802-043-XX	10				
	8		11				
5920-092-311-XX	14	5921-802-085-XX	13				
5920-092-322-XX	11	5921-802-096-XX	12				
5920-151-193-XX	5		13				
	8	5921-802-105-XX	9				
5920-152-126-XX	9	5921-802-158-XX	12				
5920-152-240-XX	3	5922-001-029-XX	8				
5920-152-253-XX	3	5922-001-835-XX	5				
5920-222-001-XX	3	5921-110-312-00	9				
5920-262-304-XX	8		19				
5920-332-160-XX	14		12				
5920-360-03X-XX	2		28				
5920-372-165-XX	7		8				
	11		7				
5920-372-171-XX	7		5				
5920-382-077-XX	7		9				
5920-382-093-XX	2		12				
5920-431-037-XX	1		13				
5920-432-122-XX	3		12				
5920-432-130-XX	3		18				
5920-552-064-XX	4		9				
5920-592-156-XX	7						
5920-632-208-XX	9						
5920-642-092-XX	9						
5920-662-203-XX	4						
5920-701-162-XX	7						
	8						
5920-712-126-XX	8						
5920-712-135-XX	7						
5921-072-057-XX	16						
5921-102-098-XX	16						
5921-442-049-XX	3						
5921-442-177-XX	14						
5921-442-266-XX	8						
5921-442-270-XX	8						
5921-442-272-XX	14						
5921-442-297-XX	11						
5921-502-122-XX	2						
5921-502-198-XX	3						

PART CODE	REF . NO	PART CODE	REF . NO	PART CODE	REF . NO	PART CODE	REF . NO
V120-365-002-50	10 17	V210-360-601-60	30 12	V363-260-008-00	22 6	V411-260-008-00	22 5
V120-366-001-60	23 10		32 11		23 14		22 14
V201-260-004-00	6 4		33 8		24 9		25 3
V201-260-801-60	32 3		35 9		36 4		26 3
V201-260-803-00	9 10	V210-360-602-00	29 5		36 7		28 3
	10 10	V211-260-801-60	30 10		36 10		28 7
	11 10	V211-360-801-60	28 18		37 6		28 20
V201-260-805-00	9 9		30 11	V363-260-010-00	19 4		30 13
	10 9		32 6		20 4		32 4
	11 9		33 4		21 3		36 11
V201-260-805-50	1 3		34 4		22 3		37 5
	1 8		35 4	V401-160-006-00	31 3	V411-260-010-00	19 3
	1 12	V211-360-802-00	18 7	V401-160-008-00	3 5		20 3
	2 2		23 13		9 14		21 7
	9 11		23 15		10 14		22 7
	10 11		24 8		11 14		24 5
	11 11	V301-260-005-00	10 18		19 15		32 9
V201-260-806-00	4 2	V301-260-006-00	29 7		22 15		34 7
	4 6		31 4		28 4		35 7
	36 3	V304-260-008-00	2 11		28 8	V411-260-014-00	18 16
	36 6		9 12	V401-160-010-00	24 4	V411-260-020-00	28 11
V201-260-806-50	36 9		10 12		32 8	V500-162-501-00	26 9
	37 4		11 12		33 6	V500-162-501-50	2 8
V201-260-807-00	28 19		28 5		34 6	V500-162-502-00	18 3
V201-260-811-00	19 13		28 9		35 6		18 11
	22 13		28 21	V401-160-014-00	18 17		23 7
V201-260-812-00	19 5	V304-260-010-00	5 6	V411-260-006-00	3 8	V530-240-502-80	19 11
	20 5	V305-260-010-00	6 5		3 13		22 11
	21 4	V305-260-012-00	41 4		25 10	V580-140-302-00	14 2
	22 4	V327-262-112-00	18 2		29 6		14 7
V201-261-004-50	6 3		18 10	V411-260-008-00	1 5	V600-110-600-50	15 2
V201-261-005-00	5 5	V328-262-110-00	23 8		1 10	V600-110-620-20	12 3
V201-261-012-00	19 2	V361-260-006-00	37 3		1 14		12 6
	20 2	V363-260-008-00	1 4		2 3		12 10
	33 5		1 9		2 9		12 13
V201-261-013-00	21 2		1 13		3 4		13 2
	22 2		2 4		4 4		13 4
	32 7		3 3		4 8		13 6
	34 5		3 11		8 5		13 8
	35 5		3 16		8 12		16 2
V201-261-014-00	24 3		4 3		8 19		16 4
V201-460-804-00	3 2		4 7		9 13	V680-200-001-00	16 7
	3 10		8 6		10 13	V704-140-015-00	8 3
	3 15		8 13		11 13		8 10
V210-260-602-00	7 4		8 20		19 6		8 17
	7 9		19 7		19 14	V704-140-020-00	28 12
	7 14		20 7		20 6	V720-101-900-80	9 5
V210-260-602-50	31 8		21 6		21 5		10 5

PART CODE	REF . NO	PART CODE	REF . NO	PART CODE	REF . NO	PART CODE	REF . NO
V720-101-900-80	11 5	1108-101-002-10	1 2	1108-217-005-10	12 9	1108-410-210-00	28 6
V720-101-900-90	16 10	1108-101-003-10	1 6	1108-217-200-00	12 12	1108-410-220-00	28 10
V720-102-401-80	9 7	1108-101-004-10	1 7	1108-218-200-00	13 1	1108-410-230-00	28 13
	10 7	1108-111-230-00	1 11	1108-218-210-10	13 3	1108-601-001-10	29 1
	11 7	1108-112-210-00	2 1	1108-218-220-00	13 5	1108-601-002-20	29 3
V740-115-320-70	12 4	1108-112-220-00	2 5	1108-218-230-00	13 7	1108-606-001-10	31 5
	12 7	1108-121-001-00	3 1	1108-219-001-10	14 3	1108-606-002-00	31 15
	12 11	1108-121-210-00	3 7		14 8	1108-606-200-10	30 1
	12 14	1108-121-240-00	3 6	1108-219-002-00	14 5	1108-606-210-00	30 8
V742-125-400-50	15 4	1108-121-250-00	3 12		14 10	1108-606-220-00	31 1
V744-125-400-70	15 3	1108-130-230-10	4 1	1108-219-003-00	14 4	1108-606-230-10	30 14
W201-260-803-00	2 10	1108-130-240-10	4 5		14 9	1108-611-001-20	32 1
1102-611-006-00	29 2	1108-131-002-00	5 2	1108-219-200-10	14 1		33 1
	29 4	1108-131-240-00	5 1	1108-219-240-10	14 6		34 1
	32 10	1108-131-260-00	6 1	1108-225-230-00	15 1		35 1
	33 7	1108-201-001-00	7 11	1108-226-001-00	16 1	1108-611-003-10	32 2
	34 8	1108-201-003-00	7 15	1108-226-002-00	16 3	1108-611-004-00	33 2
	35 8	1108-201-006-00	7 1	1108-229-001-00	16 5	1108-611-007-00	34 2
1102-718-200-10	39 11	1108-201-007-00	7 2	1108-229-002-20	16 6		35 2
1102-718-210-10	39 12	1108-201-008-00	7 5	1108-229-200-20	16 9	1108-611-200-30	32 5
1103-216-002-10	10 16	1108-201-012-00	7 6	1108-240-001-00	17 1		35 3
1103-301-210-10	18 13	1108-201-013-00	7 10	1108-301-001-00	18 5	1108-611-210-50	33 3
1103-301-220-00	18 14	1108-201-220-00	7 7		18 9	1108-611-230-10	34 3
1103-312-001-00	23 12	1108-201-230-00	7 12	1108-301-200-10	18 6	1108-616-200-10	36 1
	24 7	1108-202-001-00	8 4	1108-301-210-20	18 1	1108-616-210-10	36 5
1103-623-200-00	38 2		8 11	1108-301-230-00	18 8	1108-616-230-00	36 8
1104-202-004-00	8 7		8 18	1108-302-001-00	19 8	1108-617-210-00	37 1
	8 14	1108-202-200-10	8 1		22 8	1108-617-220-00	37 2
	8 21	1108-202-210-10	8 8	1108-302-002-00	19 9	1108-716-290-00	40 1
1105-216-005-00	9 4	1108-202-220-00	8 9		22 9	1108-716-300-00	40 2
	10 4		8 16	1108-302-200-20	19 1	1108-726-200-00	41 1
	11 4	1108-202-230-10	8 15	1108-302-210-00	19 10	1108-726-210-00	41 2
1105-402-211-00	27 4	1108-216-001-00	9 1		22 10	1108-901-003-10	42 3
	27 9		10 1	1108-302-220-20	20 1		42 7
1105-422-210-00	27 3		11 1	1108-302-230-00	22 1		42 12
	27 8	1108-216-002-00	9 2	1108-302-240-00	21 1		42 16
1105-422-212-00	27 5		10 2	1108-311-003-10	23 9		42 21
	27 10	1108-216-003-00	9 15	1108-311-004-10	23 6	1108-901-004-00	42 2
1105-608-004-00	30 6		10 15	1108-311-230-00	23 3		42 6
1105-608-250-00	30 2		11 15	1108-311-240-00	23 1		42 11
1105-608-252-00	30 3	1108-216-004-00	11 2	1108-311-250-00	23 2		42 15
1105-608-253-00	30 4	1108-216-006-00	9 3	1108-311-260-00	24 1		42 20
1105-608-254-00	30 5		10 3	1108-311-270-00	24 2	1108-901-018-00	42 1
1107-902-002-10	42 8		11 3	1108-401-005-00	25 5	1108-901-021-00	42 5
	42 13	1108-217-001-00	12 1	1108-401-006-00	26 6	1108-901-023-00	42 10
	42 17	1108-217-002-00	12 2	1108-402-003-00	27 6	1108-901-025-00	42 14
	42 22	1108-217-003-00	12 8	1108-410-003-00	28 1	1108-901-027-00	42 19
1108-101-001-10	1 1	1108-217-004-00	12 5	1108-410-004-00	28 17	1108-901-028-00	42 4

PART CODE	REF . NO	PART CODE	REF . NO	PART CODE	REF . NO	PART CODE	REF . NO
1108-901-028-00	42 9	1337-216-012-00	10 6	2100-401-001-00	23 11		
	42 18		11 6		24 10		
	42 23	1337-721-002-00	17 6	2130-601-018-00	25 7		
1108-902-008-00	43 10		17 10		26 8		
1108-902-009-00	43 17	1349-716-001-00	39 8		28 15		
1108-902-011-00	43 2	1349-716-002-00	39 9	3218-402-114-00	31 2		
	43 8	1352-106-001-00	41 5		31 7		
	43 13	1352-404-007-00	28 2	3256-702-002-00	32 12		
1108-902-012-00	43 3	1359-403-003-00	25 6		33 9		
	43 14		26 7		34 9		
1108-902-014-00	43 1	1359-716-100-10	39 2		35 10		
	43 6	1359-716-200-20	39 3	3555-601-008-00	31 9		
	43 12	1364-311-200-00	24 6	3560-302-002-00	2 7		
1108-902-015-10	43 5	1364-407-002-00	25 8		25 2		
	43 7		26 5		26 2		
	43 11	1365-241-002-00	17 5	3600-201-013-00	19 12		
	43 16		17 9		22 12		
1110-241-250-00	17 4	1373-941-004-00	43 4	3621-702-003-00	18 4		
1110-241-260-00	17 8		43 9		18 12		
1110-311-340-00	23 5		43 15	3670-423-001-00	5 3		
1110-401-014-00	25 1	1376-402-003-00	25 9	3737-234-005-00	9 8		
	26 1		26 10		10 8		
1110-402-001-00	27 1	1379-717-240-00	39 10		11 8		
1110-990-003-00	43 18		40 8	3737-313-005-00	8 2		
1302-225-003-00	16 8	1383-716-200-00	39 1	3759-164-005-00	30 7		
1305-241-001-00	17 3	1383-716-210-00	39 7		31 16		
	17 7	1390-931-200-00	5 7	8057-007-000-00	6 2		
	17 11		6 6	8592-016-250-00	41 3		
	25 4	1391-716-001-10	40 7				
	26 4	1391-716-210-10	40 3				
	39 6	1391-716-220-20	40 9				
	39 14	1391-716-230-10	40 6				
1305-701-006-00	40 5	1392-601-203-00	36 2				
	7 3	1396-121-001-00	3 9				
	7 8		3 14				
	7 13	1396-601-001-00	31 14				
1305-931-003-00	5 4	1396-606-002-00	31 6				
	5 8	1396-606-003-00	31 13				
	6 7	1396-606-210-10	31 10				
	41 6	1396-606-212-00	31 11				
1310-241-003-00	17 2	1396-606-213-00	31 12				
	39 4	1396-621-200-00	38 1				
1310-241-004-00	39 5	1409-117-006-00	27 2				
	39 13		27 7				
	40 4	1432-117-001-00	18 15				
1324-205-002-00	30 9		23 4				
1329-106-001-00	2 6		28 16				
1337-216-012-00	9 6	1480-504-002-00	28 14				

DESCRIPTION	REF . NO	DESCRIPTION	REF . NO	DESCRIPTION	REF . NO	DESCRIPTION	REF . NO
AIR FILTER ASSY	9 3	DECOMPRESSOR	3 7	NUT/M12	6 16	SLEEVE, GOVERNOR	7 10
ARM/GOVERNOR	7 12	ELBOW	9 10	NUT/M6	9 24	SPRING	7 4
ARM, PIVOT	7 9	ELEMENT/AIR FILTER	9 7	NUT, RING	10 6		7 5
ARM, SPLASH	2 11	FAN	9 8	O-RING	4 4		7 18
BAR	13 3	FILTER/FUEL	5 4		10 7		7 19
BEARING, PLAIN	1 6	FLOAT	10 3	PAWL	11 2		8 9
	1 9	FLOAT CHAMBER ASSY	8 12	PIN	3 8		8 24
BOLT	1 10	FLYWHEEL COMP	8 7	PIN, DOWEL	7 22		8 25
	1 13	GASKET	6 5	PIN, FLOAT	1 18	SPRING, RECOIL	11 11
	1 15		1 4	PIPE	8 21	SPRING, RETURN	11 12
	5 6		4 1	PIPE/INTAKE	2 2	SPRING, VALVE	11 10
	7 14		8 4	PISTON	9 13	STARTER/RECOIL	3 5
	8 17		8 5	PISTON 0.25	8 28	STUD	11 1
	9 17		9 1	PISTON 0.50	9 12		8 32
	9 21		9 2	PLATE	2 1		8 33
BOLT M6X8	11 8	GASKET/AIR FILTER	10 2		2 6	TAP ASSY	9 23
BOLT/M10X14	9 22	GASKET/HEAD	9 9		2 7	TAPPET	10 1
BOLT/M5X10	4 3	GASKET/INSULATOR	1 2	PLUG/SPARK	8 27	TOOL, WRENCH	3 4
BOLT/M5X12	6 13	GASKET/INTAKE PIPE	8 1	POT, FILTER	9 11	TUBE	13 2
BOLT/M5X20	1 14	GASKET/MUFFLER	8 2	PULLEY	6 10	TUBE 7X10X1000	6 9
BOLT/M6X10	6 14	GASKET, CHAMBER COVER	9 10	REEL	10 4	TUBE, BRAID/L=205	10 11
	5 7	GOVERNOR	1 3	RETAINER	11 13	VALVE	9 26
	7 21	GRIP	4 2	RING PISTON 0.25	11 6	VALVE THROTTLE	10 13
BOLT/M6X18	2 15	GRIP RECOIL STARTER	7 13	RING PISTON 0.50	11 3	VALVE, INLET	8 15
BOLT/M6X40	1 16	GROMMET	8 20	RING, SNAP	2 4	VALVE, NEEDLE	8 10
BOLT/6X8	11 14	HEAD, CYLINDER	11 5	ROD/GOVERNOR	2 5	WASHER	3 2
BOLT, CONN ROD	2 10	HOUSING/PISTON	6 11	ROD, CONN	2 3		3 1
BRACKET	6 1	IGNITER	6 12	SCREW	2 13		8 11
	7 1	INSULATOR	7 17	SCREW, M4X8	7 11		2 14
CAMSHAFT COMP	3 6	JET/MAIN	1 1	SCREW, PAN++	2 9		6 17
CAP	9 5	JET, PILOT	5 5	SCREW, DRAIN	11 7		7 16
CAP ASSY PLUG	6 3	KEY	6 2	SCREW, PILOT	5 8		7 20
CARBURETOR ASSY	8 3	LABEL	8 29	SEAL OIL	6 15	WASHER/M10	11 9
CASE/AIR FILTER	9 4	LABEL/MANUAL	8 30	SEAL, OIL	8 18	WASHER/M6	10 12
CASE, RECOIL STARTER	11 4	LEVER COMP	8 22	SEAT, SPRING	8 19		1 17
CLAMP	6 7	LINK/CHOKE	8 23	SHAFT/CARBURETOR	8 26		9 25
	10 10	MUFFLER COMP	2 16	SHAFT, CHOKE	9 18	WASHER, LOCK	2 12
CLIP	9 19	NOZZLE/MAIN	6 8	SHROUD/ENGINE	10 5	WIRE/LEAD	6 6
	10 9	NUT	9 6		7 6	WRENCH, SOCKET	13 1
COIL ASSY/IGNITION	6 4		12 1		7 7		
COLLAR/6.3X12X14	1 12		7 2		8 8		
COVER	5 1		7 8		8 6		
COVER/EXHAUST PIPE	9 15		9 14		9 20		
COVER/VALVE CHAMBER	1 7		8 10		1 11		
COVER, CRANKCASE	1 5		7 3		3 3		
COVER, CYL.	5 2		7 15		8 14		
CRANKCASE COMP	1 6		8 31		8 13		
CRANKSHAFT	2 8		10 8		5 3		

DESCRIPTION	REF . NO	DESCRIPTION	REF . NO	DESCRIPTION	REF . NO	DESCRIPTION	REF . NO
ARM/GOVERNOR	8 20	CAP, SPARK PLUG	7 3	GASKET, ROCKER CASE	1 5	PANEL/CONTROL ASSY	8 5
ARM/PIVOT	8 3	CARDUETOP ASSY	9 2	GAUGE, FUEL	13 16		8 31
ARM/ROCKER	3 4		9 22	GEAR/HELICAL	2 9	PAWL, RECOIL STARTER	14 4
ARRESTER SPARK	10 10	CASE/AIR FILTER	10 2	GOVERNOR-ASSY	8 21	PIN	1 10
ARRESTER/SPARK	11 11		11 2	GROMMET	7 16		3 11
BAR	16 2	CASE/ROCKER	1 3		8 26		3 12
BEARING, RB/6204	1 17	CASE, RECOIL STARTER	14 5	GUIDE	3 6		8 30
BOLT	1 9	CHAMBER FLOAT ASSY	9 5		14 3	PIN PISTON	2 3
	1 13	CLAMP	7 12	HANDLE	14 6	PIN, DOWEL	1 16
	1 14		7 17	HEAD/CYLINDER COMP	1 2	PIPE	10 11
	3 17		7 22	HOUSING/FAN	5 4		11 12
	5 5		9 18		6 4	PIPE/EXHAUST	10 9
	6 5		12 11	IGNITER	7 2		11 10
	7 18		13 21	IGNITION COIL ASSY	7 5	PIPE/INTAKE	9 15
	7 19	CLIP	12 10	INSULATOR	9 16	PIPE/TAIL	11 16
	8 16		13 19	JET/MAIN	9 12	PISTON	2 1
	8 22		13 20	JET/PILOT	9 13	PISTON L=0.5	2 2
	9 14	COVER/MUFFLER	11 14	KEY	2 10	PLATE	4 2
	10 15		11 15		3 19		8 7
	10 18	COVER, CRANKCASE	1 7		7 13		10 8
	11 21	CRANKCASE COMP	1 8	LABEL	15 2		11 9
	12 14	DECOMPRESSOR	3 10	LABEL/MANUAL	15 1	PLUG	4 6
	13 24	ELEMENT/AIR FILTER	10 4	LEVER	8 6		7 15
	13 25		10 5		8 32	POT, FILTER	12 5
	13 26		11 4	LINK/CHOKE	8 2		13 8
BOLT M6X8	10 17		11 5	MUFFLER COMP	10 12	PULLEY/STARTING	14 1
BOLT/M6X12	8 29	FAN	5 3		11 13	REEL, RECOIL STARTER	14 7
BOLT/M6X30	1 12		6 3	NOZZLE/MAIN	9 11	RETAINER-VALVESPRING	3 3
BOLT/M6X8	5 8	FILTER ASSY AIR	10 1	NUT	3 15	RING PISTON L=0.5	2 5
	6 6		11 1		5 6	RING SNAP	2 11
	14 13	FILTER/FUEL	12 4		7 20	RING/PISTON	2 4
BOLT/M8X16	5 9		13 7		8 9	RING/SNAP	14 10
	11 23	FILTER, FUEL	13 3		8 10	ROD ASSY CONNECTIONG	2 6
BOLT/M8X25	3 18	FLOAT ASSY	9 4		8 24	ROD/GOVERNOR	8 19
BOLT, CONNECTING ROD	2 7	FLYWHEEL COMP	7 6		9 17	ROD/PUSH	3 7
BRACKET	7 1	FUEL TANK COMP	13 4		10 14	ROPE 4X1500	14 8
	8 1	GASKET	1 4		11 19	SCREW	4 4
	12 1		4 1		12 9		7 9
	13 1		9 3		13 18		8 23
BRACKET/TANK	13 2		12 3	NUT/M6	10 20		8 32
BREATHER	1 6		13 6		11 25		10 13
CAMSHAFT ASSY	2 8		13 13	NUT, RING	12 7		11 17
CAMSHAFT COMP	3 9	GASKET/AIR FILTER	10 7		13 10		11 18
CAP	11 6		11 8	NUT, GMM	3 14		12 6
CAP TANK	13 12	GASKET/CARBURETOR	9 1	O-RING	4 5		13 9
CAP/OIL FILLER	4 3	GASKET/HEAD	1 1		12 8		13 14
CAP, AIR FILTER	10 3	GASKET/MUFFLER	10 6		13 11		13 17
	11 3		11 7	PANEL/CONTROL	8 8		14 9

DESCRIPTION	REF . NO	DESCRIPTION	REF . NO	DESCRIPTION	REF . NO	DESCRIPTION	REF . NO
SCREW ASSY	9 6	WASHER	5 7				
	9 9		7 10				
	9 10		7 11				
SCREW M4X6	8 17		8 11				
SEAL,OIL	1 11		8 25				
SHROUD/ENGINE	5 1		8 28				
	5 2		10 21				
	6 1		11 26				
SLEEVE,GOVERNOR	6 2	WASHER/NO	12 15				
SPACER	8 18		13 27				
SPRING	8 12	WASHER/NG	1 18				
	3 13		10 22				
	7 4		11 27				
	8 13	WIRE	7 7				
	8 14	WIRE/LEAD	7 8				
	8 15		7 21				
	11 20	WRENCH, SOCKET	16 5				
	13 15						
	14 12						
SPRING-ENGINE VALVE	3 8						
SPRING/GOVERNOR	8 4						
SPRING, LINK	8 27						
SPRING, RETURN	14 11						
STARTER RECOIL	14 2						
STUD	10 19						
	11 24						
STUD BOLT	9 21						
STUD M6X18	9 20						
TAP ASSY	12 2						
	13 5						
TAPPET	5 5						
TOOL DRIVER	16 4						
TOOL KIT	16 3						
TOOL, WRENCH	16 1						
TUBE	7 14						
	9 19						
	10 16						
	11 22						
TUBE 4X8X160	12 13						
	12 12						
	13 23						
TUBE/6X10X200	13 22						
VALVE/CHOKE ASSY	9 8						
	9 23						
VALVE/EXHAUST	3 2						
VALVE/INTAKE	3 1						
VALVE/THROTTLE ASSY	9 7						
WASHER	3 16						

DESCRIPTION	REF . NO	DESCRIPTION	REF . NO	DESCRIPTION	REF . NO	DESCRIPTION	REF . NO
ARM/SHIFT COMP	16 9	BOLT/M 8X120	21 4	BOLT,SEMS (SP)	33 4	COVER/CASE	11 3
ARM/SHIFT/A COMP	28 6		22 4		34 4	COVER/HANDLE	23 9
ARM/SHIFT/B COMP	28 10	BOLT/M 8X16	32 3		35 4	COVER/MUFFLER COMP	3 7
ARM/TENSION/A COMP	8 1	BOLT/M 8X30	9 10	BOLT,SEMS (S)	7 4	COVER/MUFFLER/3 COMP	3 12
ARM/TENSION/B COMP	8 8		10 10		7 9	DISK COMP	40 9
ARM/TENSION/C	8 15		11 10		7 14	DISK/SIDE SET	39 11
BALL,STEEL/5/16	16 7	BOLT/M 8X40	3 2	BOLT,SEMS (S) M8X16	30 10	DISK/SIDE COMP	39 12
BAND/ACCELERATOR	27 4		3 10	BOSS/FREE WHEEL/3P	17 8	FENDER/E COMP	36 8
	27 9		3 15	BOSS/FREE WHEEL/4P	17 4	FENDER/SUB/LH COMP	37 1
BAND,WIRE/140	25 9	BOLT/M 8X50	9 9	BRACKET/HANDLE/ COMP	21 1	FENDER/SUB/RH COMP	37 2
	26 10		10 9		22 1	FENDER/20 COMP	36 5
BAR/DEPTH/E	5 2		11 9	BRACKET/HANDLE/20	20 1	FENDER/30 COMP	36 1
BEARING,RB/6005	15 2	BOLT/M 8X55	1 3	BRACKET/HANDLE/30	19 1	FILTER	30 6
BEARING,RB/6202	12 3		1 8	BRACKET/TANK COMP	31 1	FRAME/FRONT/LH	1 1
	12 6		1 12	BREATHER/CAP TANK	31 12		1 6
	12 10		2 2	BREATHER/TANK CAP	30 5	FRAME/FRONT/RH	1 2
	12 13		9 11	BUMPER/FRONT SET	1 11		1 7
	13 2		10 11	CABLE/ACCEL/A	27 1	FRAME/HANDLE COMP	18 13
	13 4		11 11	CABLE/AXLE	27 6	FRAME/HANDLE/E COMP	18 8
	13 6	BOLT/M 8X60	4 2	CABLE/CLUTCH/E	25 5	FRAME/HANDLE/20 COMP	18 6
	13 8		4 6		26 6	FRAME/HANDLE/30 COMP	18 1
	16 2		36 3	CAP/G55	31 10	GASKET/CAP TANK	31 11
	16 4		36 6	CAP/TANK ASSY	30 2	GASKET/TANK CAP	30 3
BLADE	40 7	BOLT/M 8X65	36 9	CAP/32	9 8	GAUGE/FUEL ASSY	30 14
BLADE SET/16	39 7		37 4		10 8	GEAR/SPUR/13-20	12 9
BLADE/16 SET	40 6	BOLT/M 8X70	28 19		11 8	GEAR/SPUR/14-18	12 2
BLADE,LH/C118	39 8	BOLT/M08X110	8 4	CASE/TRANSMISSION/LH	9 1	GEAR/SPUR/54 ASSY	14 1
BLADE,RH/C118	39 9		8 11		10 1		14 6
BOLT	2 10		8 18		11 1	GRIP,BRAKE	19 12
	5 5	BOLT/M10X120	19 2	CASE/TRANSMISSION/RH	9 2		22 12
	9 4		20 2		10 2	GRIP,HANDLE	23 11
	10 4		33 5		11 2		24 10
BOLT(M8X25)SET	11 4	BOLT/M10X130	21 2	CHAIN/ROLLER/36	14 5	GUARD	9 15
	39 10		22 2		14 10		10 15
	40 8		32 7	CLIP,HOSE/D=11	30 7		11 15
BOLT(SP) M8X20	18 7		34 5		31 16	GUIDE/SHIFT	28 17
	23 13		35 5	CLIP,M TYPE	27 2	HANDLE/LH COMP	23 1
	23 15	BOLT/M10X140	24 3		27 7		24 1
	24 8	BOLT/M10X40	6 4	COVER/BELT/A	32 1	HANDLE/RH COMP	23 2
BOLT(SP)/M6X16	30 12	BOLT/M10X45	6 3		33 1		24 2
	32 11	BOLT/M10X70	23 6		34 1	HITCH/CALTI	6 2
	33 8	BOLT/M6X23	27 5		35 1	HITCH/CULTIVATION	6 1
	35 9		27 10	COVER/BELT/B/E COMP	34 3	HITCH/FRONTCOMP	2 1
BOLT/LOCK COMP	23 3	BOLT/SP	29 5	COVER/BELT/B/20 COMP	33 3	HITCH/REAR/E COMP	4 1
BOLT/M 8X110	19 13	BOLT,S/M6X25	31 8	COVER/BELT/B/30 COMP	32 5		4 5
	22 13	BOLT,SEMS (SP)	28 18		35 3	HOLDER/ENGINE COMP	3 6
BOLT/M 8X120	19 5		30 11	COVER/CASE	9 3	HOOD	29 3
	20 5		32 6		10 3	HOOD/REAR	29 1

DESCRIPTION	REF . NO	DESCRIPTION	REF . NO	DESCRIPTION	REF . NO	DESCRIPTION	REF . NO
HOSE/FUEL INSULATOR	31 15	NUT/M 6	29 7	O-RING/P18	10 7	PIN, HEADED B	39 5
KNIFE ROTOR ASSY	31 14		31 4		11 7		39 13
KNOB, LEVER	39 1	NUT/M 8	2 11	ORNAMENT/COVER	42 4		40 4
	18 15		9 12		42 9	PIN, NARROW STOPPER	2 7
	23 4		10 12		42 18		25 2
	28 16		11 12		42 23		26 2
KNOB, LEVER/24	28 2		28 5	ORNAMENT/ISEKI	42 3	PIN, SNAP/6	25 7
KNOB, SET	24 6		28 9		42 7		26 8
KNOB, SET/M6X15	29 2		28 21		42 12		28 15
	29 4	NUT/M10	6 5		42 16	PIN, SPLIT/2.5X15	2 8
	32 10		19 4		42 21	PIN, SPLIT/2.5X20	18 3
	33 7		20 4	ORNAMENT/OHV	42 8		18 11
	34 8		21 3		42 13		23 7
LABEL/CAUTION	35 8		22 3		42 17	PIN, WHEEL BOSS	17 5
	43 2	NUT/M12	41 4		42 22		17 9
	43 8	NUT, CASTLE/M12X1.25	18 2	ORNAMENT/SA340	42 14	PIPE, ROTARY A	39 2
	43 13		18 10	ORNAMENT/SA350	42 5	PIPE, ROTARY/B	39 3
LABEL/D/TANK	43 1	NUT, KNOB	32 12	ORNAMENT/SA530	42 1	PLATE	3 9
	43 6		33 9	ORNAMENT/SA540	42 19		3 14
LABEL/SHIFT	43 12		34 9	ORNAMENT/SA550	42 10		31 13
	43 10		35 10	PIN (5X26)	28 14	PLATE/I/16X32	3 1
LABEL/W/PULLEY/MUFFL	43 5	NUT, LOCK/M8	1 4	PIN ASSY	5 7	PLATE/LOCK COMP	23 5
	43 7		1 9		6 6	PLATE/SHIFT	28 1
	43 11		1 13	PIN/COTTER	26 9	PLATE/TANK CAP	30 4
LABEL/W/ROTER	43 16		2 4	PIN/GROOVE	19 11	PLUG, OIL	9 6
	43 3		3 3		22 11		10 6
LEVER/ACCEL/GE25ASSY	43 14		3 11	PIN/LOCK	19 8		11 6
	27 3		3 16		22 8	PULLEY/VB070 COMP	7 12
	27 8		4 3	PIN/SPRING	14 2	PULLEY/VB072	7 11
LEVER/CLUTCH	25 1		4 7		14 7	PULLEY/V2A050A068	7 1
	26 1		8 6	PIN/10X31	5 3	PULLEY/V2A125A110	7 2
LEVER/LOCK COMP	19 10		8 13	PIN/10X56	41 5	PULLEY/V2B062B078	7 6
	22 10		8 20	PIN/6X26	25 6	PULLEY/V2B117B105	7 7
LEVER/SHIFT/E COMP	28 13		19 7		26 7	PULLEY/43X44 ASSY	8 9
MANUAL/OPERATION	43 18		20 7	PIN, HAIR	5 4		8 16
	43 4		21 6		5 8	PULLEY, TENSION/45AS	8 2
MARK, SWITCH/EXPORT	43 9		22 6		6 7	RING, SNAP/15 C	8 3
	43 15		23 14		17 3		8 10
MOLDING	42 2		24 9		17 7		8 17
	42 6		36 4		17 11	RING, SNAP/20C	28 12
	42 11		36 7		25 4	ROTARY PIPE/B COMP	40 3
	42 15		36 10		26 4	RUBBER, CUSHION	36 2
NUT	42 20	O-RING/P 8	37 6		39 6	SCREW	23 10
	5 6		9 5		39 14	SCREW/M5X25	10 17
	23 8		10 5		40 5	SCREW, LOCK, COMP.	18 14
NUT/M 5	37 3	O-RING/P 9	11 5		41 6	SEAL, OIL/SC15327	12 4
	10 18	O-RING/P18	16 10	PIN, HEADED A	17 2		12 7
			9 7		39 4		12 11

DESCRIPTION	REF . NO	DESCRIPTION	REF . NO	DESCRIPTION	REF . NO	DESCRIPTION	REF . NO
SEAL,OIL/SC15327	12 14	VBELT/VB027	7 15	WASHER,PL/M 8	28 20		
SEAL,OIL/TC25407	15 3	VBELT/VB030	7 10		30 13		
SEAL,OIL/VC25405	15 4	WASHER	31 2		32 4		
SHAFT/BACK	16 1		31 7		36 11		
SHAFT/BACK/33J	16 3	WASHER / M6	3 8		37 5		
SHAFT/COUNTER/3 COMP	13 1		3 13	WASHER,PL/M14	18 16		
SHAFT/COUNTER/33J	13 5		25 10	WASHER,PULLEY	18 4		
SHAFT/COUNTER20 COMP	13 3		29 6		18 12		
	13 7	WASHER/M10	19 3	WASHER,SP/M 6	31 3		
SHAFT/MAIN/A	12 1		20 3	WASHER,SP/M 8	3 5		
SHAFT/MAIN/B	12 5		21 7		9 14		
SHAFT/MAIN/C	12 8		22 7		10 14		
SHAFT/MAIN/D COMP	12 12		24 5		11 14		
SHAFT/REDUCTION	14 3		32 9		19 15		
	14 8		34 7		22 15		
SHAFT/WHEEL/E COMP	15 1		35 7		28 4		
SHAFTCAP/42X50	10 16	WASHER/M20	28 11		28 8		
SHIFTER	16 6	WASHER/11X24X3	17 6	WASHER,SP/M10	24 4		
SPACER	31 6		17 10		32 8		
SPRING/HT017	19 9	WASHER/15X26X01	14 4		33 6		
	22 9		14 9		34 6		
SPRING/HT024	8 7	WASHER/16X62X02	18 5		35 6		
	8 14		18 9	WASHER,SP/M14	18 17		
	8 21	WASHER,FOLLOWER	30 9	WASHER,SPROKET	7 3		
SPRING,BRAKE	25 8	WASHER,PL/M 8	1 5		7 8		
	26 5		1 10		7 13		
SPRING,SHIFTER	16 8		1 14	WHEEL COMP	41 3		
SPRING,STAND	2 6		2 3	WHEEL/FRONT SET	41 1		
STANDCOMP	2 5		2 9				
STAY/SHIFTER	16 5		3 4				
STOPPER/BELT/20	33 2		4 4				
STOPPER/BELT/30	32 2		4 8				
STOPPER/BELT/33J	34 2		8 5				
	35 2		8 12				
STRAINER	31 9		8 19				
SUPPORT/BAR/DEPTH	5 1		9 13				
SUPPORT/TANK/30 COMP	30 8		10 13				
SUPPORT/WHEEL COMP	41 2		11 13				
SWITCH/STOP ASSY	38 2		19 6				
SWITCH,STOP A	38 1		19 14				
TANK/FUEL/20	31 5		20 6				
TANK/FUEL/30 COMP	30 1		21 5				
TUBE	23 12		22 5				
	24 7		22 14				
TUBE/ROTARY SET	40 1		25 3				
TUBE/ROTARY/A COMP	40 2		26 3				
TUBE/040	17 1		28 3				
VBELT/VA029	7 5		28 7				