



Parts Manual

Mfg. No: 38715B
Lawn Tractor (2000)

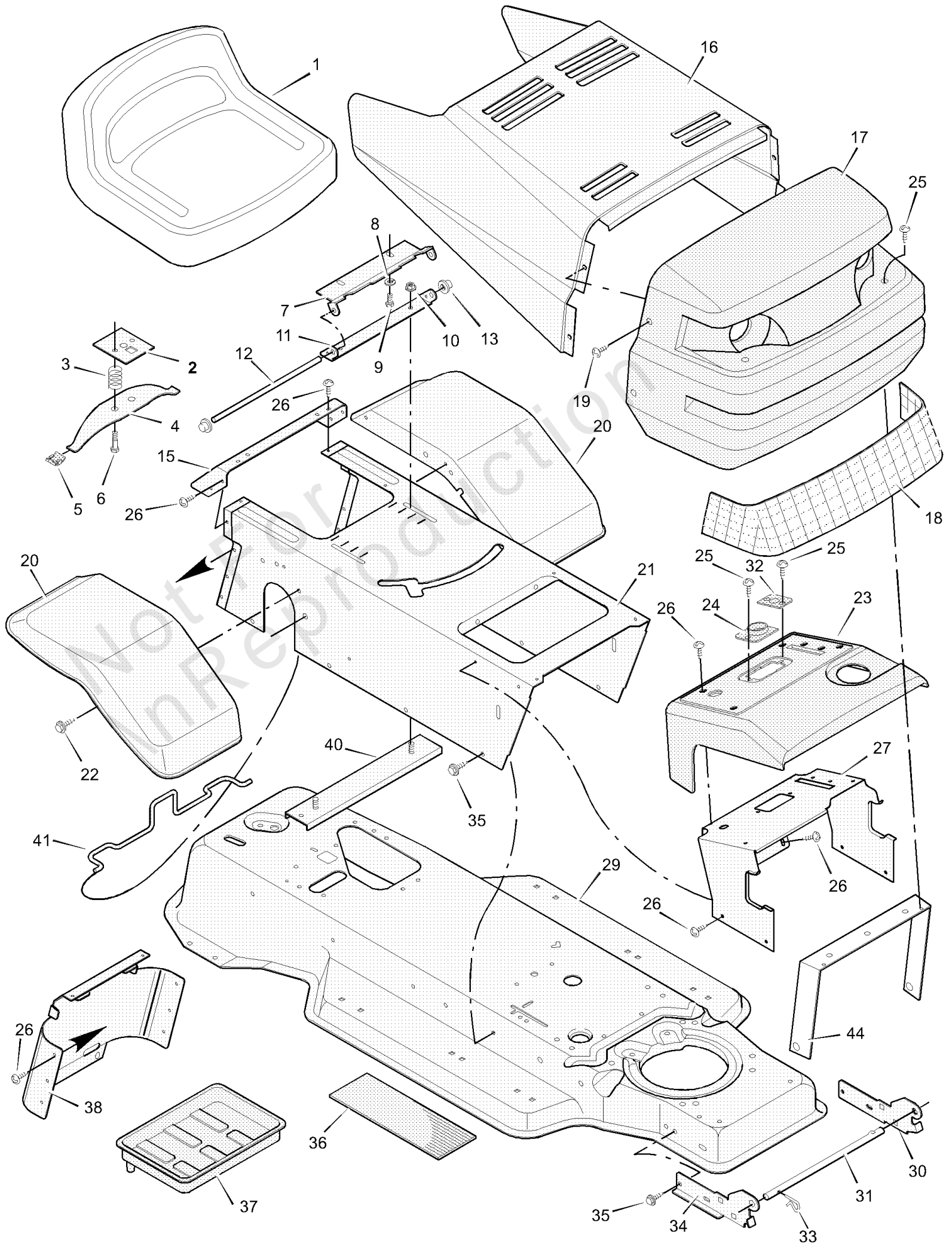
| Model Components | Page |
|---------------------------------|-------------|
| Chassis & Hood..... | 4 |
| Electrical System..... | 6 |
| Engine Mount..... | 8 |
| Motion Drive..... | 10 |
| Mower Housing..... | 14 |
| Mower Housing Suspension..... | 18 |
| Steering..... | 20 |
| Torque Specification Chart..... | 22 |

Not For
In Reproduction

Chassis & Hood

Note: Unless noted otherwise, use the standard torque specifications

Mfg. No: 38715B



Chassis & Hood

| REF NO | PART NO | QTY | DESCRIPTION |
|--------|--------------|-----|-------------------------------------|
| 1 | 092387MA | | Seat |
| 2 | 091963 Z | | Plate Assembly, Switch |
| 3 | 164X26MA | | Spring, Compression |
| 4 | 091964MA | | Spring, Seat |
| 5 | 091822MA | | Glide, Spring |
| 6 | 009X38MA | | Bolt, Shoulder |
| 7 | 092334E700 | | Support, Seat |
| 8 | 018X16MA | | Lockwasher |
| 9 | 001X45MA | | Bolt, Hex |
| 10 | 015X88MA | | Locknut, Flange |
| 11 | 091729E701 | | Bracket, Pivot |
| 12 | 091730 Z | | Rod, Pivot |
| 13 | 028X23MA | | Cap, Push On |
| 15 | 091724E700 | | Fender, Apron |
| 16 | 092333E276 | | Hood |
| 17 | 092350MA | | Grille Assembly -(Includes Lens) |
| 18 | 092344MA | | Lens |
| 19 | 009X47MA | | Screw |
| 20 | 92328E276 | | Fender |
| 21 | 092727E700 | | Console Assembly |
| 22 | 26X263MA | | Screw |
| 23 | 92605E700 | | Dash Panel |
| 24 | 092399 | | Bearing, Steering |
| 25 | 26X239MA | | Screw |
| 26 | 26X270 | | Screw |
| 27 | 92331E700 | | Support, Dash |
| 29 | 092815E700 | | Frame Assembly |
| 30 | 092347E701MA | | Bracket, Left Grille |
| 31 | 092332 Z | | Rod, Pivot |
| 32 | 092398 | | Bearing |
| 33 | 0031X4MA | | Pin, Hair |
| 34 | 092346E700 | | Bracket, Right Grille |
| 35 | 26X249MA | | Screw |
| 36 | 094107 | | Mat |
| 37 | 091895MA | | Tray, Battery |
| 38 | 092443E700 | | Cap, Console |
| 39 | 002X64MA | | Bolt |
| 40 | 091857E701 | | Channel Assembly |
| 41 | 092725 Z | | Clamp, Battery |
| 44 | 92448 Z | | Brace, Grille |
| -- | F-000774L | | Instruction Book & Parts List |

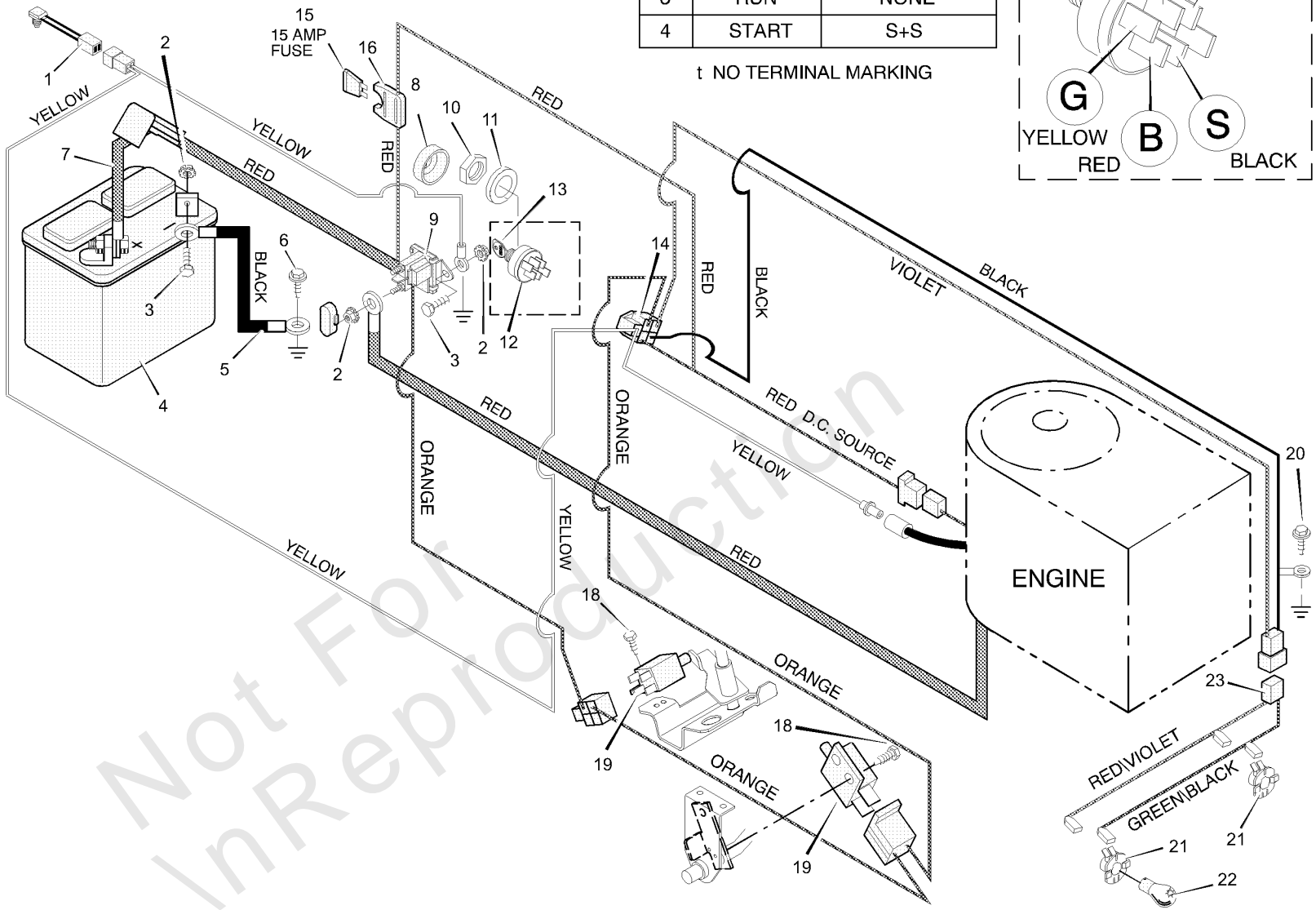
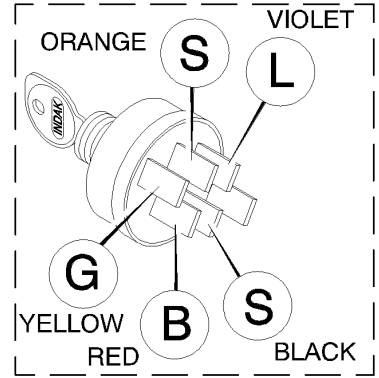
Electrical System

Note: Unless noted otherwise, use the standard torque specifications

Mfg. No: 38715B

| POS. | FUNCTION | CIRCUIT (MAKE) |
|------|------------|----------------|
| 1 | OFF | G |
| 2 | RUN LIGHTS | B+L |
| 3 | RUN | NONE |
| 4 | START | S+S |

† NO TERMINAL MARKING



Not For In Reproduction

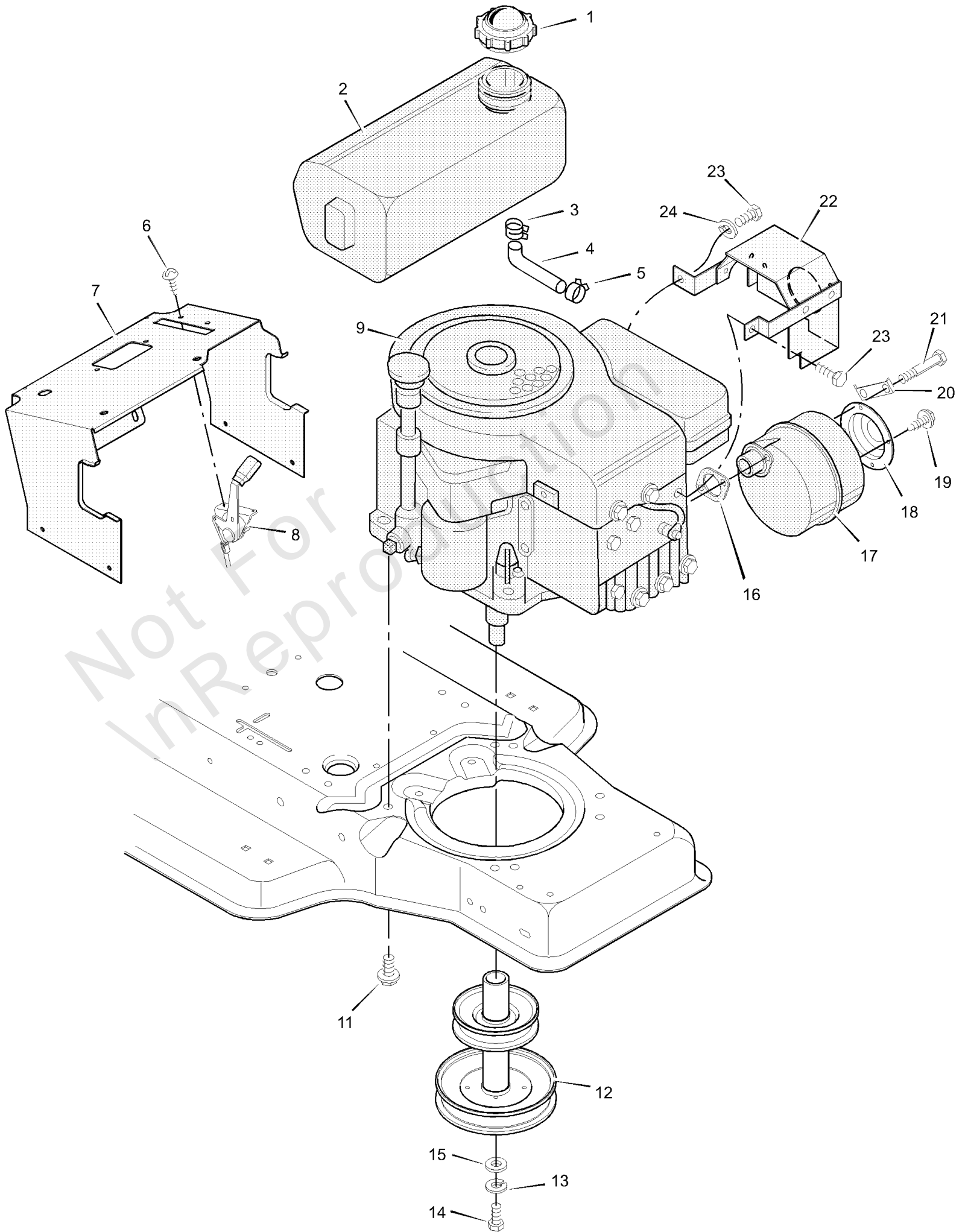
Electrical System

| REF NO | PART NO | QTY | DESCRIPTION |
|--------|----------|-----|--------------------------------|
| 1 | 091031 | | Switch, Seat Sensor |
| 2 | 15X116MA | | Locknut |
| 3 | 001X38MA | | Bolt, Hex |
| 4 | 091414 | | Battery |
| 5 | 024X30 | | Cable, Battery Ground |
| 6 | 26X249MA | | Screw |
| 7 | 024X29MA | | Cable, Red Battery |
| 8 | 091488 | | Cap, Ignition |
| 9 | 094613 | | Solenoid |
| 10 | 091489MA | | Nut |
| 11 | 26X214MA | | Screw |
| 12 | 092377MA | | Switch, Ignition |
| 13 | 020729 | | Key, Ignition |
| 14 | 250X50MA | | Harness, Chassis Wire |
| 15 | 054212 | | Fuse |
| 16 | 407078MA | | Holder, Fuse |
| 18 | 26X233MA | | Screw |
| 19 | 024273MA | | Switch, Clutch |
| 20 | 0025X2MA | | Screw |
| 21 | 092372 | | Socket, Light |
| 22 | 090084MA | | Bulb, Light |
| 23 | 250X40MA | | Harness, Light Wire |
| 24 | 054148MA | | Cover, Terminal -(Optional) |

Engine Mount

Note: Unless noted otherwise, use the standard torque specifications

Mfg. No: 38715B



Engine Mount

| REF NO | PART NO | QTY | DESCRIPTION |
|--------|-----------|-----|-----------------------|
| 1 | 092317MA | | Fuel Cap |
| 2 | 092342 | | Fuel Tank |
| 3 | 095197MA | | Hose Clamp |
| 4 | 023717 | | Fuel Line |
| 5 | 095197MA | | Hose Clamp |
| 6 | 26X201MA | | Screw |
| 7 | 92331E700 | | Support, Dash |
| 8 | 092371MA | | Throttle Control |
| 9 | ----- | | Engine * |
| 11 | 0025X7MA | | Bolt, Engine Mount |
| 12 | 690442 Z | | Stack Pulley Assembly |
| 13 | 019X35MA | | Lockwasher |
| 14 | 01X140MA | | Bolt, Hex |
| 15 | 17X170MA | | Washer |
| 16 | 692236 | | GASKET, Exhaust |
| 17 | 091271 | | Muffler |
| 18 | 094099 Z | | Deflector, Muffler |
| 19 | 26X208MA | | Screw |
| 20 | 092378MA | | Lock, Screw |
| 21 | 01X134MA | | Bolt |
| 22 | 092381SE | | Shield, Heat |
| 23 | 0025X2MA | | Bolt |
| 24 | 018X32MA | | Washer |

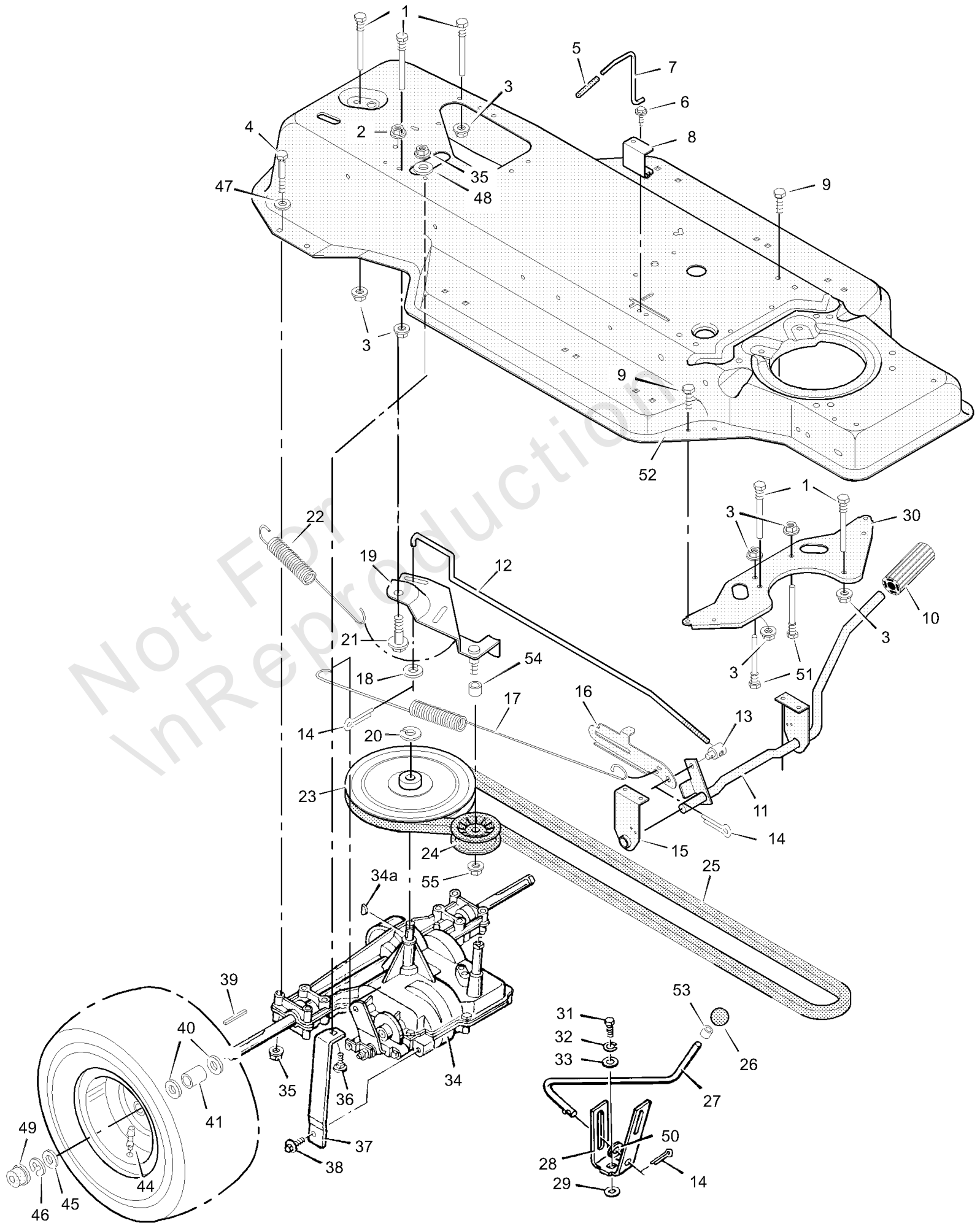
Footnotes:

Note* Parts are available from an Authorized Engine Service Center. See "Engines, Gasoline" or "Gasoline Engines" in the yellow pages of the telephone directory.

Motion Drive

Note: Unless noted otherwise, use the standard torque specifications

Mfg. No: 38715B



Motion Drive

| REF NO | PART NO | QTY | DESCRIPTION |
|--------|------------|-----|-------------------------|
| 1 | 091754MA | | Guide, Belt |
| 2 | 015X84MA | | Locknut, Flange |
| 3 | 015X79MA | | Nut, Flange |
| 4 | 01X124 | | Bolt, Hex |
| 5 | 091079MA | | Grip |
| 6 | 26X214MA | | Screw |
| 7 | 91727E700 | | Rod, Control |
| 8 | 91825E700 | | Guide, Bracket |
| 9 | 26X249MA | | Screw |
| 10 | 021544MA | | Clutch and Brake Pedal |
| 11 | 091862E700 | | Lever Assembly |
| 12 | 091808 Z | | Rod, Clutch |
| 13 | 021920ZMA | | Nut, Adjustable |
| 14 | 030X20MA | | Pin, Cotter |
| 15 | 091713E701 | | Bracket, Support |
| 16 | 091712 Z | | Latch, Park Brake |
| 17 | 165X82MA | | Spring, Brake Extension |
| 18 | 017X47MA | | Washer |
| 19 | 092737 Z | | Bracket Assembly, Idler |
| 20 | 0011X7MA | | Ring, Retainer |
| 21 | 009X39MA | | Bolt, Shoulder |
| 22 | 165X76 | | Spring, Drive Extension |
| 23 | 095094MA | | Pulley, Motion Drive |
| 24 | 690409MA | | Pulley, Backside Idler |
| 25 | 037X61MA | | Belt, Motion Drive |
| 26 | 091995 | | Knob, Shift Lever |
| 27 | 091805 Z | | Lever, Shift |
| 28 | 091806 Z | | Yoke, Shift |
| 29 | 17X148MA | | Washer |
| 30 | 92694E700 | | Plate, Belt Guide |
| 31 | 01X145MA | | Bolt, Hex |
| 32 | 018X32MA | | Lockwasher |
| 33 | 17X180MA | | Washer |
| 34 | ----- | | Transaxle, Peerless ** |
| 34A | 020697MA | | Woodruff Key No. 9 |
| 35 | 015X88MA | | Nut, Flange |
| 36 | 002X64MA | | Bolt, Carriage |
| 37 | 091804E700 | | Support, Transaxle |
| 38 | 26X216MA | | Screw |
| 39 | 021553MA | | Key, Square |
| 40 | 17X160MA | | Washer |
| 41 | 690553 Z | | Spacer, Transaxle |
| 42 | 091923MA | | Tire * |
| -- | 407049MA | | Tube |
| 43 | 0 92288601 | | Wheel & Tire Assembly |
| 44 | 024373MA | | Stem, Valve |
| 45 | 17X195MA | | Washer |
| 46 | 0011X3MA | | E-Ring |

Footnotes:

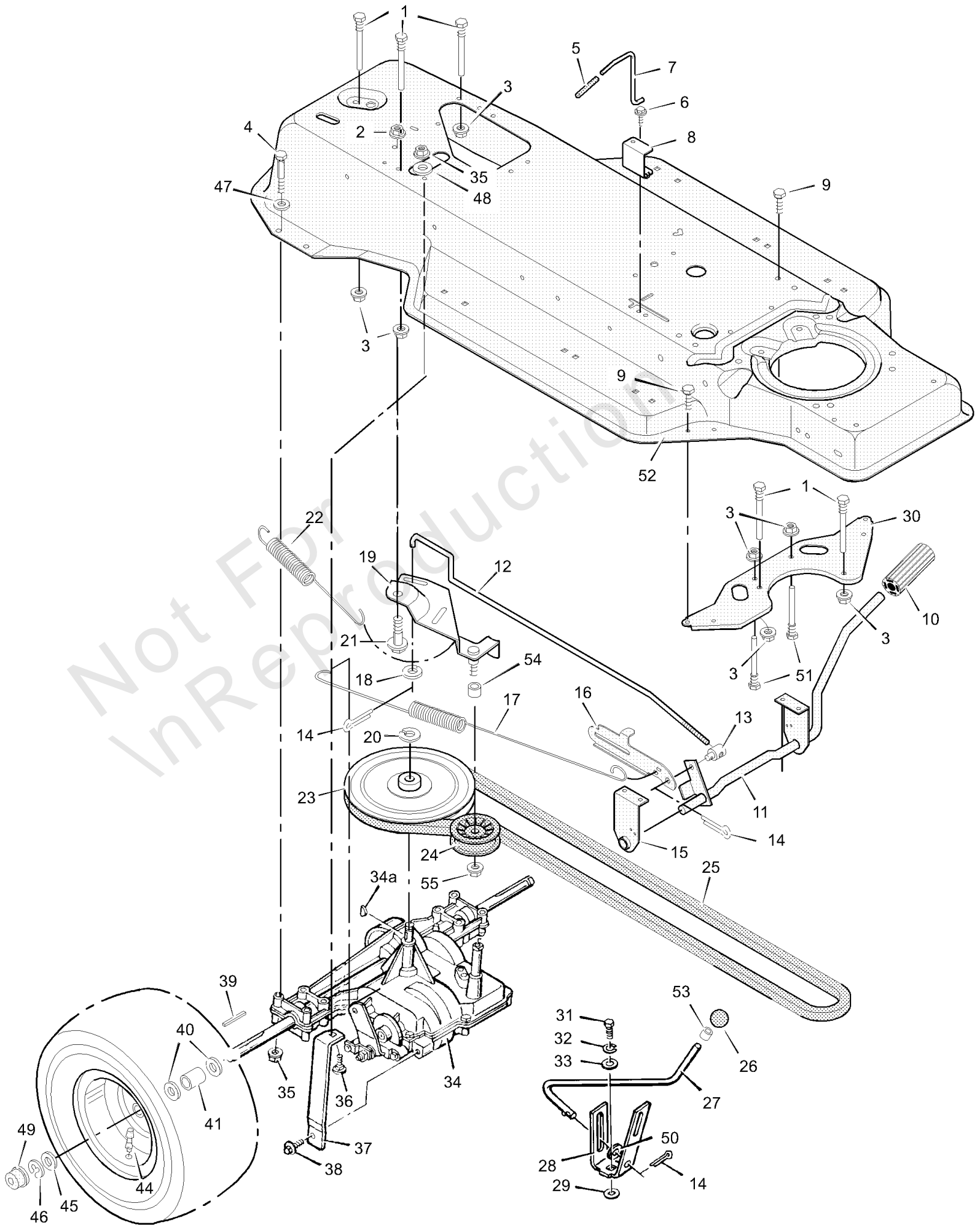
Note* When you order a tire, make sure to give the brand name of the tire so that the tread pattern on the tire will match.

Note** Contact your nearest Peerless transaxle dealer for parts and service.

Motion Drive

Note: Unless noted otherwise, use the standard torque specifications

Mfg. No: 38715B



Motion Drive

| REF NO | PART NO | QTY | DESCRIPTION |
|--------|-----------|-----|------------------------|
| 47 | 017X37MA | | Washer |
| 48 | 017X45MA | | Washer |
| 49 | 094618MA | | Hub Cap -(Optional) |
| 50 | 17X102MA | | Washer |
| 51 | 020619MA | | Guide, Belt |
| 52 | 92815E276 | | Frame Assembly |
| 53 | 092008 | | Ring, Tolerance |
| 54 | 690369MA | | Spacer |
| 55 | 015X98MA | | Nut |

Not For
In Reproduction

Footnotes:

Note* When you order a tire, make sure to give the brand name of the tire so that the tread pattern on the tire will match.

Note** Contact your nearest Peerless transaxle dealer for parts and service.

Mower Housing

| REF NO | PART NO | QTY | DESCRIPTION |
|--------|--------------|-----|---------------------------------|
| 1 | 15X121 | | Nut, Hex |
| 3 | 092852MA | | Pulley, Jackshaft |
| 4 | 015X84MA | | Locknut, Flange |
| 5 | 092850 | | Spacer |
| 6 | 037X63MA | | Belt, Blade Drive |
| 7 | 690387MA | | Pulley, Idler |
| 8 | 030X20MA | | Pin, Cotter |
| 9 | 015X88MA | | Locknut, Flange |
| 10 | 017X46 Z | | Washer |
| 11 | 092183SEMA | | Brake Assembly, Right |
| 12 | 092183SEMA | | Brake Assembly, Left |
| 13 | 166X27MA | | Spring, Torsion |
| 14 | 0025X7MA | | Bolt, Hex |
| 15 | 092072SEMA | | Bracket Assembly, Brake |
| 16 | 091745 Z | | Rod, Brake |
| 17 | 092183SEMA | | Rod, Cross Link |
| 18 | 0031X4MA | | Pin, Hair |
| 19 | 092131 | | Nut, Adjustable |
| 20 | 091748 Z | | Rod, Adjuster |
| 21 | 021920ZMA | | Nut, Adjustable |
| 22 | 092064E701MA | | Link, Suspension |
| 23 | 17X103MA | | Washer |
| 24 | 092194E701MA | | Bracket Assembly, Right Lifter |
| 25 | 015X79MA | | Nut, Flange |
| 26 | 092033SEMA | | Crank, Bell |
| 27 | 009X39MA | | Bolt, Shoulder |
| 28 | 092032SEMA | | Arm Assembly, Idler |
| 29 | 91741E700 | | Plate, Adjuster |
| 30 | 091792E700 | | Cover, Pulley |
| 31 | 91797E700 | | Guide, Belt |
| 32 | 91813E700 | | Bracket Assembly, Left Lifter |
| 33 | 165X72MA | | Spring, Extension |
| 34 | 91743E700 | | Bracket, Pivot |
| 35 | 091770E700MA | | Plate |
| 36 | 017X57MA | | Washer |
| 37 | 002X53MA | | Bolt, Carriage |
| 38 | 094707MA | | Deflector Assembly, Chute |
| 39 | 0166X4MA | | Spring, Torsion |
| 40 | 094956E701MA | | Bracket, Hinge |
| 41 | 91793E700 | | Bracket, Front Hanger |
| 42 | 094957ZMA | | ROD, Deflector |
| 43 | 028X23MA | | Cap, Push On |
| 44 | 091739 Z | | Rod, Hanger |
| 45 | 17X124MA | | Washer |
| 46 | 092119SEMA | | Hanger, Front |
| 47 | 690369MA | | Spacer |
| 48 | 015X98MA | | Nut |
| 49 | 001X84MA | | CAPSCREW, Hex Head, 5/16-18 x 1 |
| 50 | 690222 | | Housing, Jackshaft |
| 51 | 092849MA | | Jackshaft |
| 52 | 092466MA | | Adapter, Blade |

Mower Housing

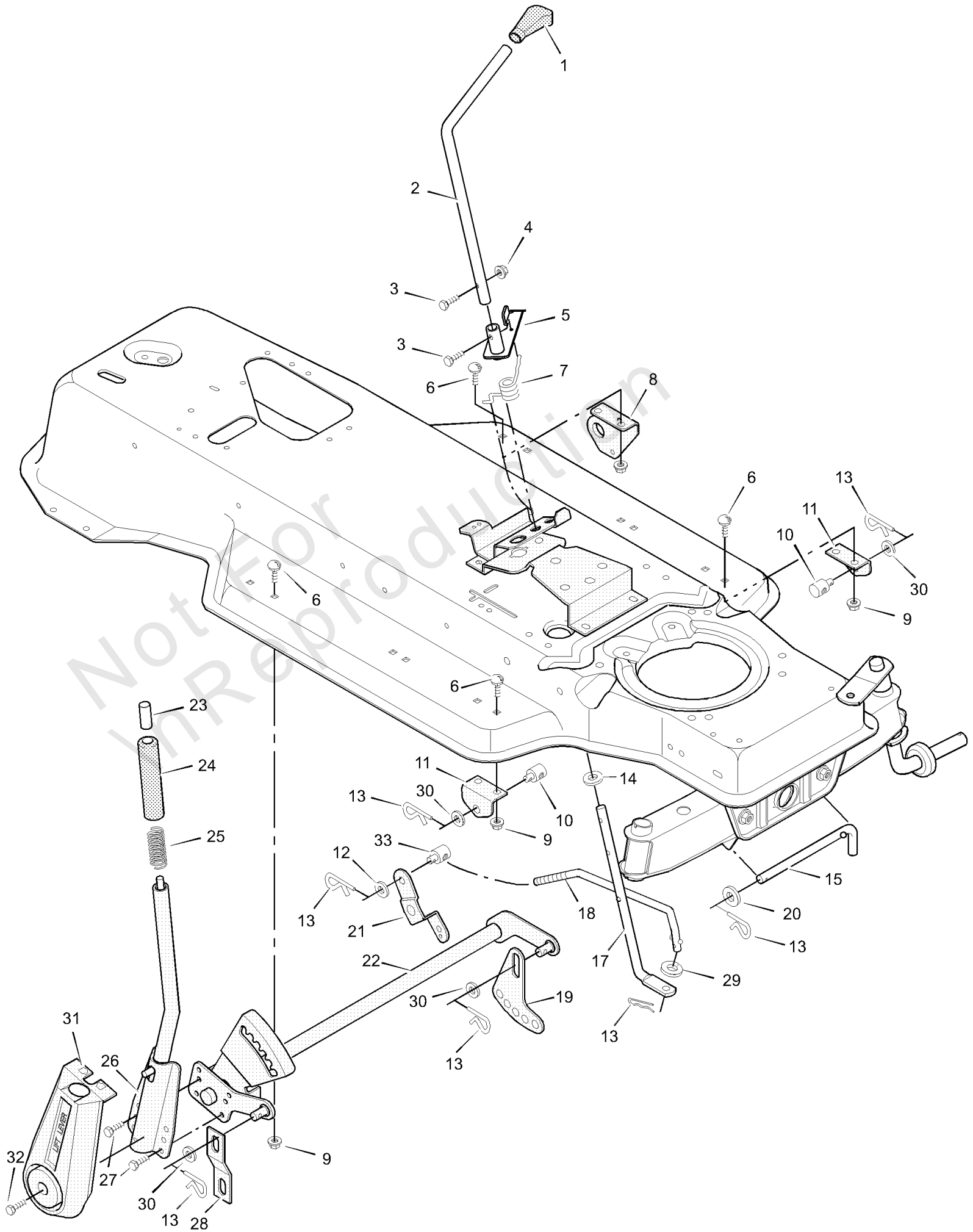
| REF NO | PART NO | QTY | DESCRIPTION |
|--------|--------------|-----|-----------------------------|
| 53 | 095104E701MA | | Blade, 38" -(2 required) |
| 54 | 17X166MA | | Washer, Belleville |
| 55 | 17X165MA | | Washer |
| 56 | 15X100MA | | Nut, Hex |
| 58 | 092163MA | | Indicator, Plastic |
| 59 | 017X48MA | | Washer |
| 60 | 091906E701MA | | Housing, Blade (38") |
| 61 | 009X42MA | | Bolt, Shoulder |

Not For In Reproduction

Mower Housing Suspension

Note: Unless noted otherwise, use the standard torque specifications

Mfg. No: 38715B



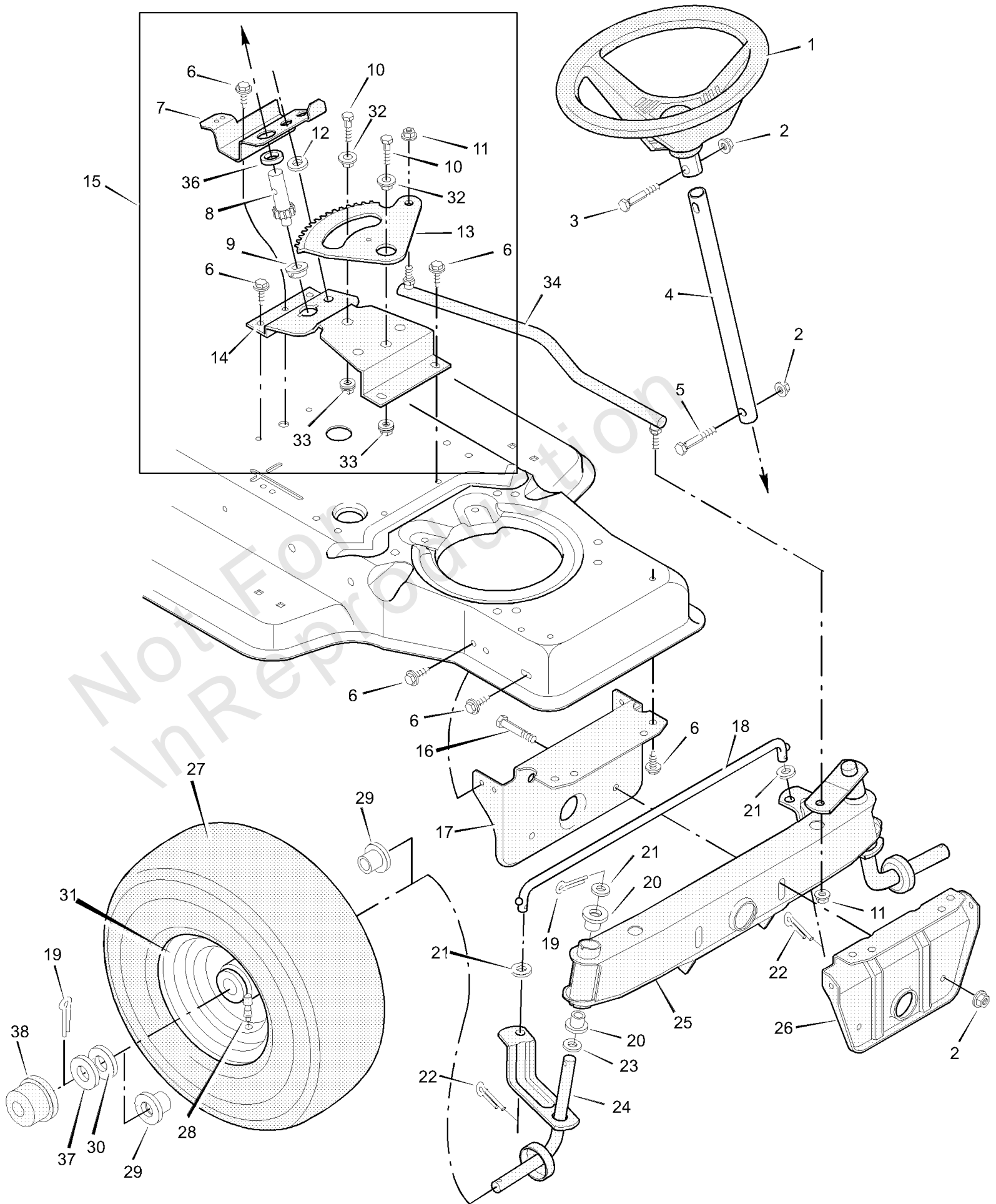
Mower Housing Suspension

| REF NO | PART NO | QTY | DESCRIPTION |
|--------|--------------|-----|----------------------------------|
| 1 | 092698MA | | Grip |
| 2 | 091781 Z | | Control, Blade Rotation |
| 3 | 0025X3MA | | Screw, Hex |
| 4 | 015X67MA | | Locknut, Hex |
| 5 | 091917E701MA | | Lever Assembly, Switch |
| 6 | 002X53MA | | Bolt, Carriage |
| 7 | 166X32MA | | Spring, Torsion |
| 8 | 092066E701MA | | Bracket, Rear Hanger |
| 9 | 015X79MA | | Nut, Flange |
| 10 | 092131 | | Nut, Adjusting |
| 11 | 092133SEMA | | Bracket, Adjuster Rod |
| 12 | 17X124MA | | Washer |
| 13 | 0031X4MA | | Pin, Hair |
| 14 | 17X122 | | Washer |
| 15 | 090827 Z | | Pin, Pull |
| 17 | 091787E701MA | | Lever, Lower Blade Control |
| 18 | 091795 Z | | Rod, Blade Control |
| 19 | 91741E700 | | Plate, Adjuster |
| 20 | 17X103MA | | Washer |
| 21 | 092033SEMA | | Bracket, Pivot |
| 22 | 092065E701MA | | Lifter Assembly |
| 23 | 092572MA | | Button, Push |
| 24 | 092783MA | | Grip |
| 25 | 164X21MA | | Spring, Compression |
| 26 | 091823SEMA | | Handle Assembly |
| 27 | 026X49MA | | Screw |
| 28 | 092064E701MA | | Link, Suspension |
| 29 | 017X47MA | | Washer |
| 30 | 017X91MA | | Washer |
| 31 | 092157MA | | Cover, Lift Lever -(Optional) |
| 32 | 26X263MA | | Screw |
| 33 | 021920ZMA | | Nut, Adjusting |

Steering

Note: Unless noted otherwise, use the standard torque specifications

Mfg. No: 38715B



Steering

| REF NO | PART NO | QTY | DESCRIPTION |
|--------|--------------|-----|---------------------------------|
| 1 | 92076 | | Wheel, Steering |
| 2 | 15X118MA | | Nut, Hex |
| 3 | 001X66MA | | Bolt, Hex |
| 4 | 091860 Z | | Post, Steering |
| 5 | 001X74MA | | Bolt, Hex |
| 6 | 26X249MA | | Screw |
| 7 | 091716E700 | | Bracket, Sector |
| 8 | 092715MA | | Gear, Pinion |
| 9 | 092716MA | | Bearing |
| 10 | 001X84MA | | CAPSCREW, Hex Head, 5/16-18 x 1 |
| 11 | 015X87 | | Locknut, Flange |
| 12 | 092564MA | | Spacer |
| 13 | 092316 | | Gear, Sector |
| 14 | 091708E700 | | Bracket, Sector |
| 15 | 402075MA | | Kit, Steering Gear |
| 16 | 01X146MA | | Bolt, Hex |
| 17 | 92529E700 | | Support, Rear Axle |
| 18 | 090038 Z | | Rod, Tie |
| 19 | 030X49MA | | Pin, Cotter |
| 20 | 092527MA | | Bearing |
| 21 | 017X57MA | | Washer |
| 22 | 030X20MA | | Pin, Cotter |
| 23 | 17X113MA | | Washer |
| 24 | 091828E701MA | | Spindle Assembly, Right |
| 25 | 92518E700 | | Spindle Assembly, Axle & Left |
| 26 | 92528E700 | | Support, Front Axle |
| 27 | 091912MA | | Tire * |
| -- | 407047MA | | Tube |
| 28 | 024373MA | | Stem, Valve |
| 29 | 091334 | | Bearing, Wheel |
| 30 | 17X195MA | | Washer |
| 31 | 094578601 | | Wheel & Tire Assembly |
| 32 | 092097MA | | Bearing |
| 33 | 15X113MA | | Locknut, Flange |
| 34 | 091749E701MA | | Link, Drag |
| 36 | 092280MA | | Spacer, Pinion Gear |
| 37 | 17X192MA | | Washer |
| 38 | 094618MA | | Hub Cap -(Optional) |

Footnotes:

Note* When you order a tire, make sure to give the brand name of the tire so that the tread pattern on the tire will match.

Hardware Identification & Torque Specifications

| Torque Specification Chart | | | | | | | | |
|--|-----------|------|-----------|------|------------|------|------------|------|
| FOR STANDARD METRIC MACHINE HARDWARE (Tolerance ± 20%) | | | | | | | | |
| Property Class | 5.6 | | 8.8 | | 10.9 | | 12.9 | |
| | Class 5.6 | | Class 8.8 | | Class 10.9 | | Class 12.9 | |
| Size Of Hardware | in/lbs | Nm. | in/lbs | Nm. | in/lbs | Nm. | in/lbs | Nm. |
| | ft/lbs | | ft/lbs | | ft/lbs | | ft/lbs | |
| M3 | 5.88 | .56 | 13.44 | 1.28 | 19.2 | 1.80 | 22.92 | 2.15 |
| M4 | 13.44 | 1.28 | 30.72 | 2.90 | 43.44 | 4.10 | 52.56 | 4.95 |
| M5 | 26.4 | 2.50 | 60.96 | 5.75 | 5.97 | 8.10 | 7.15 | 9.7 |
| M6 | 44.64 | 4.3 | 7.3 | 9.9 | 10.3 | 14 | 12.1 | 16.5 |
| M7 | 5.2 | 7.1 | 12.1 | 16.5 | 16.9 | 23 | 19.9 | 27 |
| M8 | 7.7 | 10.5 | 17.7 | 24 | 25 | 34 | 29 | 40 |
| M10 | 15 | 21 | 35 | 48 | 50 | 67 | 59 | 81 |
| M12 | 26 | 36 | 61 | 83 | 86.2 | 117 | 103 | 140 |
| M14 | 42 | 58 | 101 | 132 | 136 | 185 | 162 | 220 |
| M16 | 64 | 88 | 147 | 200 | 210 | 285 | 250 | 340 |
| M18 | 89 | 121 | 202 | 275 | 287 | 390 | 346 | 470 |
| M20 | 126 | 171 | 290 | 390 | 405 | 550 | 486 | 660 |
| M22 | 169 | 230 | 390 | 530 | 559 | 745 | 656 | 890 |
| M24 | 217 | 295 | 497 | 375 | 708 | 960 | 840 | 1140 |
| M27 | 320 | 435 | 733 | 995 | 1032 | 1400 | 1239 | 1680 |
| M30 | 435 | 590 | 995 | 1350 | 1401 | 1900 | 1681 | 2280 |
| M33 | 590 | 800 | 1349 | 1830 | 1902 | 2580 | 2278 | 3090 |
| M36 | 759 | 1030 | 1740 | 2360 | 2441 | 3310 | 2935 | 3980 |
| M39 | 988 | 1340 | 2249 | 3050 | 3163 | 4290 | 3798 | 5150 |

| Torque Specification Chart | | | | | | |
|---|-------------|-------|-------------|-------|-------------|---------|
| FOR STANDARD MACHINE HARDWARE (Tolerance ± 20%) | | | | | | |
| Hardware Grade | No Marks | | SAE Grade 5 | | SAE Grade 8 | |
| | SAE Grade 2 | | SAE Grade 5 | | SAE Grade 8 | |
| Size Of Hardware | in/lbs | Nm. | in/lbs | Nm. | in/lbs | Nm. |
| | ft/lbs | | ft/lbs | | ft/lbs | |
| 8-32 | 19 | 2.1 | 30 | 3.4 | 41 | 4.6 |
| 8-36 | 20 | 2.3 | 31 | 3.5 | 43 | 4.9 |
| 10-24 | 27 | 3.1 | 43 | 4.9 | 60 | 6.8 |
| 10-32 | 31 | 3.5 | 49 | 5.5 | 68 | 7.7 |
| 1/4-20 | 66 | 7.6 | 8 | 10.9 | 12 | 16.3 |
| 1/4-28 | 76 | 8.6 | 10 | 13.6 | 14 | 19.0 |
| 5/16-18 | 11 | 15.0 | 17 | 23.1 | 25 | 34.0 |
| 5/16-24 | 12 | 16.3 | 19 | 25.8 | 29 | 34.0 |
| 3/8-16 | 20 | 27.2 | 30 | 40.8 | 45 | 61.2 |
| 3/8-24 | 23 | 31.3 | 35 | 47.6 | 50 | 68.0 |
| 7/16-14 | 30 | 40.8 | 50 | 68.0 | 70 | 95.2 |
| 7/16-20 | 35 | 47.6 | 55 | 74.8 | 80 | 108.8 |
| 1/2-13 | 50 | 68.0 | 75 | 102.0 | 110 | 149.6 |
| 1/2-20 | 55 | 74.8 | 90 | 122.4 | 120 | 163.2 |
| 9/16-12 | 65 | 88.4 | 110 | 149.6 | 150 | 204.0 |
| 9/16-18 | 75 | 102.0 | 120 | 163.2 | 170 | 231.2 |
| 5/8-11 | 90 | 122.4 | 150 | 204.0 | 220 | 299.2 |
| 5/8-18 | 100 | 136 | 180 | 244.8 | 240 | 326.4 |
| 3/4-10 | 160 | 217.6 | 260 | 353.6 | 386 | 525.0 |
| 3/4-16 | 180 | 244.8 | 300 | 408.0 | 420 | 571.2 |
| 7/8-9 | 140 | 190.4 | 400 | 544.0 | 600 | 816.0 |
| 7/8-14 | 155 | 210.8 | 440 | 598.4 | 660 | 897.6 |
| 1-8 | 220 | 299.2 | 580 | 788.8 | 900 | 1,244.0 |
| 1-12 | 240 | 326.4 | 640 | 870.4 | 1,000 | 1,360.0 |

The guides and ruler furnished below are designed to help you select the appropriate hardware.



Nut, M8

Thread Diameter (mm)

Inside Diameter (in) Threads per inch

Nut, 1/2-16



Screw, M8- 1.25 x 25

Thread Diameter (mm) Distance between threads (mm) Body Length (mm)

Body Diameter Threads per inch Body Length (in)

Screw, 1/2- 16 x 2



Standard Hardware Sizing

When a washer or nut is identified as 1/2" (M8), this is the *Nominal size*, meaning the *inside diameter* is 1/2 inch (8mm metric thread diameter); if a second number is present it represents the *threads per inch* (distance between threads).

When bolt or capscrew is identified as 1/2 - 16 x 2" (M8 - 1.25 x 50), this means the *Nominal size*, or body diameter is 1/2 inch (8mm metric thread diameter), the second number, 16, represents the *threads per inch*, (*distance between threads*). The final number is the body length of the bolt or screw, 2 inches (50mm).

NOTES

- These torque values are to be used for all hardware excluding: locknuts, self-tapping screws, thread forming screws, sheet metal screws and socket head setscrews.
- Recommended seating torque values for locknuts:
 - for prevailing torque locknuts - use 65% of grade 5 torques.
 - for flange whizlock nuts and screws - use 135% of grade 5 torques.
- Unless otherwise noted on assembly drawings, all torque values must meet this specification.

Common Hardware Types

Hex Head Capscrew



Washer



Carriage Bolt



Hex Nut

Wrench & Fastener Size Guide

| | | | | |
|----------------------------------|----------------------------------|----------------------------------|--|---------------------------------|
| | | | | |
| 1/4" Bolt or Nut Wrench—7/16" | 5/16" Bolt or Nut Wrench—1/2" | 3/8" Bolt or Nut Wrench—9/16" | 7/16" Bolt or Nut Wrench (Bolt)—5/8" Wrench (Nut)—11/16" | 1/2" Bolt or Nut Wrench—3/4" |
| M6 Bolt or Nut Wrench—10mm | M8 Bolt or Nut Wrench—13mm | M10 Bolt or Nut Wrench—17mm | M12 Bolt or Nut Wrench—19mm | M14 Bolt or Nut Wrench—22mm |

MURRAY®