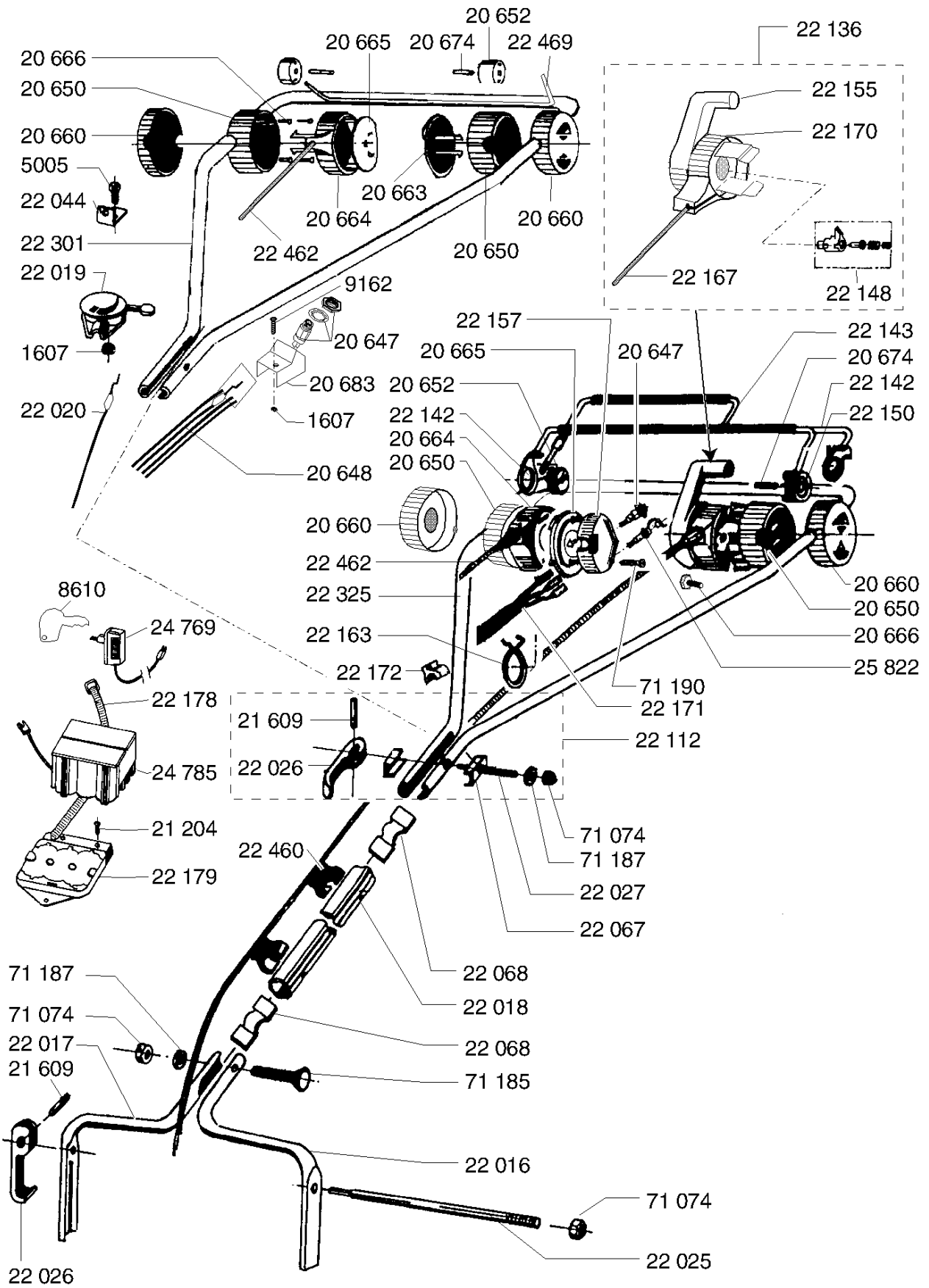
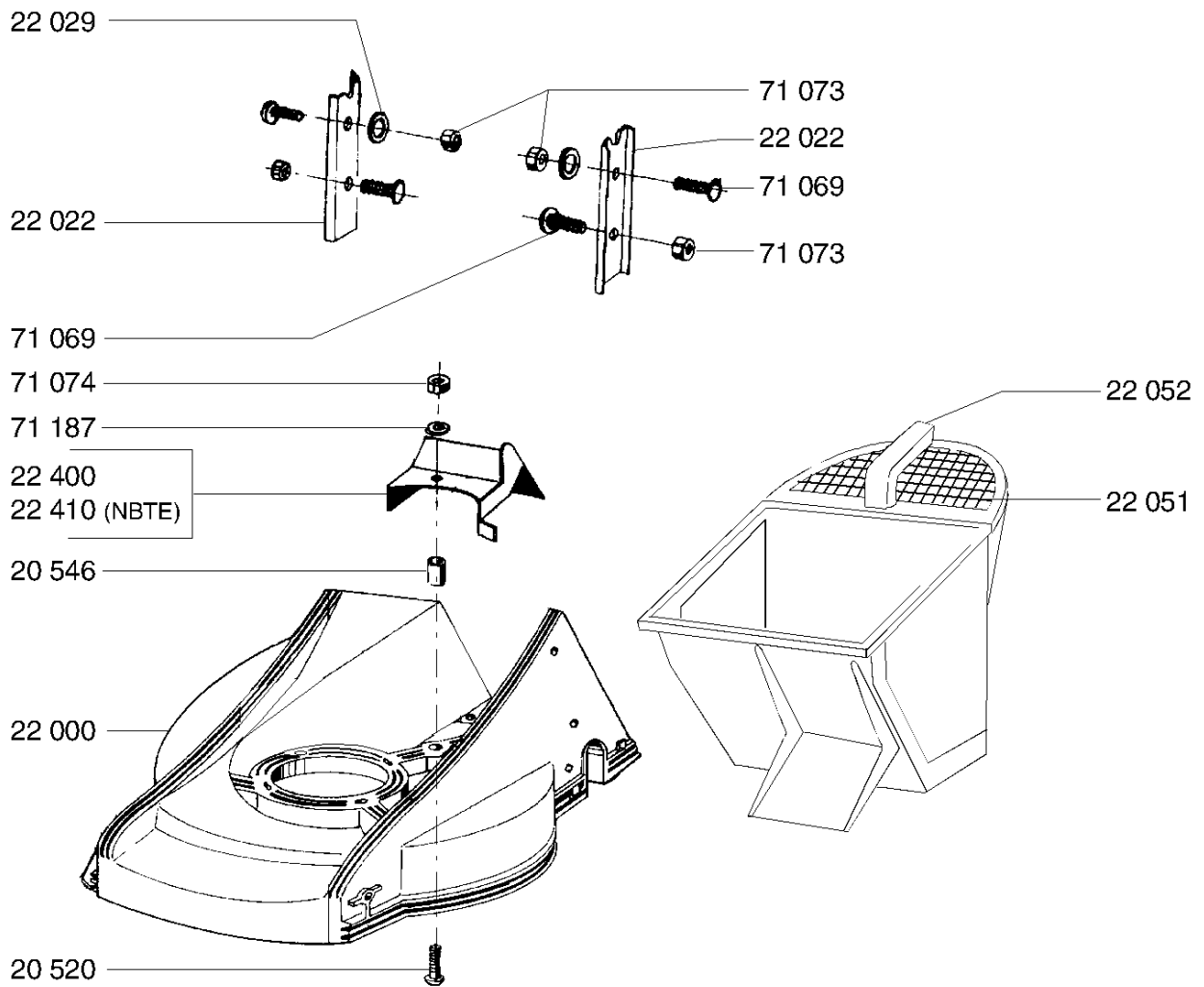
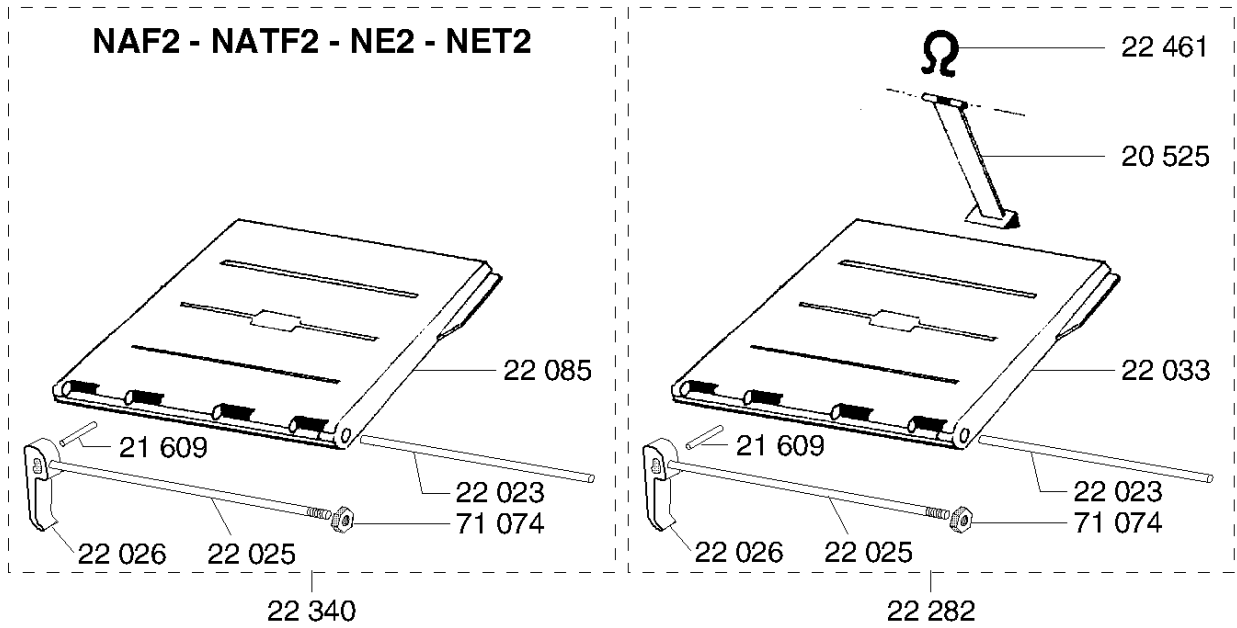


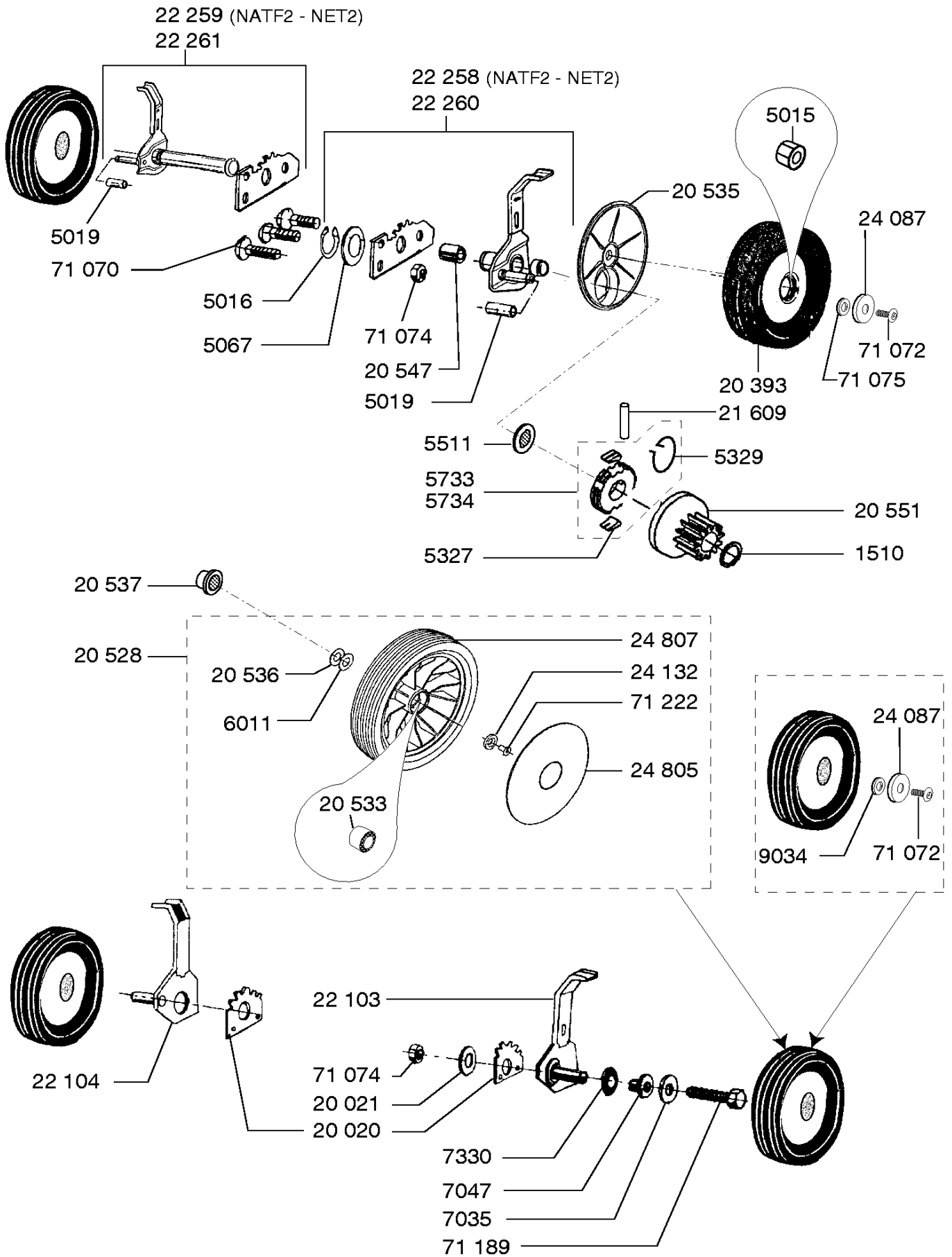
NBTE



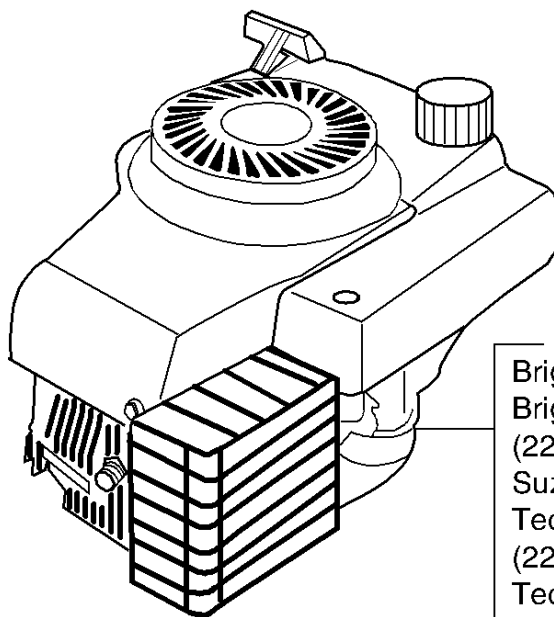
NA - NAF - NAF2 - NAT - NATF2 - NATF - NB - NBT - NBTE - NC - NDT -
NE - NE2 - NET - NET2 - NV - NVT



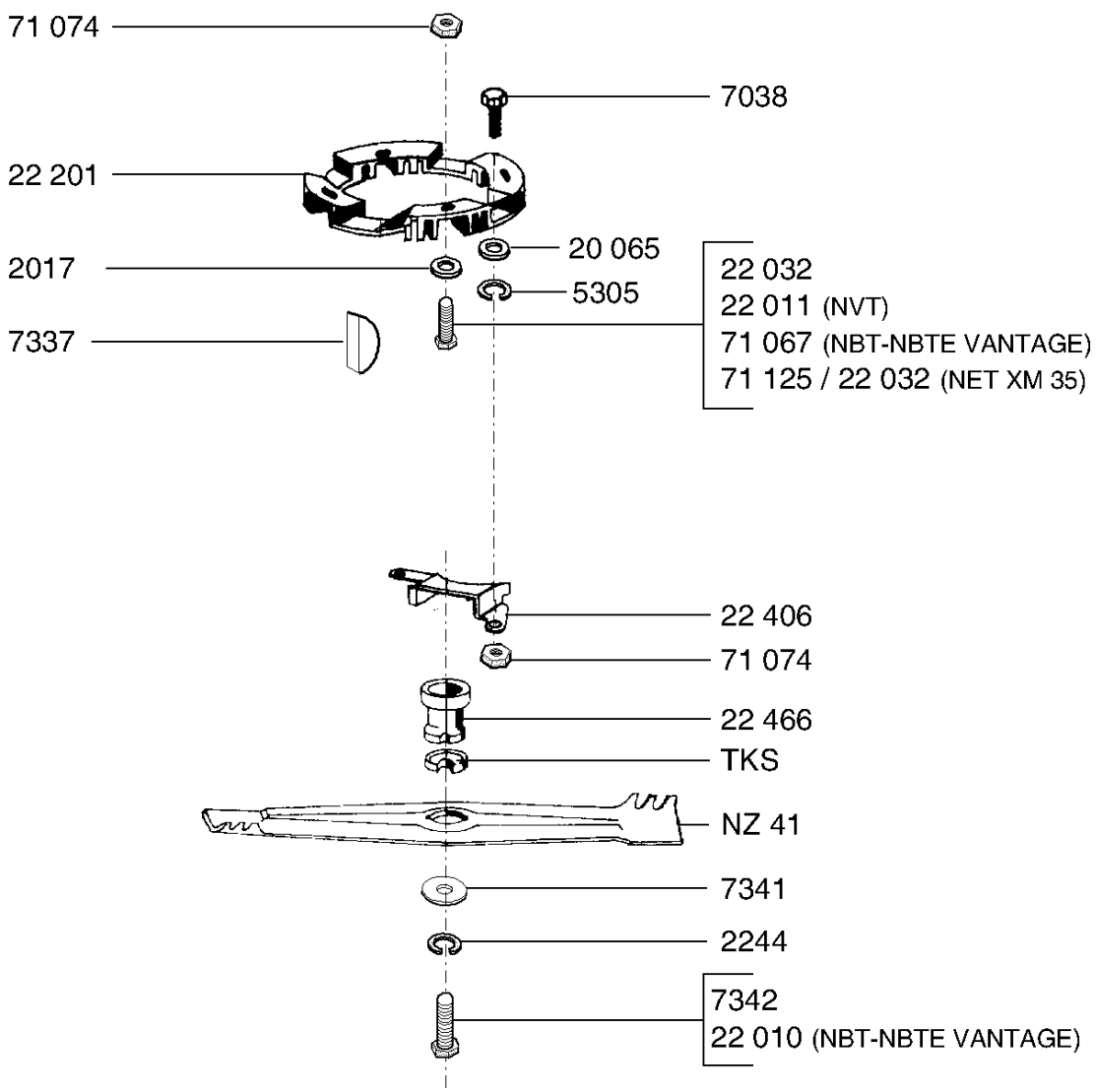
NAT - NATF - NATF2 - NBT - NBTE - NDT - NET - NET2 - NVT



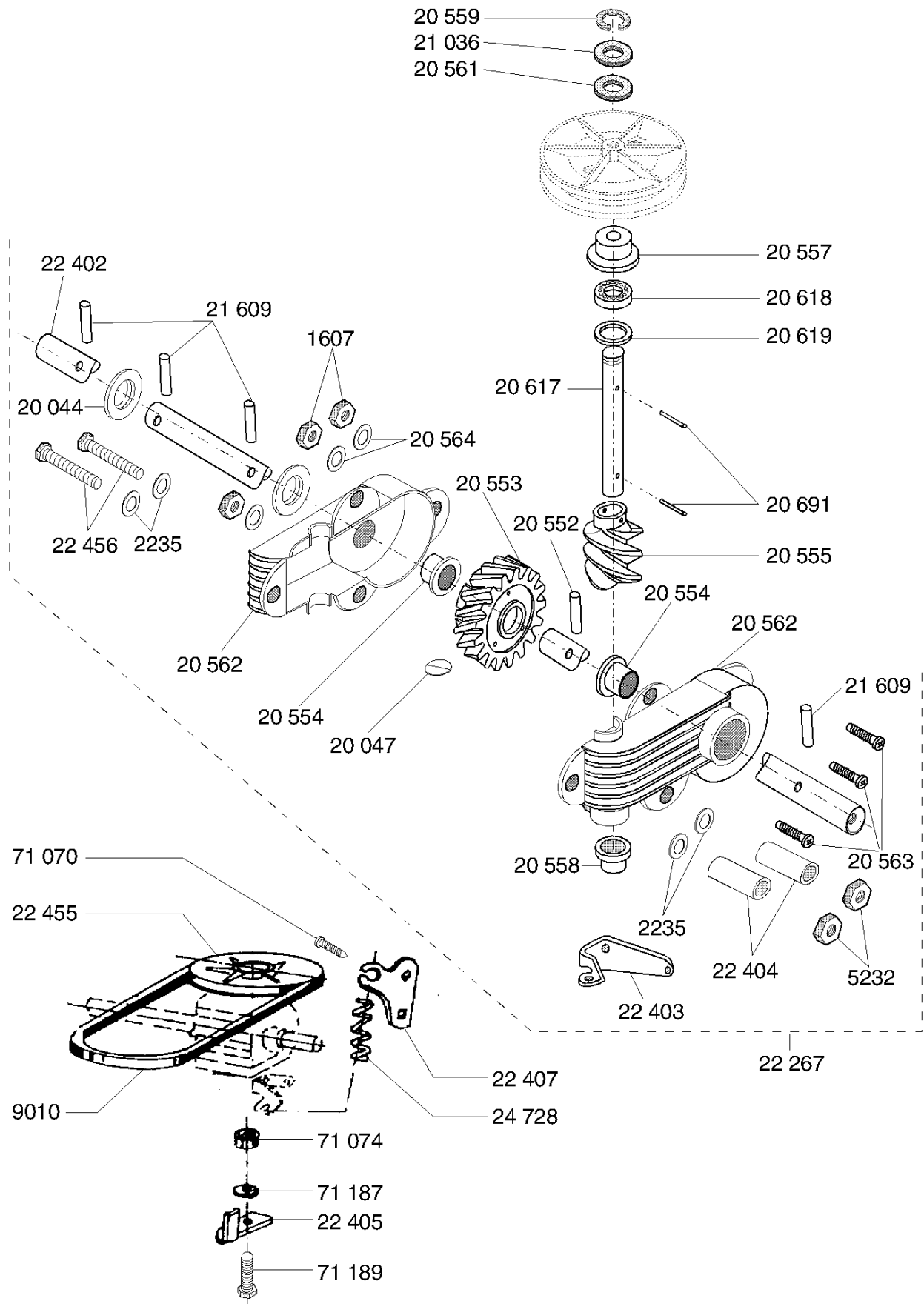
NBT - NBTE - NDT - NET - NET2 - NVT



Briggs & Stratton XM35 (NDT)
 Briggs & Stratton Sprint 375
 (22 475 / NET - NET 2)
 Suzuki 121MX (23 859 / NVT)
 Tecumseh prisma 37L
 (22 007 / NBT)
 Tecumseh prisma 37ES
 (22 474 / NBTE)



NBT - NBTE - NDT - NET - NVT - NAT - NAFT



NA - NAF - NAF2 - NAT - NATF2 - NATF - NB - NBT - NBTE - NC - NDT -
NE - NE2 - NET - NET2 - NV - NVT

